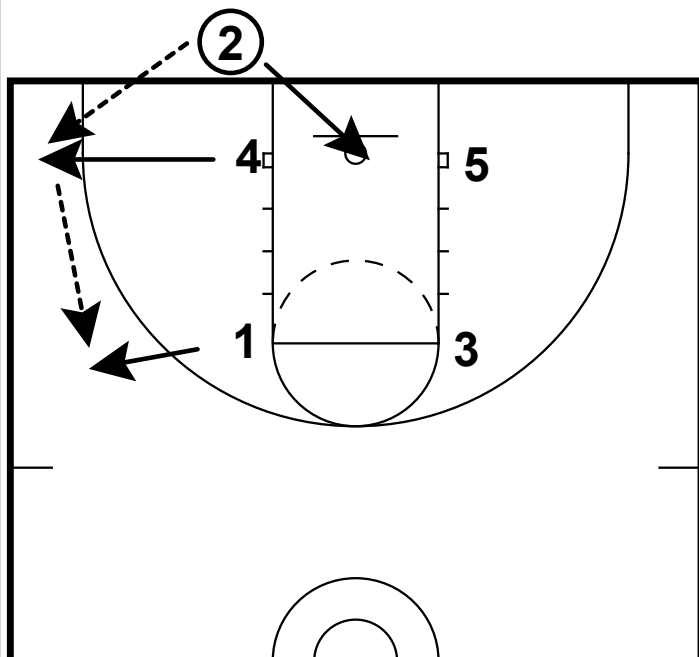
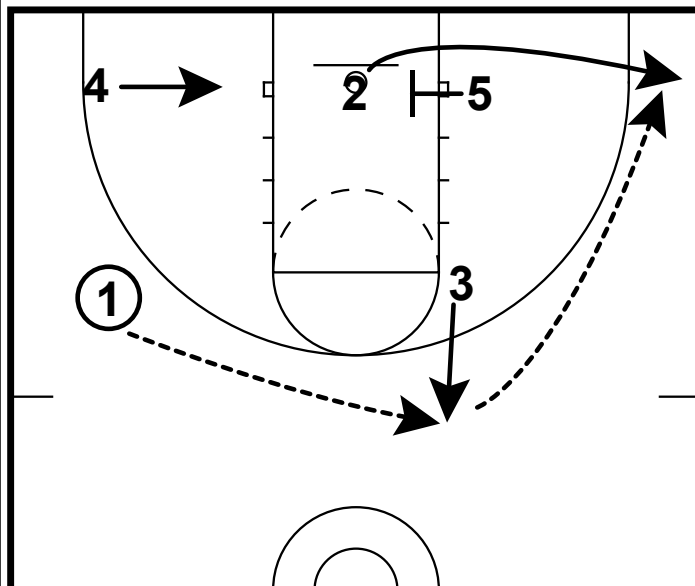


BOB: '2' AWAY



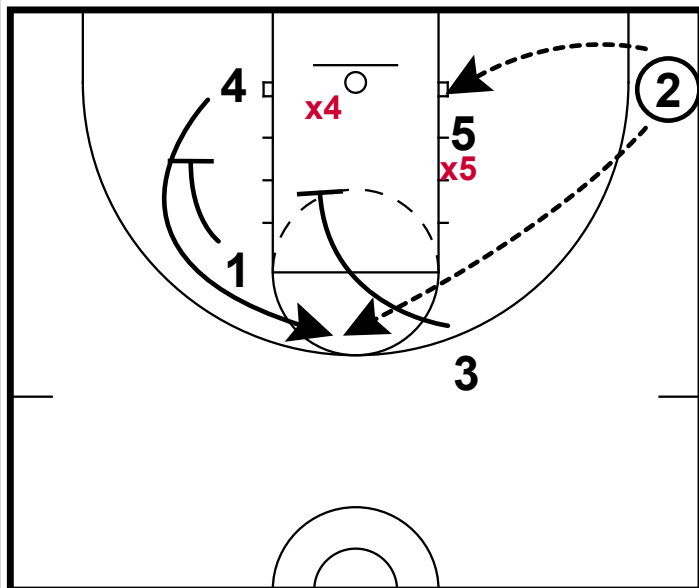
- 1) This is a good counter to the BOB we drew up called '2' because now we can go the opposite way.
- 2) We line up in a box set and throw the ball in - 2 will put his/her head under the rim.

BOB: '2' AWAY



- 1) Now instead of running off of a screen from 4, 5 will pin 2 under the rim.
- 2) 2 Should have an open look from the arc.

BOB: '2' AWAY



- 1) A few options out of this set in case does not get a look at the arc. 2 can feed the post, especially if **x5** is playing on the high side.
- 2) A second look that you can consider is setting a double screen for 4 away from the ball. This is especially effective if **x4** is over helping on 5.