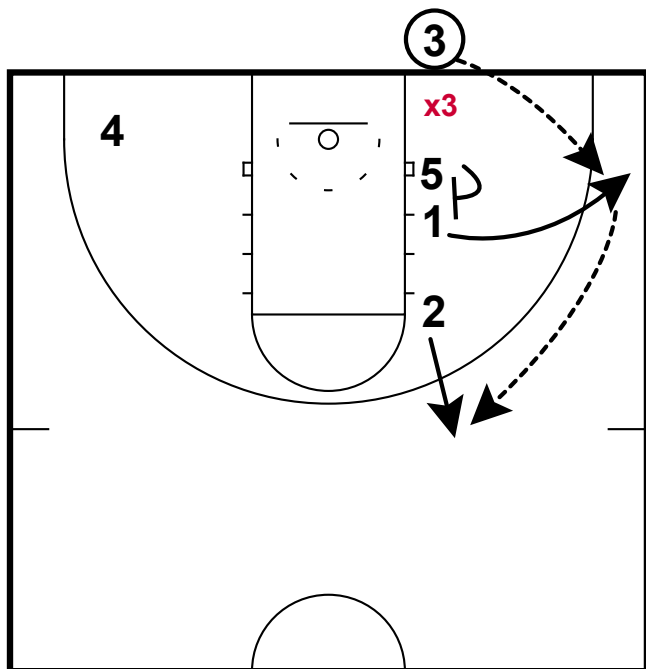
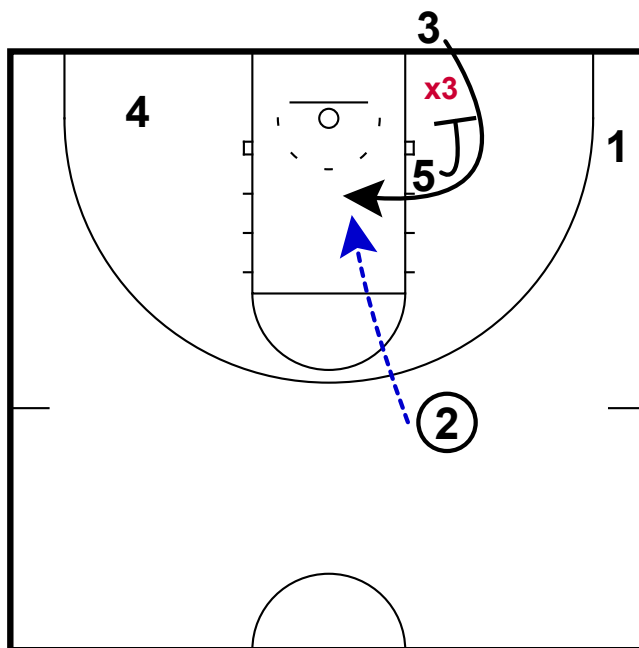


BOB: INBOUNDER PIN-IN



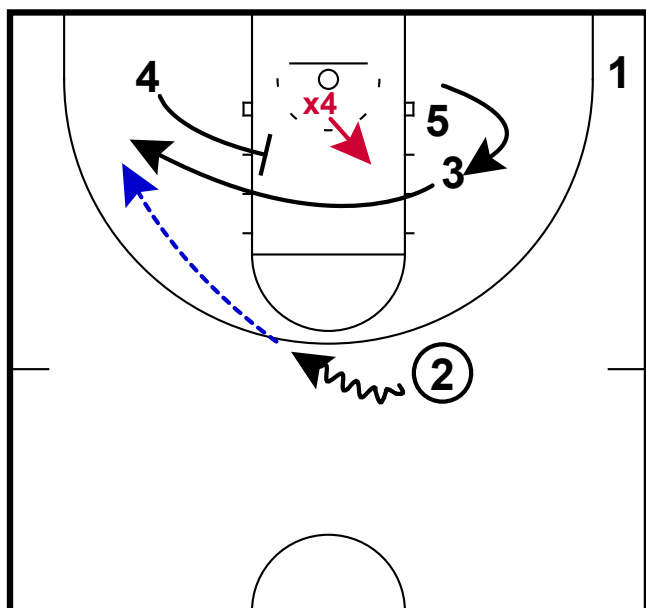
- 1) This is a common set that many teams use this day to get a quick bucket on a BOB situation.
- 2) Most likely putting your best play-maker and finisher in the inbounder position is the best option.
- 3) Also, this is most effective when the defense puts their defender on the ball to defend.

BOB: INBOUNDER PIN-IN



- 1) Once the inbounder has thrown the ball in, the post player should look to turn and pin in **x3** and free up 3 for a shot in the middle of the lane.
- 2) **Coaching Point:** 3 Will need to execute a curl cut. It always smart to practice the shots you want to execute in practice. Using breakdown drills replicating this is essential.

BOB: INBOUNDER PIN-IN



- 1) A counter to this play can be found here in frame 3.
- 2) The defense could begin to take away this BOB by bringing **x4** over in the middle of the lane to take away the curl cut.
- 3) An additional screen to set here would be to set this "quick" screen for 3. If he/she is your best playmaker, this is a great time for them catch, turn and score.