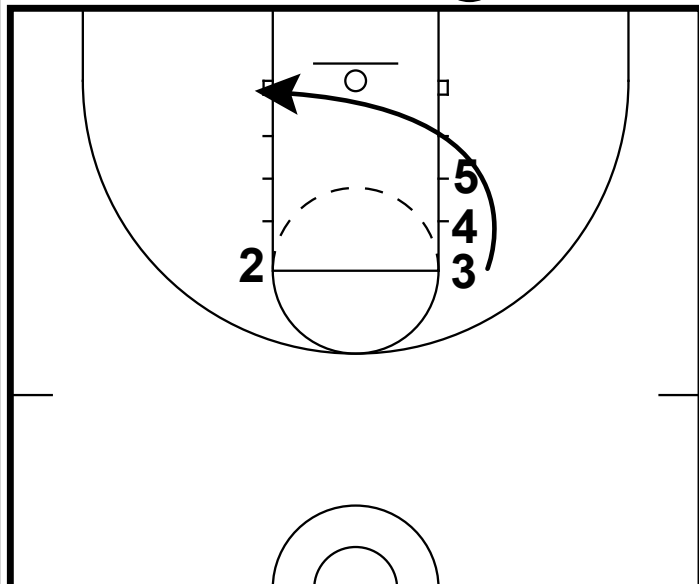


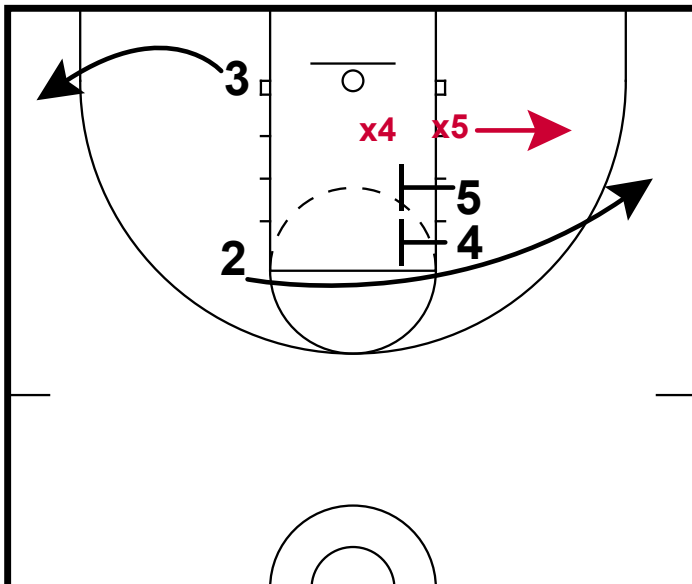
BOB: KENTUCKY

①



BOB: KENTUCKY

①

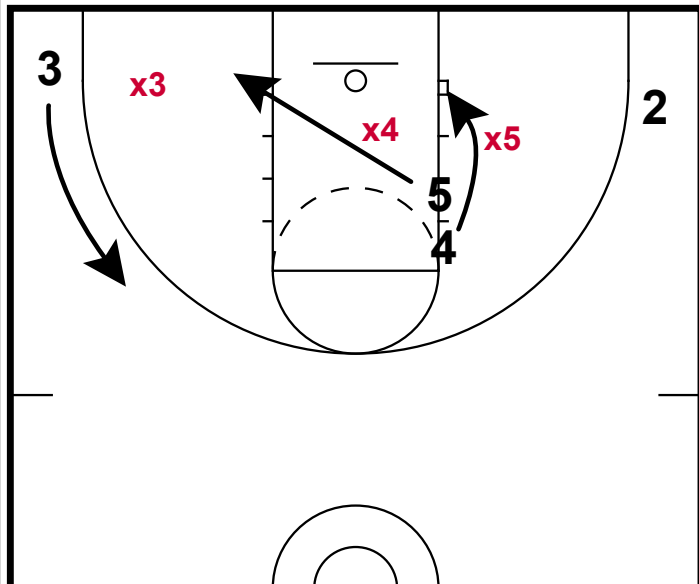


- 1) This is a BOB that we have used over the years that we adapted from the UK program years ago.
- 2) We line our 2 post players in the front of the line with our best finisher at the back of the line. He will rub off of the two post players and clear to the opposite side.
- 3) We put our best shooter on the opposite elbow.

- 1) 5 & 4 then set a double screen for our shooter who clears to the ballside corner.
- 2) 3 is spacing to the corner to stretch his defender away from the paint.
- 3) What we really want to have happen is for **x5** & **x4** to extend on this screen. Even if **x4** zones up the play in the lane, this will create confusion in the next frame.

BOB: KENTUCKY

①



- 1) If **x5** has over extended, this opens the door for 5 to sprint to the opposite block. **x4** & **x5** will have to communicate on the switch if they want to cover it.
- 2) With coming right to the ball he should have inside position on **x5** & should have a clean look at the bucket.
- 3) This play is even more effective if the defense puts a defender on the ball.