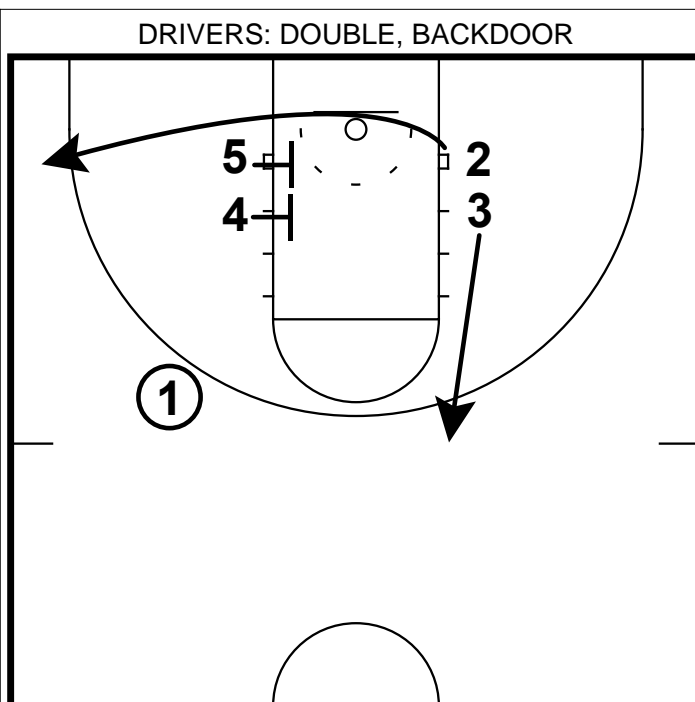
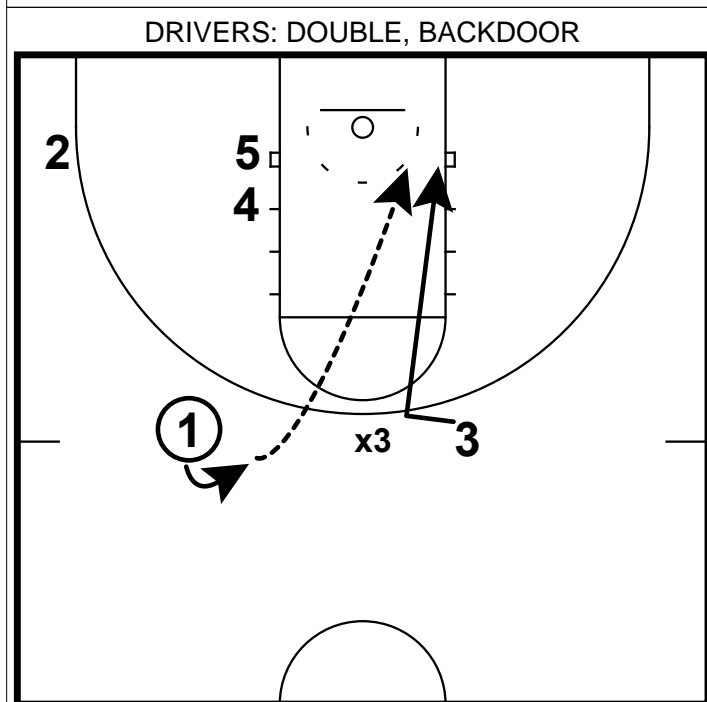


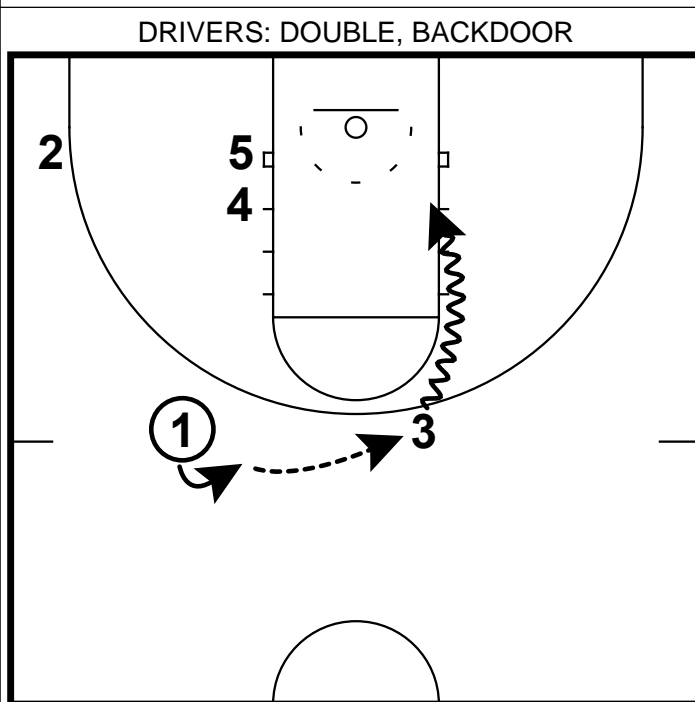
- 1) This is a set where we are looking to isolate our best driver on one side of the floor.
- 2) In this set, we double stack with our posts on one side and our guards away from the ball.



- 1) With the ball away from the wings, we run our best shooter to the corner off of a double screen. This should be a diversionary tactic.
- 2) In actuality we are looking for our slasher sprinting to the top of the key.



- 1) Our play-maker may be the type of player to draw a lot of attention, so being over-denied is quite the possibility.
- 2) This is a great time for a back door cut. His/her athleticism will allow to finish around the rim consistently.



- 1) If the defense does not bite on the back door cut, our slasher still has an entire side cleared out for him/her.
- 2) This becomes a great "iso" situation where he/she can do what they do best - score off the dribble.