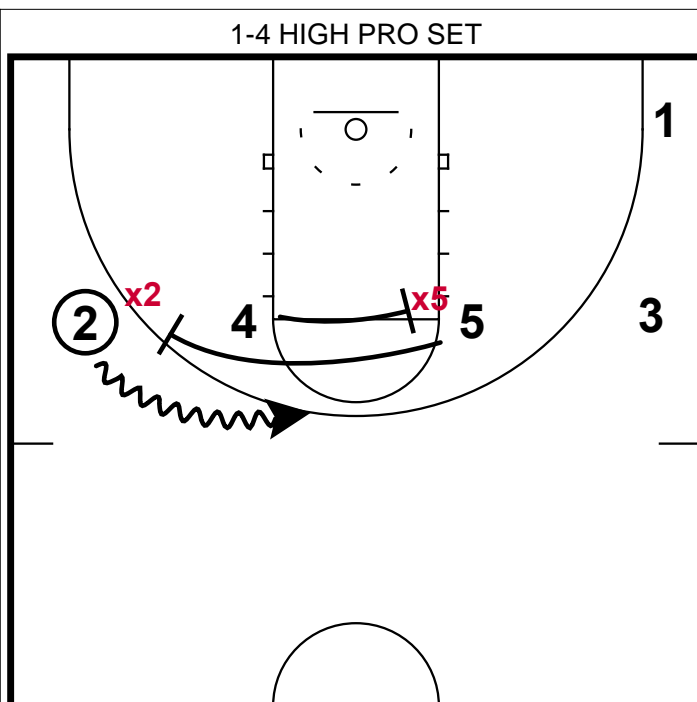
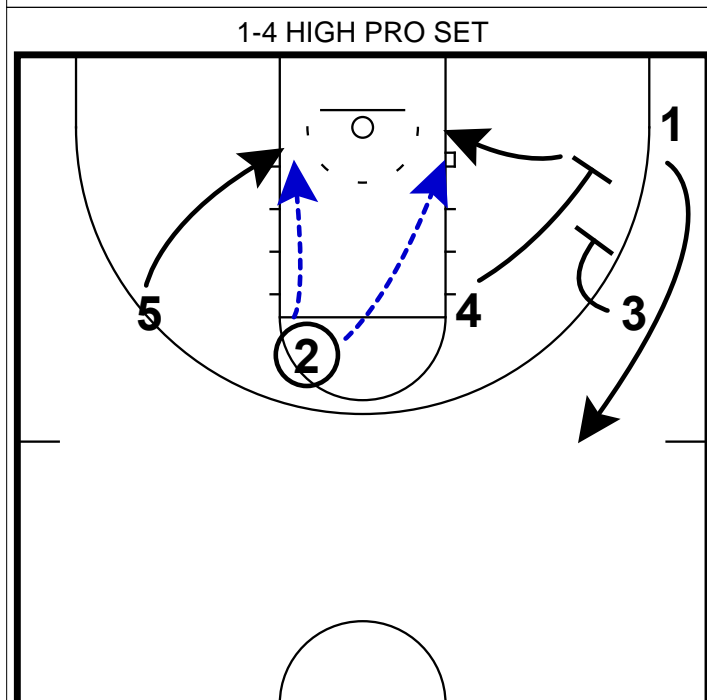


- 1) 1-4 High set with the 2 posts at the elbows.
- 2) Once the pg enters the ball to a wing, he/she will clear to the opposite corner.



- 1) Now the ballside post goes and screens for 5 at the opposite elbow.
- 2) 5 will go and set a ball screen for the wing.
- 3) **Coaching Point:** The purpose of the cross screen is to prevent the defense from jumping the ball screen and trapping the ball handler.



- 1) Now with 2 in the middle of the floor, he/she can make a play for him/herself or look for a rolling 5 to the rim.
- 2) 4 and 3 will set a double away for 1 in the corner.