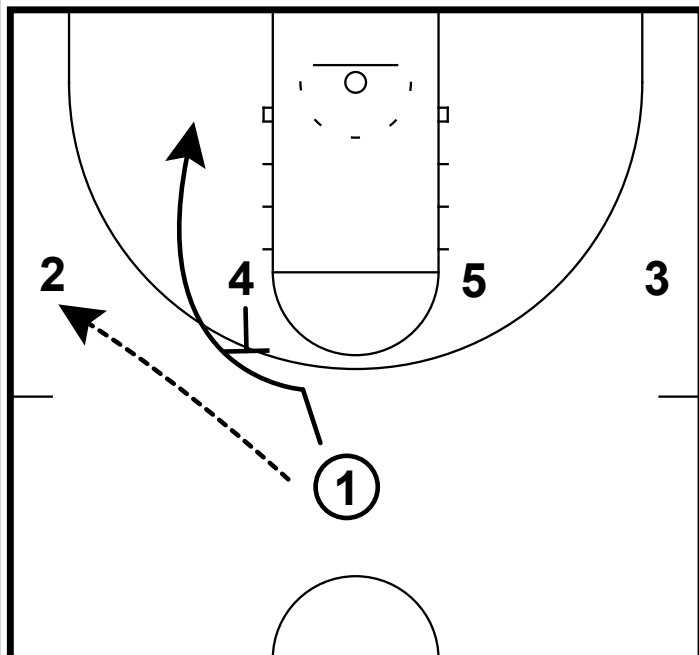
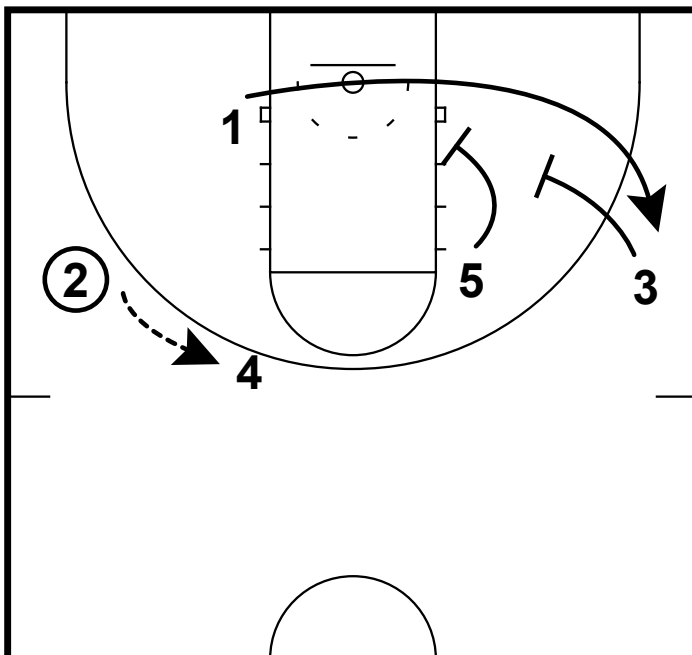


BROOKLYN NETS: UCLA DOUBLE



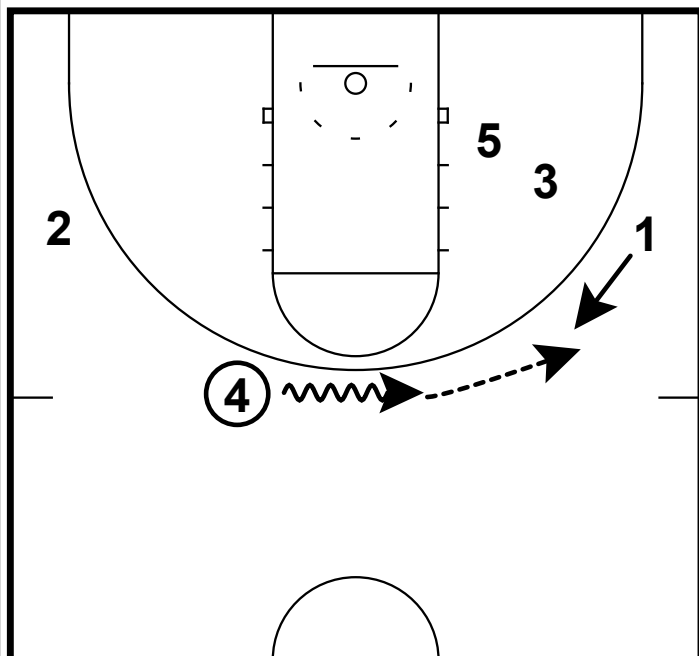
- 1) This is a set to get your best play maker the ball on the move, while at the same time setting multiple screens for him.
- 2) The ball is entered to the wing and then immediately get a UCLA screen for the point guard.

BROOKLYN NETS: UCLA DOUBLE



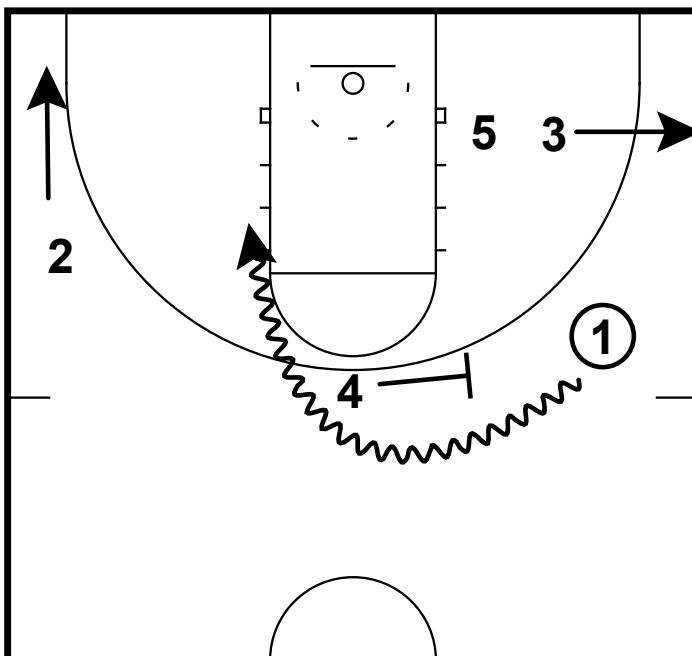
- 1) The wing then reverses the ball back to 4 on the pop out.
- 2) 1 will get a double screen along the baseline.

BROOKLYN NETS: UCLA DOUBLE



- 1) 4 will take a dribble towards 1 and delivers a pass to him on the move.

BROOKLYN NETS: UCLA DOUBLE



- 1) 2 and 3 need to space to the corners
- 2) 4 sets a ball screen on 1 who will turn the corner and look to make a play at the FT line.