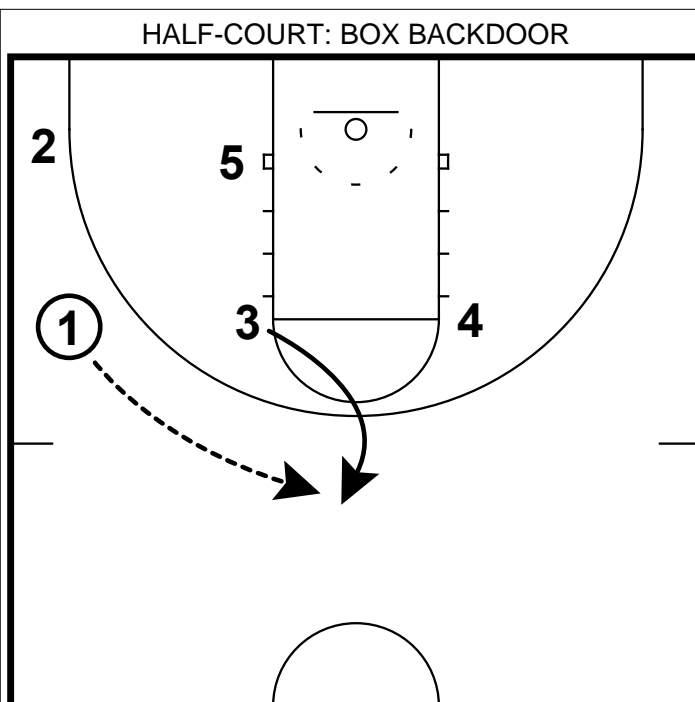
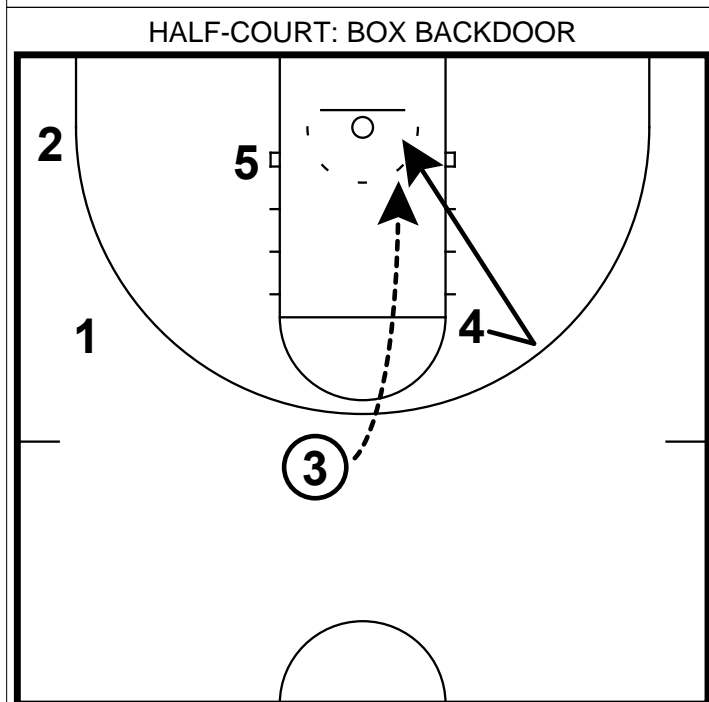


- 1) This is a box set designed to get a backdoor cut on the backside.
- 2) Here we start with baseline pin in screen for our best shooter by our post player.



- 1) Our point guard has dribbled to the side where the screening action has occurred.
- 2) Once to the wing, the nearside wing pops out the top of the key to receive the reversal pass.



- 1) Now with 3 at the top of the key with the ball, 4 takes a step out as if to receive another reversal pass. However, we are trying to get the defender to get caught leaning so we can throw the backdoor pass.
- 2) **Coaching Point:** To eliminate confusion on backdoor cuts, the cutter should show the fist to signal to the ball handler that the backdoor cut is predetermined.