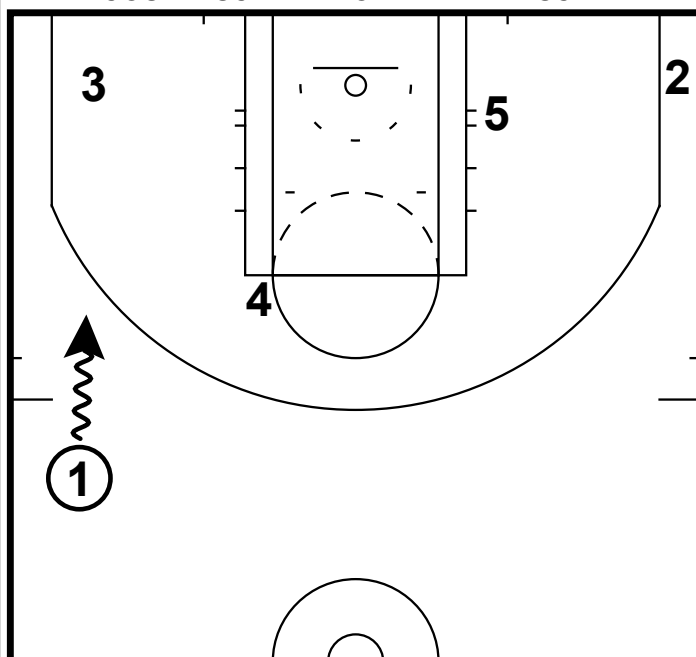
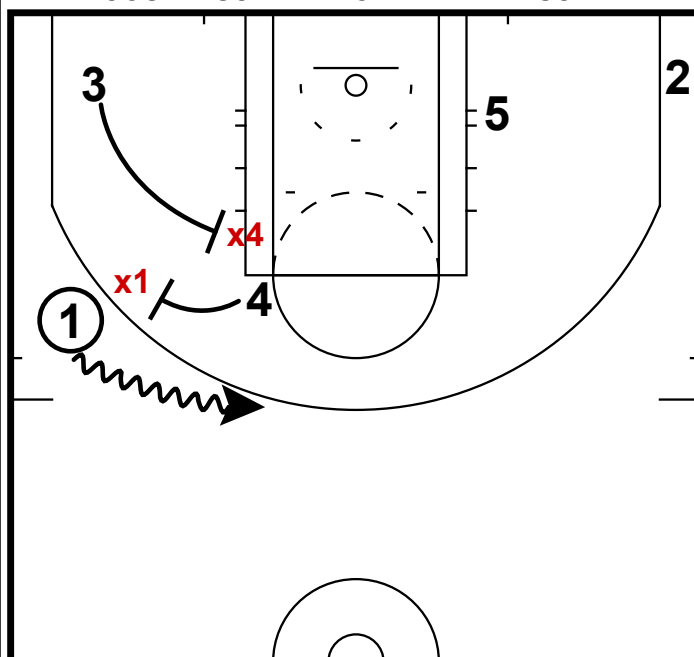


## HALF COURT: SCREEN FOR THE BALL SCREENER



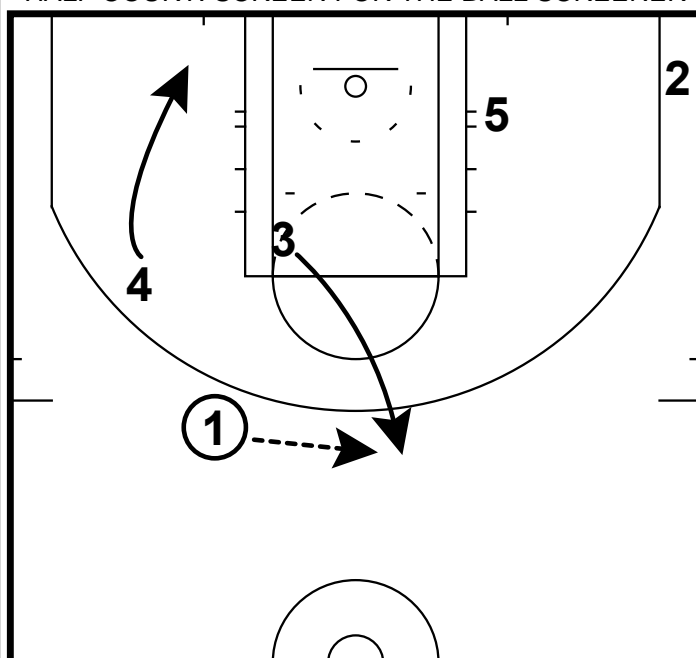
- 1) The Cleveland Cavaliers ran this set the other night with Kyree Irving at the point guard position.
- 2) One of the big things that NBA teams do these days is to screen for the ball screener, to prevent a hard hedge or trap.
- 3) In this set we see multiple ball screens that are set all with the culmination of Irving getting a ball reversal 3.

## HALF COURT: SCREEN FOR THE BALL SCREENER



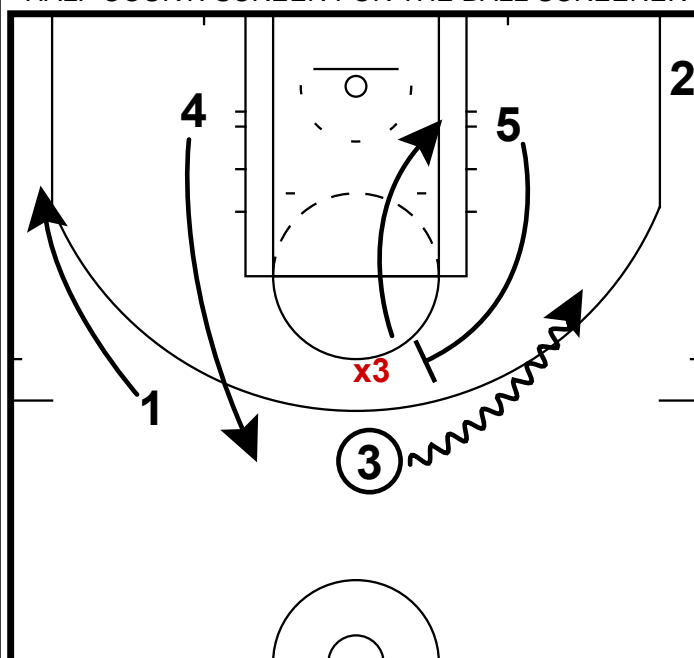
- 1) In this frame we see the initial action which starts with 3 setting a screen for 4.
- 2) Immediately 4 goes and sets a ball screen for the point guard.
- 3) This happens very quickly, so timing is important here.

## HALF COURT: SCREEN FOR THE BALL SCREENER



- 1) They did not really design this play for Irving to turn the corner, rather they have 3 make a 2nd cut to the perimeter so Irving could make a ball reversal.
- 2) This set could be adjusted so that the PG could turn the corner.

## HALF COURT: SCREEN FOR THE BALL SCREENER



- 1) Once 3 catches the ball at the top of the key, he receives an immediate ball screen from the opposite post.
- 2) Now this action turns into a typical high ball screen action where the post man rolls to the rim and the opposite post fills the high post.
- 3) **Coaching Point:** Notice how 1 slides down the arc. Spacing is important regardless of the action you are running. This will ensure in the next frame that 1 gets an open shot.

