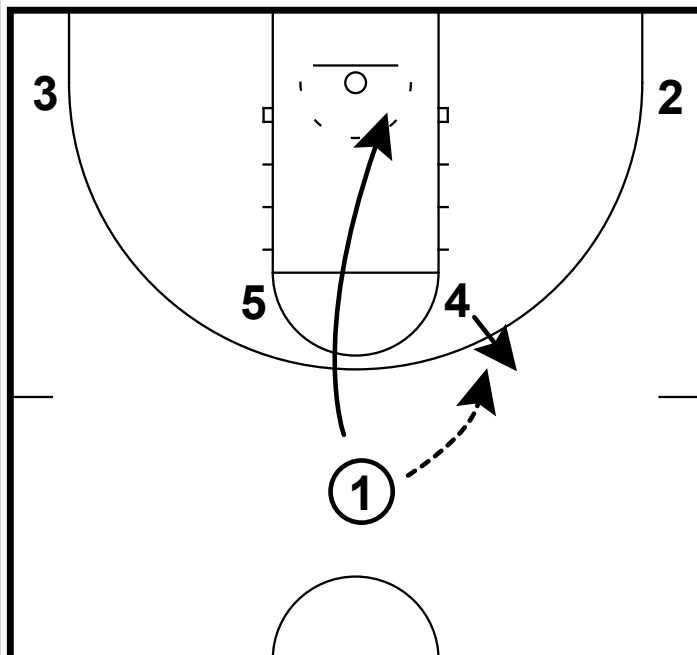
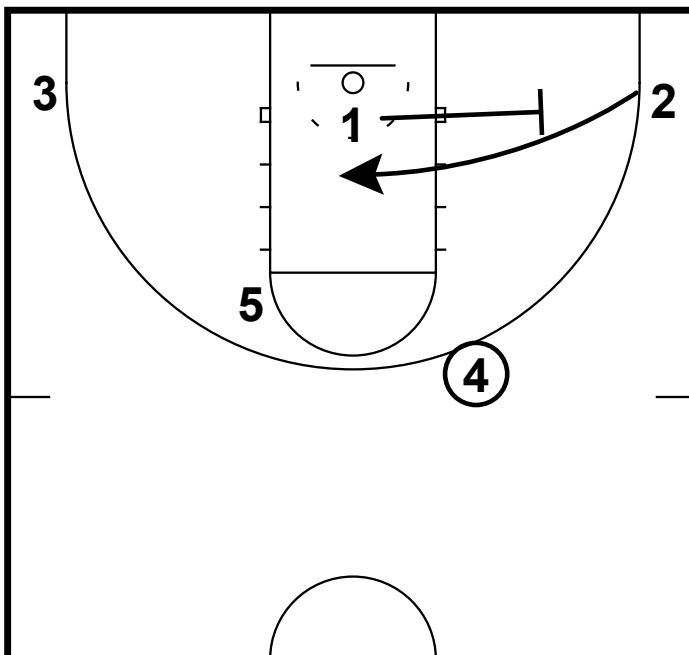


#01 KELSEY MITCHELL: HORNS/FLEX/HANDOFF



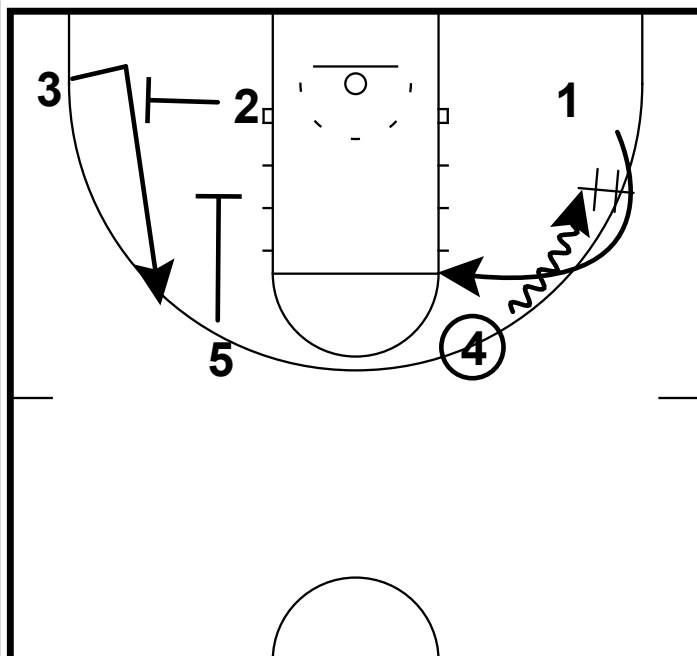
- 1) Mitchell is the most explosive scorer in the nation. Creating space for her and her athleticism is key to get her good shots.
- 2) In this set, as the pg she will bring the ball down and deliver the ball to a post at the arc - out of the horns set.
- 3) She will immediately make a basket cut, which puts extraordinary pressure on the defense. She is a threat to score off of this cut because of her strength.

#01 KELSEY MITCHELL: HORNS/FLEX/HANDOFF



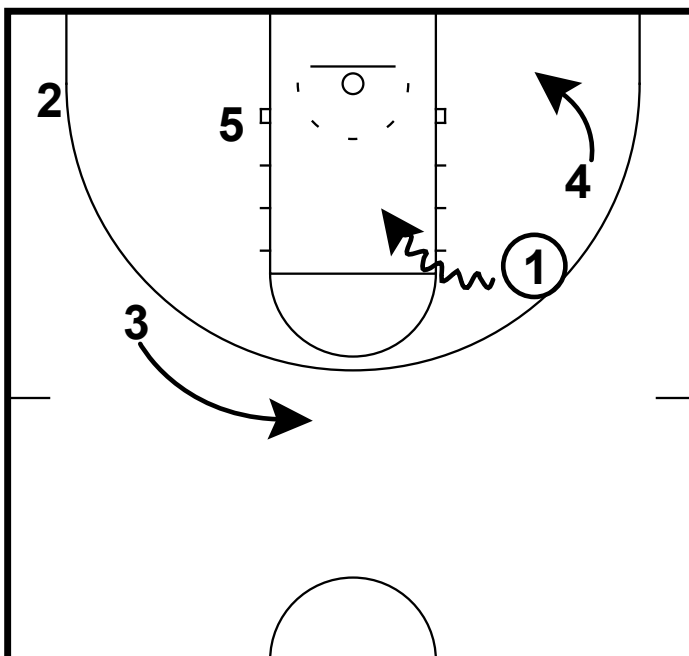
- 1) One thing that coaches do not do enough of with their best scorer is set screens - in this set, Mitchell can set a cross screen on the baseline for a perimeter player.
- 2) This creates pressure on the defense because it is hard to help off of Mitchell and switching may create mismatch.
- 3) Having a versatile post who can pass is preferable here. Another option is to invert your posts and guards in this set.

#01 KELSEY MITCHELL: HORNS/FLEX/HANDOFF



- 1) Once Mitchell sets the baseline, we have created a 2 man game look on this side of the floor.
- 2) Having the player drive the ball directly at Mitchell put the defense in a touch situation. Mitchell is quick & smart enough to back cut an over play from the defense. She's also strong enough to power through a physical defender.
- 3) Getting a dribble hand-off here while setting screens away from the ball opens the middle of the floor up.

#01 KELSEY MITCHELL: HORNS/FLEX/HANDOFF



- 1) With Mitchell on the right side she can attack with her left hand to score in the lane.
- 2) If the defense double teams her here, 4 slipping to the corner becomes very open.