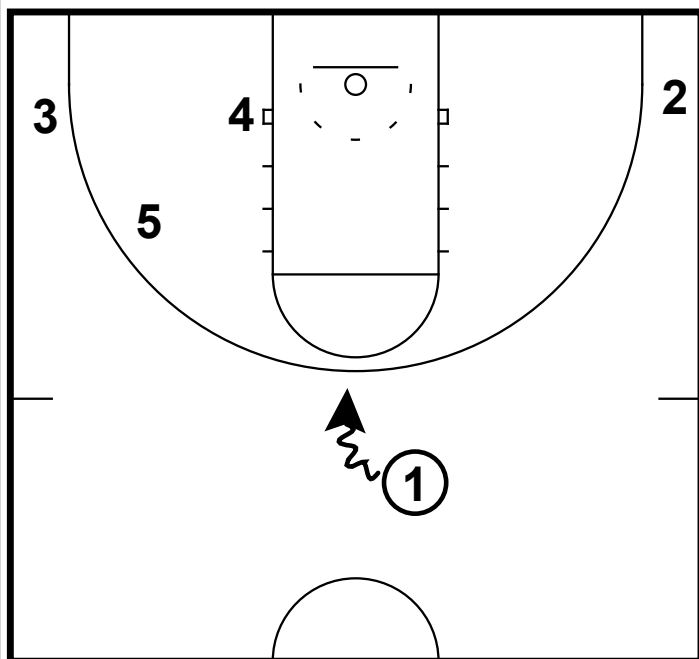
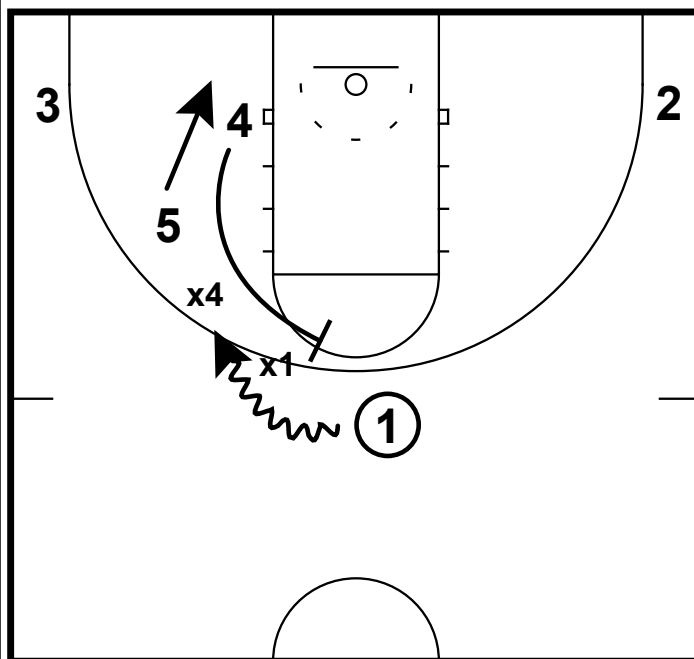


HALF-COURT SET: 1-4 LOW BALLSCREEN GOLDEN STATE



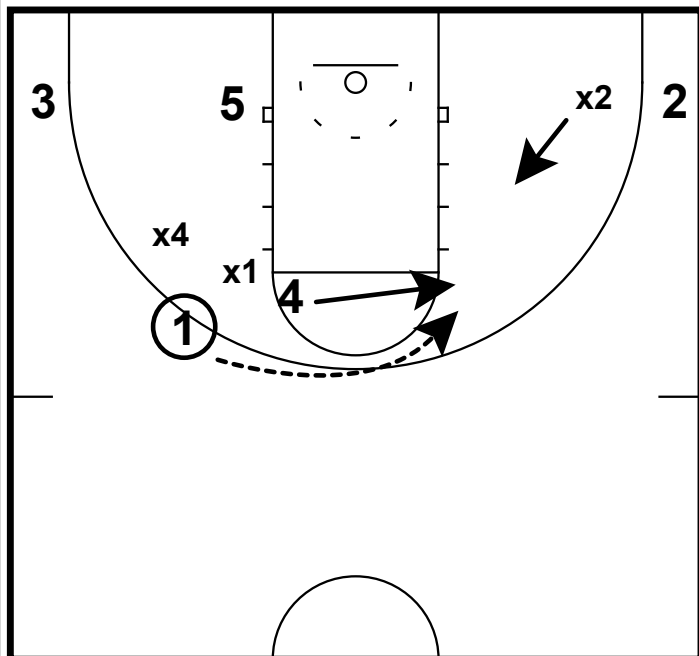
- 1) This is a short second look that Golden State showed at the end of the quarter.
- 2) In this setting they over loaded one side with a shooter on the weakside.

HALF-COURT SET: 1-4 LOW BALLSCREEN GOLDEN STATE



- 1) 4 runs up the FT lane to set a ball screen for 1 (who was Steph Curry in this situation).
- 2) Here 1 creates an over extension of help at the arc - almost a double team to contain Curry off the dribble.

HALF-COURT SET: 1-4 LOW BALLSCREEN GOLDEN STATE



- 1) With the hard hedge on 1, 4 is able to pick and pop to the elbow area opposite of the ball.
- 2) 4 was able to get an open jumper there.
- 3) All of this was set up by the fact x2 could not over help off of 2, because he was concerned about not leaving a good shooter open in the corner.