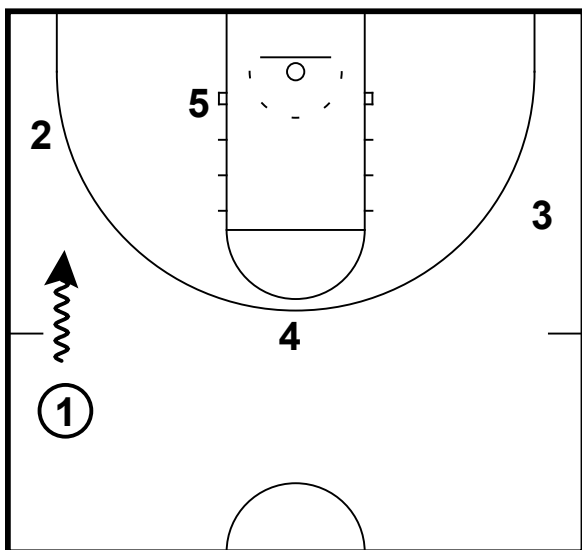
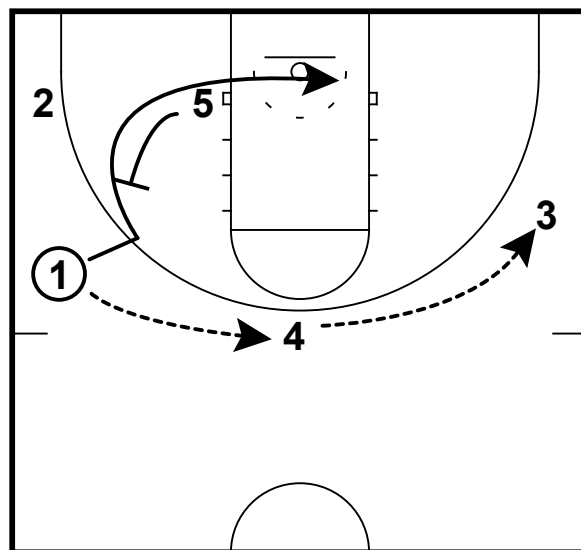


SECONDARY BREAK: BACKSCREEN/DOUBLE



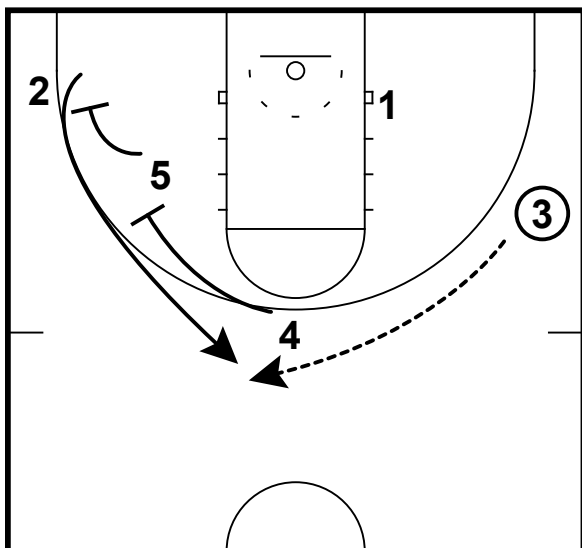
- 1) This is a normal secondary break alignment.
- 2) If the point guard can pitch ahead in transition, he/she should do so.

SECONDARY BREAK: BACKSCREEN/DOUBLE



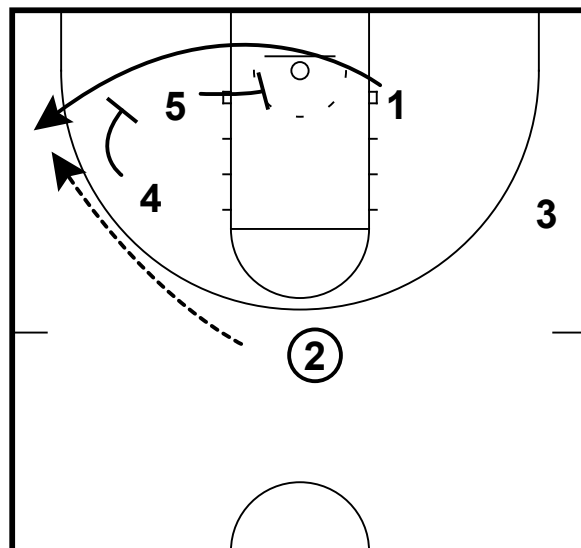
- 1) If no pitch ahead, then 1 will swing the ball to 4 at the top of the key and then reverse the ball to 3 on the opposite wing.
- 2) Once 1 swings the ball, the ball side post (5) will step out and set a back screen for 1 to run all the way through to opposite block.
- 3) **Teaching Point:** 1 needs to set up his/her defender. He/she can go off either shoulder from the post. but making a hard cut will make the scree/action that much more effective.

SECONDARY BREAK: BACKSCREEN/DOUBLE



- 1) With the ball on the opposite wing now, 4 and 5 will now set a double screen for 2 in the corner.
- 2) **Coaching Point:** Set these screens wide and deep if the defense begins to switch these screens. This will allow plenty of room for 2nd cuts and slips into the lane.

SECONDARY BREAK: BACKSCREEN/DOUBLE



- 1) With 2 at the top of the key with the ball in hand, 5 and 4 now set a second double screen for 1 along the baseline.
- 2) **Coaching Point:** These screens can be switched, but you must anticipate how to teach how to slip screen and where to throw the pass.