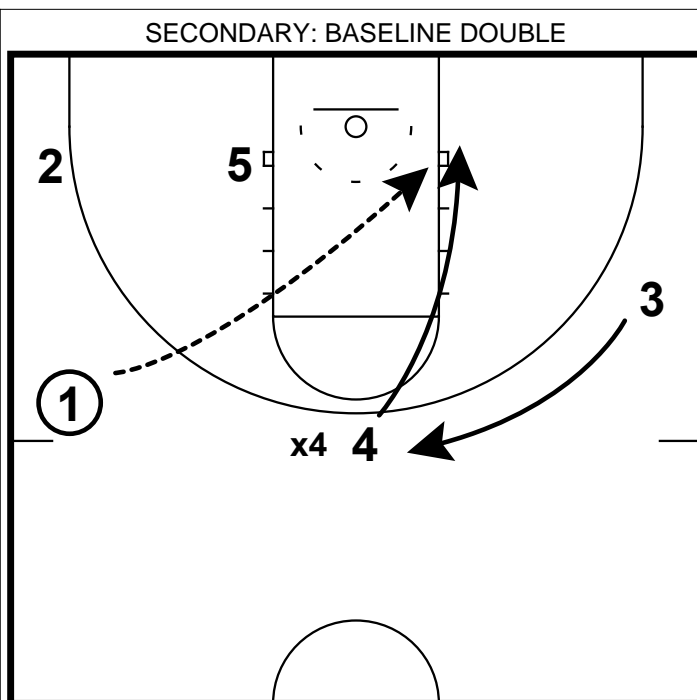
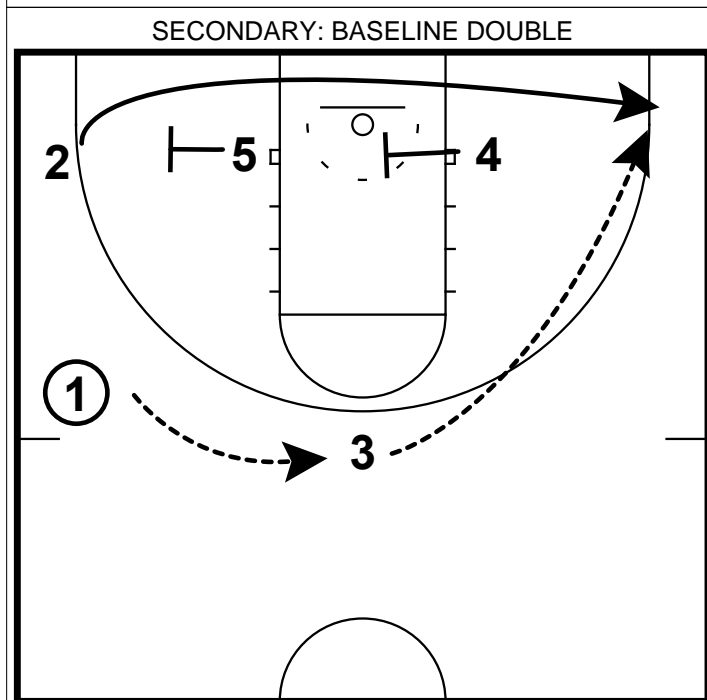


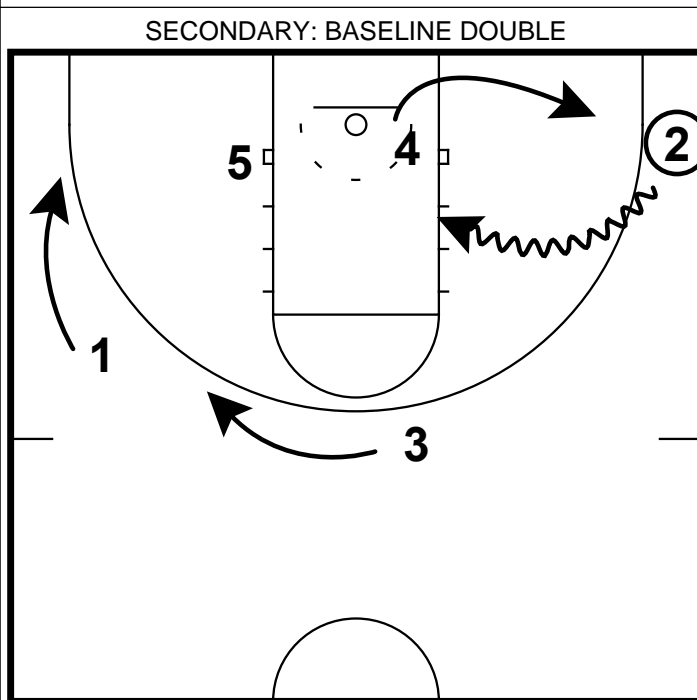
- 1) Here is a secondary break look.
- 2) In this scenario, a pitch ahead to the wing is not possible. So the point guard will dribble push the wing to the corner.



- 1) In a normal secondary break situation 1 would look to reverse the ball to 4. Here this can be a read or a predetermined call.
- 2) If 4 is overplayed, this a great opportunity for a back door cut. 3 should fill to the top of the key to occupy the help defense.
- 3) **Teaching Point:** 4 should show his/her fist to let the ball handler know that a backdoor cut is coming.



- 1) With both post players on the block and a guard in the corner, this a nice opportunity to get a baseline double screen.
- 2) 1 reverses the ball to 3 and quickly find 2 in the corner.
- 3) **Teaching Point:** If the defense scouts you and begins to switch the screen with 4, look for a slip and a quick cut to the bucket.



- 1) With 2 catching the ball in the corner, a jumper is a good look if on balance. However, the defense more than likely will be chasing baseline. So using your momentum to drive middle opens up nicely.
- 2) 4 should move off of the drive by stepping out to the short corner preparing for a jump shot.
- 3) **Teaching Point:** 1 and 3 should have eyes to find a gap in the defense and spot up if their defenders collapse.