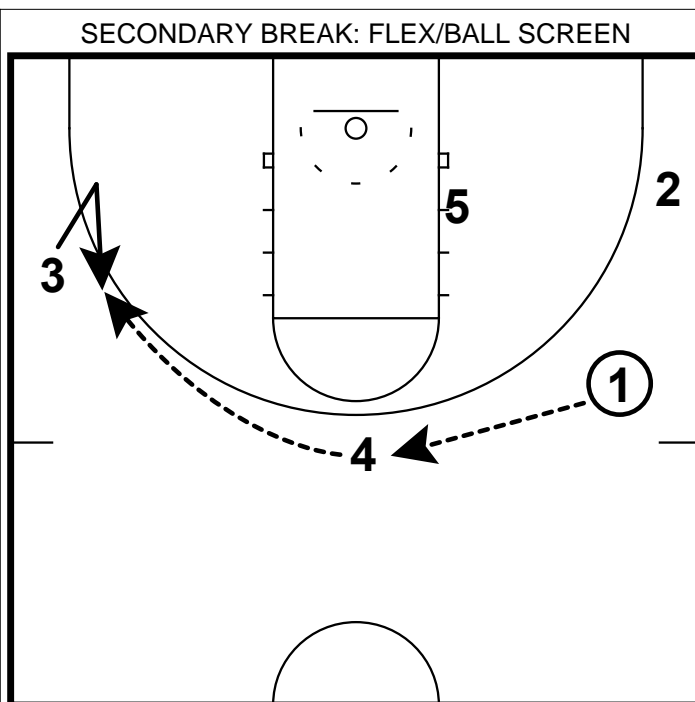
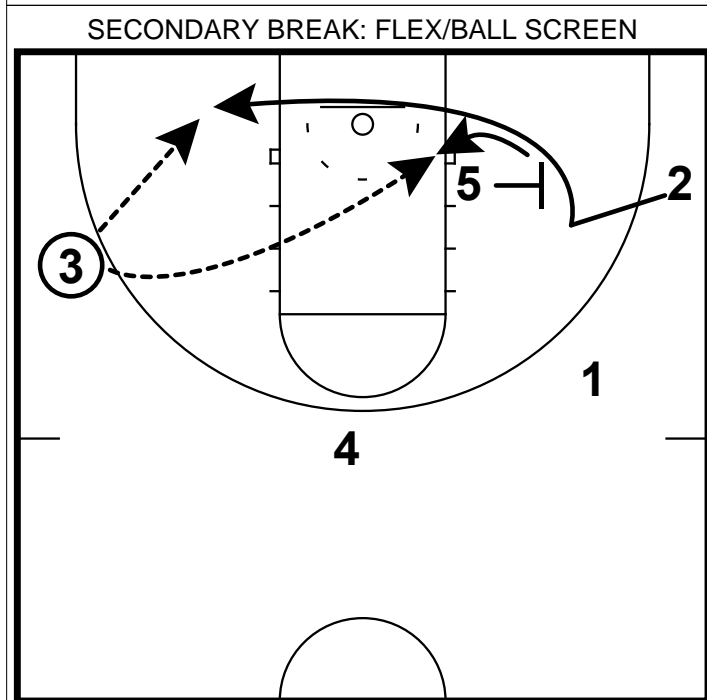


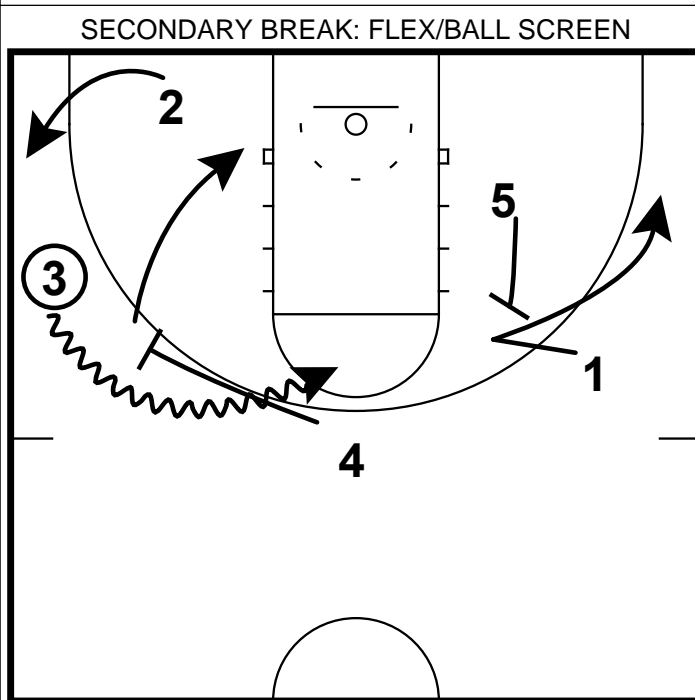
- 1) In this secondary, the lanes being ran by the players are the same as the UNC Secondary. Wings run wide. Posts run in the middle 1/3. The PG chooses a side.
- 2) In this scenario there will not be a pitch ahead pass, but the point guard will dribble enter the ball top of the key extended.



- 1) Ball is reversed to the trailing 4 player
- 2) Ball is then swung to 3 who has moved without the ball ready to receive the ball on the wing



- 1) With 3 on the wing, we now set a baseline flex screen for the opposite wing with the post on the block
- 2) The ball handler now has two options - hit the wing who is cutting baseline or to hit the post who is open because his/her defender has helped on the cut.



- 1) If the baseline flex screen does not produce a shot, then 4 will "chase" his pass and set a ball screen for 3 on the wing.
- 2) 2 in the short corner needs to space to the corner to make himself available for a "throwback" pass
- 3) 5 will take a step up the lane and set a flare screen for the point guard then step out to the line for pressure release
- 4) 3 can turn corner, hit the screen and roll or hit 5 if double teamed