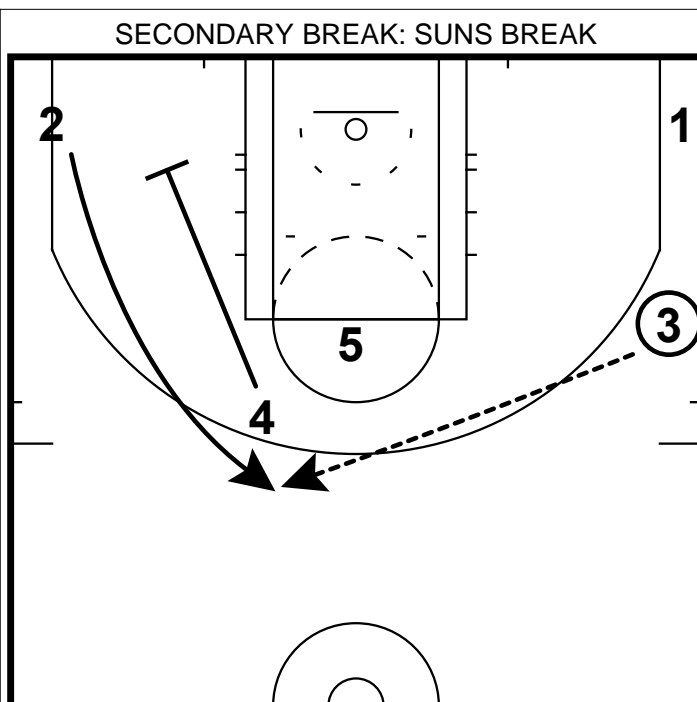
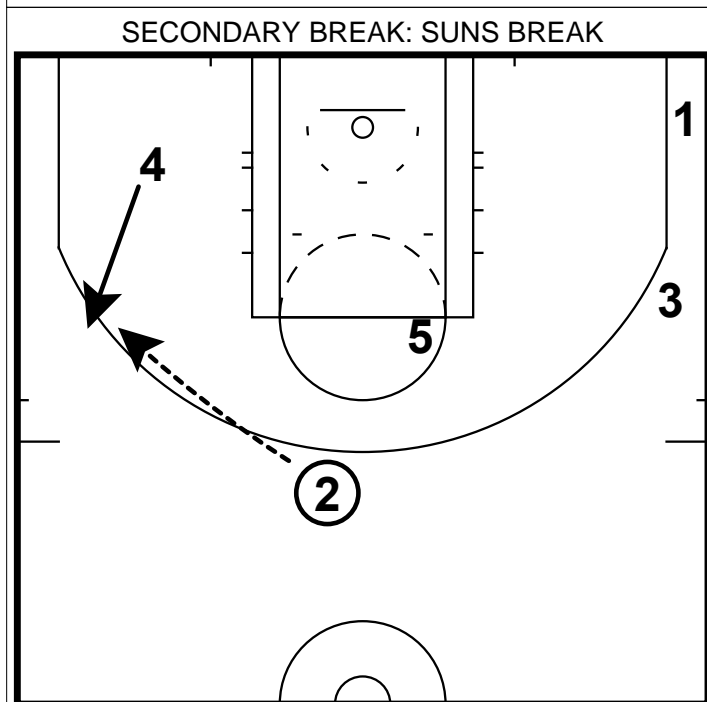


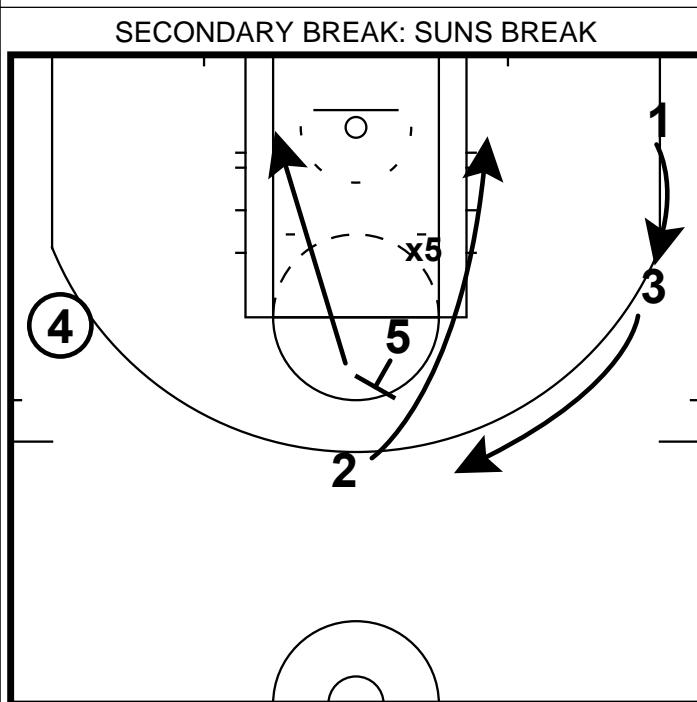
- 1) This is a break set picked up from the PHX Suns in the 2012-2013 season.
- 2) This is a high post break look that begins with a corner cut.



- 1) Once the ball is entered to the wing, the 4 player will down screen for 2 coming back up to the top of the key.
- 2) 2 needs to get depth on this screen to create a screening angle.



- 1) Once 4 sets the screen, he will make a 2nd cut out to the arc. And the ball will be reversed.
- 2) Notice how 5 has slid over slightly to create a screening angle.



- 1) Once 2 has reversed the ball, 5 will set a back screen for 2.
- 2) 5 will make an immediate 2nd cut hard to the ball side block. This a good action especially when x5 helps backwards on the backscreen on 2.
- 3) Notice the action on the weakside - 1 & 3 will slide up looking for their defenders to over help.