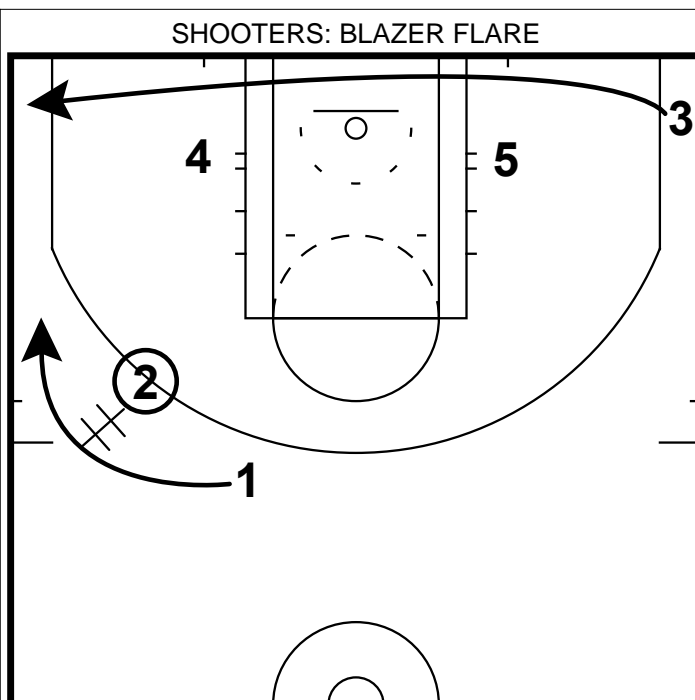
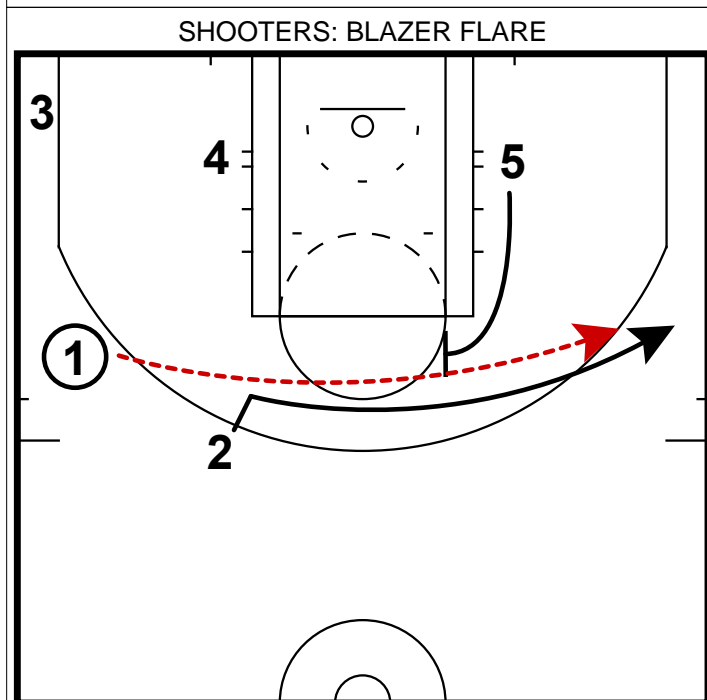


- 1) Having different formations to get the many of the same actions can be effective. It keeps the defense guessing.
- 2) Here we start in a 1-4 low set and flash the bottom guard to the wing to receive an entry pass.



- 1) As soon as the pass is delivered to the wing, 1 immediately cuts off of 2 and receives a handoff.
- 2) As the action is occurring, 3 is running baseline to replace 2 in that corner.



- 1) Now we have created a triangle set on the strong side and the defense's attention should be on the point guard.
- 2) Now the weakside post will slide up the lane and set a flare screen for 2.
- 3) **Coaching Point:** Dribble towards the flare screen to freeze the defense. The cutter needs to take a step towards the flare to be able to run off shoulder to shoulder.