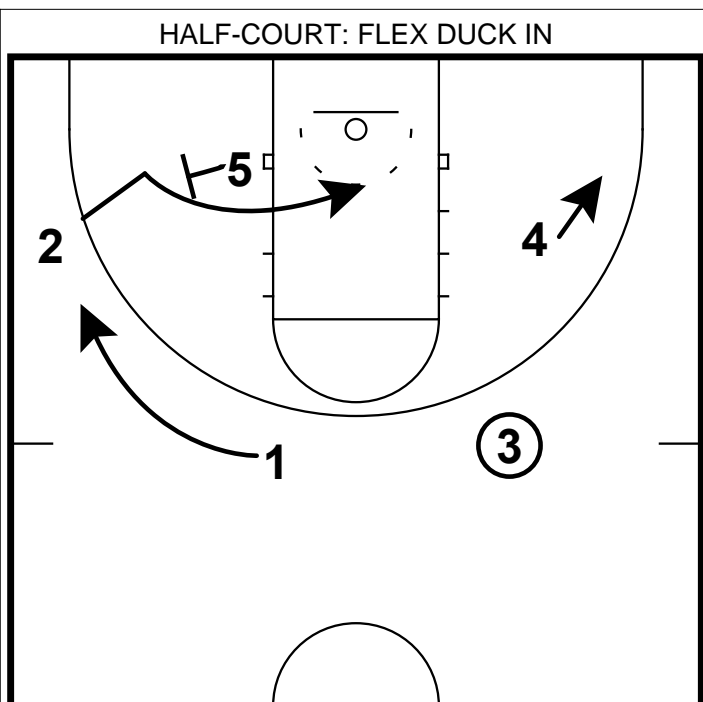
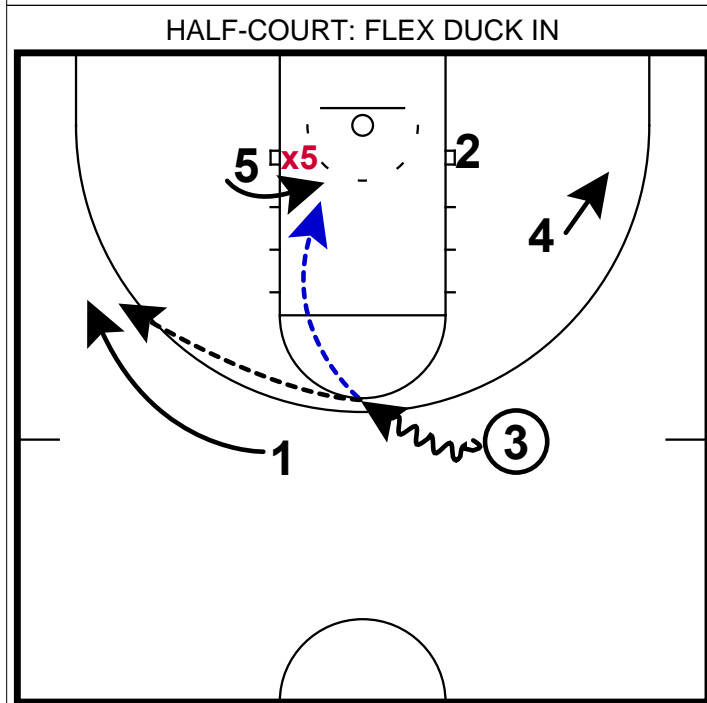


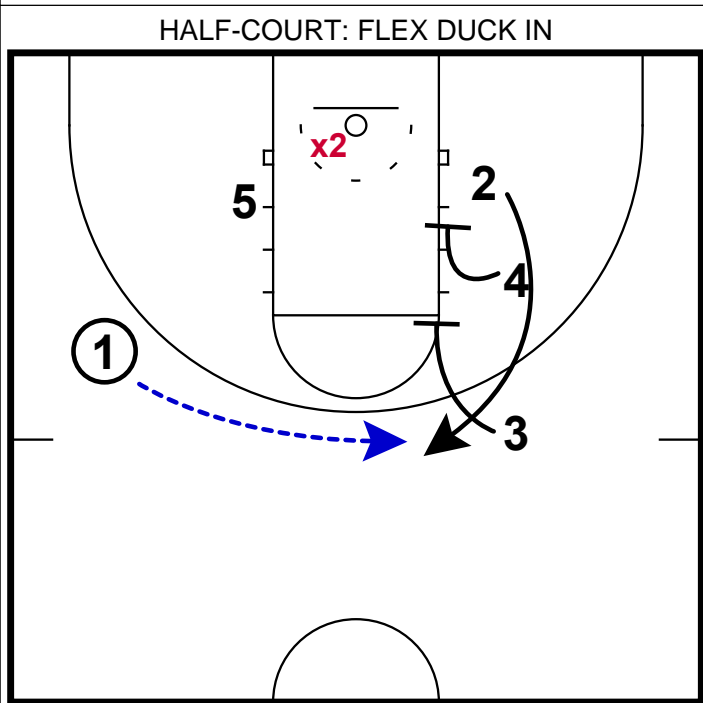
1) In an early pre-season match-up with UGA, Davidson ran this set after a baseline out of bounds throw in.  
 2) This set could be run for a post or a shooter.



1) The point guard will throw the ball away from the best shooter and then space to the wing.  
 2) Setting this screen here with a post player who can seal and score is good too.



1) The first read that the offense tried to look for was to feed the post on the 'duck-in' post.  
 2) In this game, they were unable to get the post feed so they reversed it back to the pg on the wing.



1) The reason why they could get the post duck-in was because **x2** was helping over.  
 2) 4 and 3 set a double screen away from the ball for the best shooter and got him an open look.