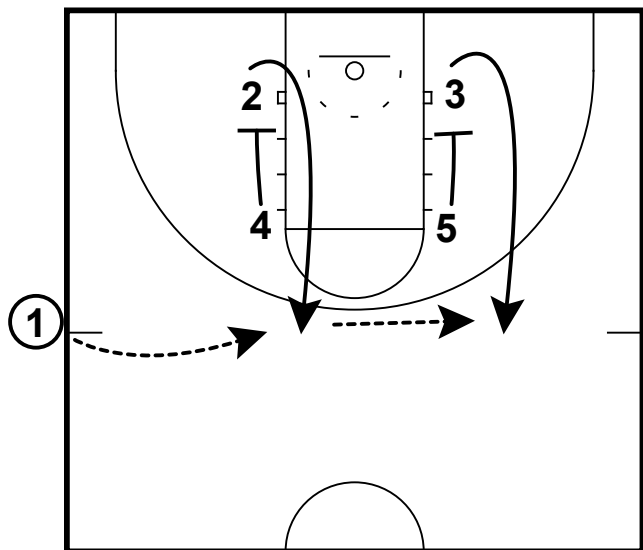
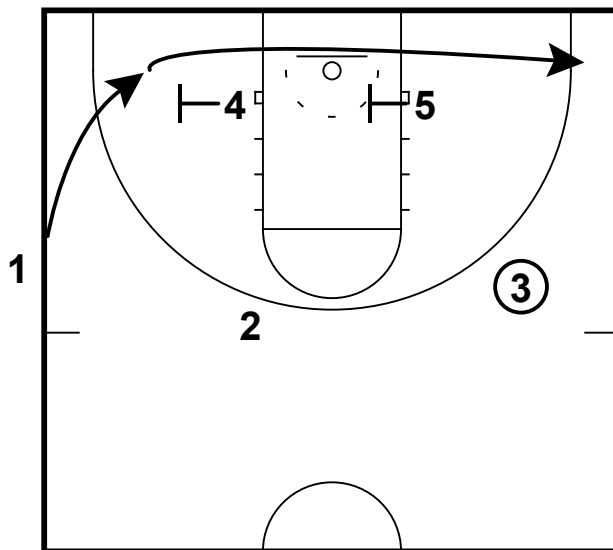


SOB: BOSTON



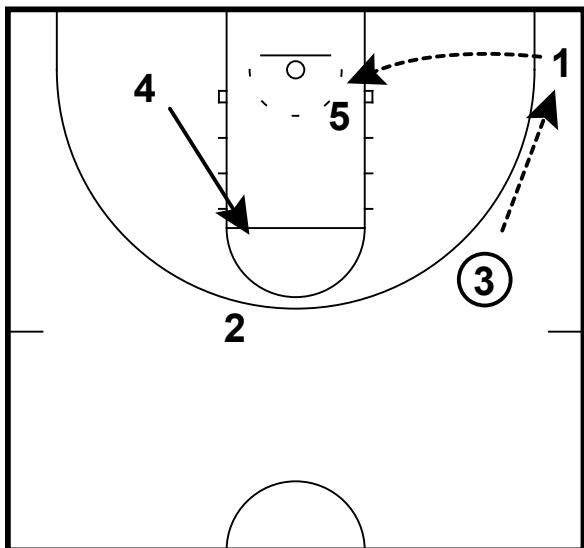
- 1) Have your best post feeder throw the ball in. Start your best shooter on the ballside block. Have your best post finisher on the backside elbow.
- 2) **Teaching Point:** Guards must wait on the screen. Do not go too soon.
- 3) **Teaching Point:** Backside guard do not use screen until 2 guard catches the ball on the perimeter.

SOB: BOSTON



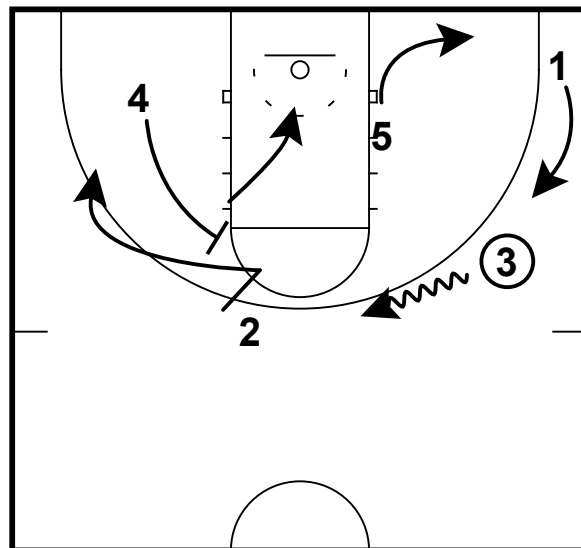
- 1) Once the ball has been reversed, 1 runs baseline off of 2 baseline screens
- 2) **Teaching Point** Cut hard off of the baseline screen. Make contact with the screener.

SOB: BOSTON



- 1) The first option off of this is to look to feed the post off of the baseline screen.
- 2) The opposite post must look to space to the opposite elbow area.
- 3) **Teaching Point:** Fake a pass to make a pass.

SOB: BOSTON



- 1) The second option is to set up you best shooter off of a flare screen. 4 should run to the elbow and 2 should take a step towards the rim and run off the screen.
- 2) **Teaching Point:** The guard with the ball needs to dribble the ball towards the flare screen.
- 3) **Teaching Point:** 1 and 5 need to be moving without the ball. Continue to space the floor even when not directly involved in the play.