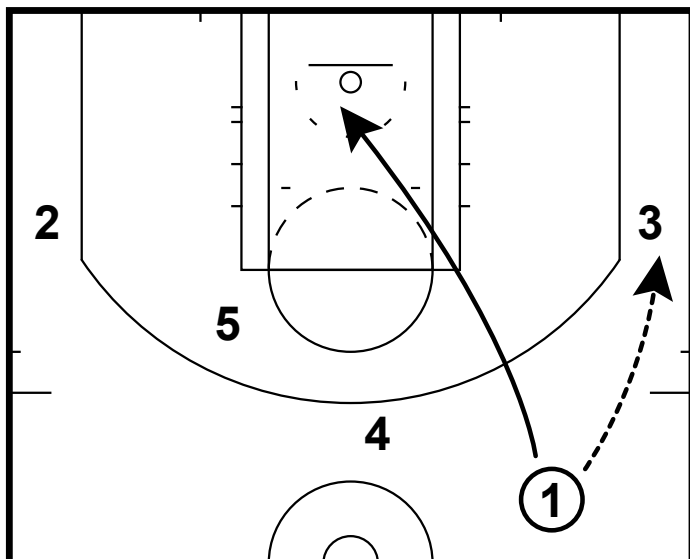


# Secondary Break

SECONDARY: LAKERS HANDOFF / FLARE

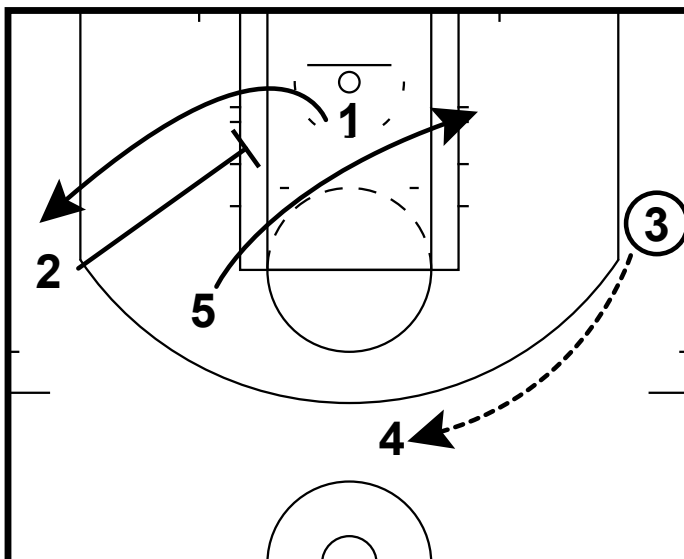
Frame 1



- 1) This is a secondary set that the Lakers ran out of the timeout situation in the preseason.
- 2) This alignment is a bit different in that both post players start high.
- 3) Once the the pg hits the wing, he makes an immediate basket cut.

SECONDARY: LAKERS HANDOFF / FLARE

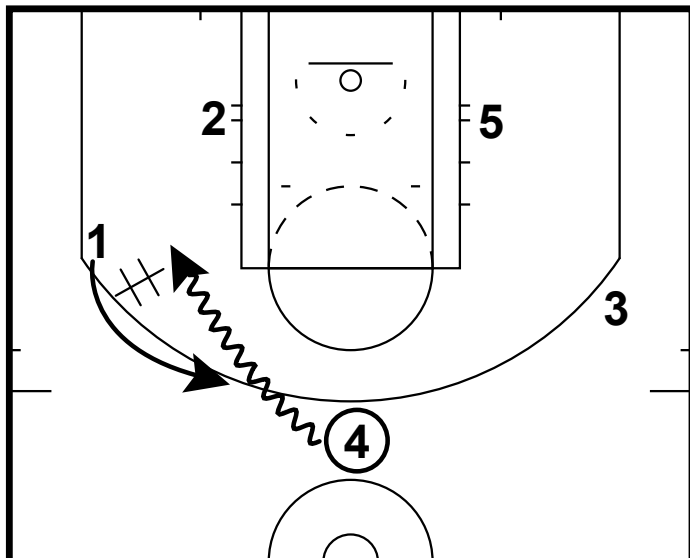
Frame 2



- 1) Now the ball will be reversed back to the trailing 4 player.
- 2) Here the opposite post will make a hard cut back to the ball side block area. This is to create some momentum for the opposing defense.
- 3) Now the opposite wing will pin-in the point guard, but the 4 player is not looking to reverse the ball here.

SECONDARY: LAKERS HANDOFF / FLARE

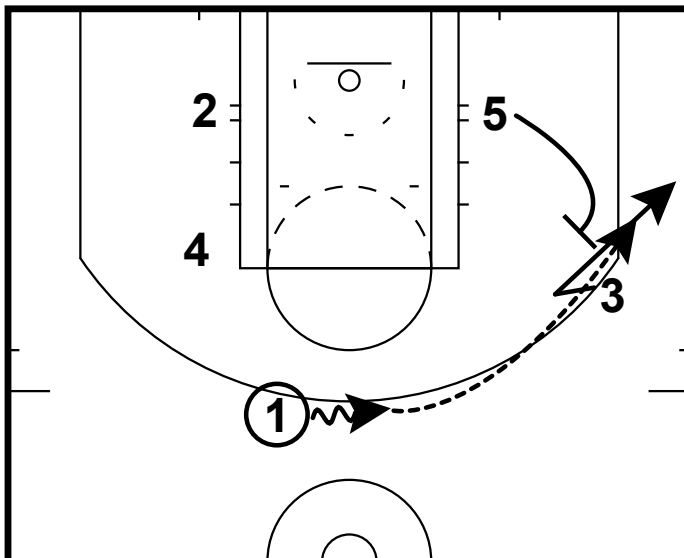
Frame 3



- 1) The 4 player will take 1-2 dribbles towards the point guard and he will run towards the dribbling 4 player.
- 2) This is a tough action to guard, especially since the point guard has just received a pin-in screen.

SECONDARY: LAKERS HANDOFF / FLARE

Frame 4



- 1) Now the point guard will dribble towards the action on the weakside.
- 2) The post player who had once started high, will now set a flare screen for the wing player.
- 3) **Coaching Point:** Timing is big here. Getting the screen set at the proper time will spring the shooter open.