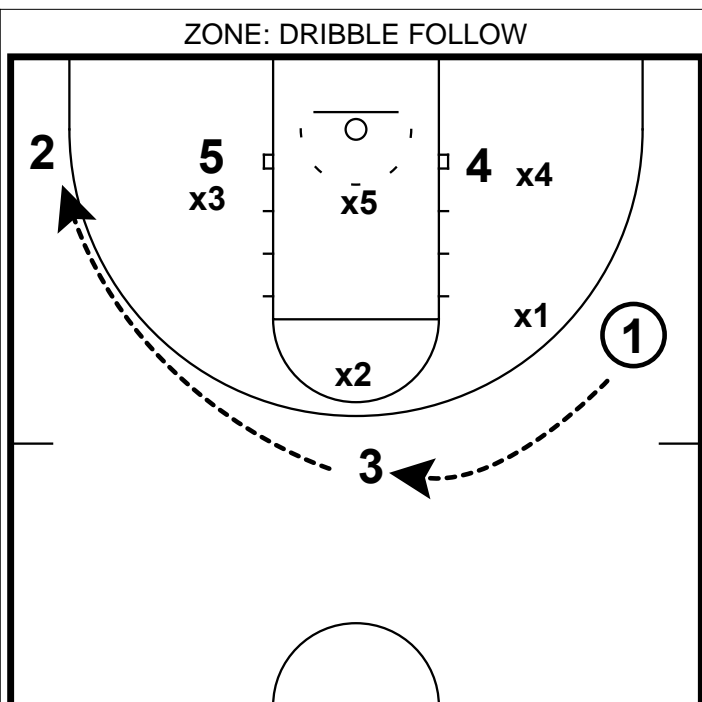
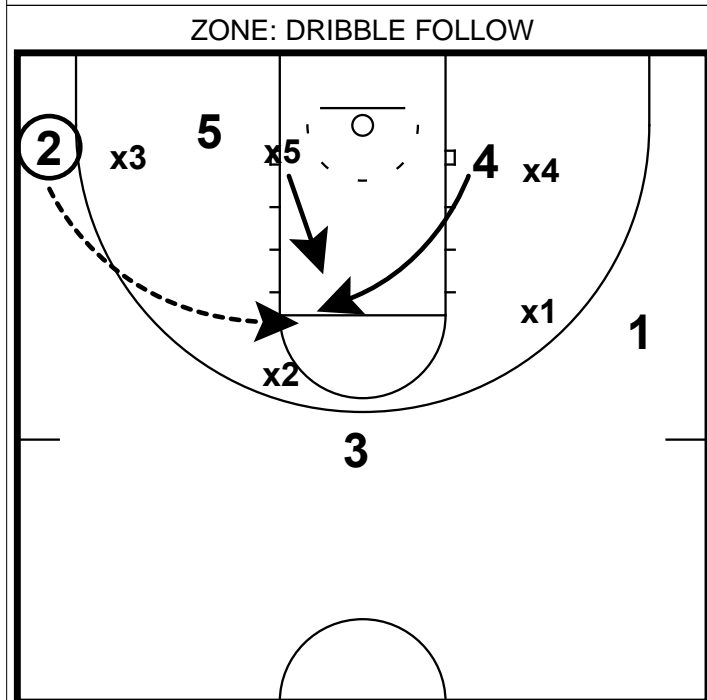


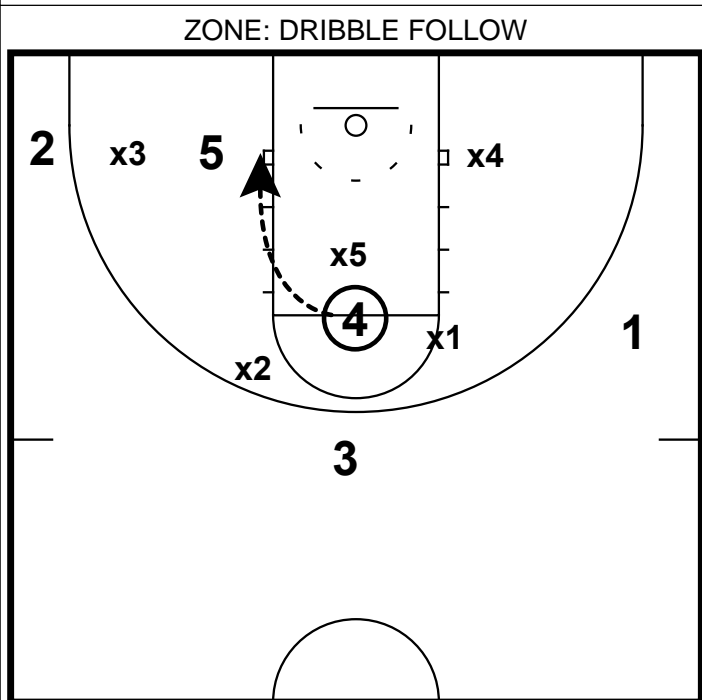
- 1) Vs. an even front zone, you need to have entries into your 3 out 2 in offense. Here is one.
- 2) 1 dribbles to the wing and 2 will run baseline.
- 3) 4 & 5 will find defenders to screen. 3 will follow 1 to the top of the key.



- 1) 1 will reverse the ball back to the top of the key and then throw it to the corner to 3.
- 2) **Coaching Point:** Setting a solid screen on the backside along with proper timing is the key to getting an open shot here. This a great quick hitter vs. a zone at the end of the quarter or shot clock.



- 1) If 2 is unable to get a quality shot off in the corner, this a great time to get into your 3 out 2 in zone offense.
- 2) The easiest thing to do is get a weakside flash from 4. Here he/she might be able to get a shot at the FT line.



- 1) However, if x5 is able to close out effectively on 4 and take away a shot - this will open up a "hi-lo" feed from 4 to 5.