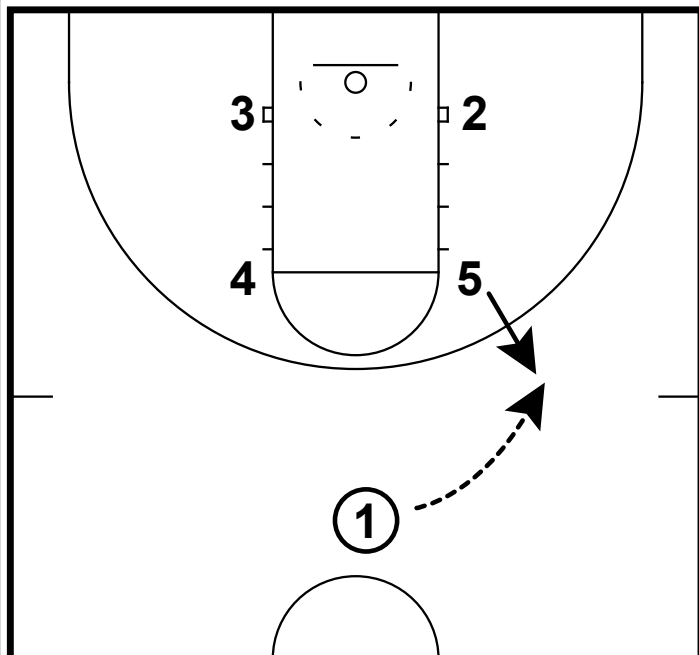
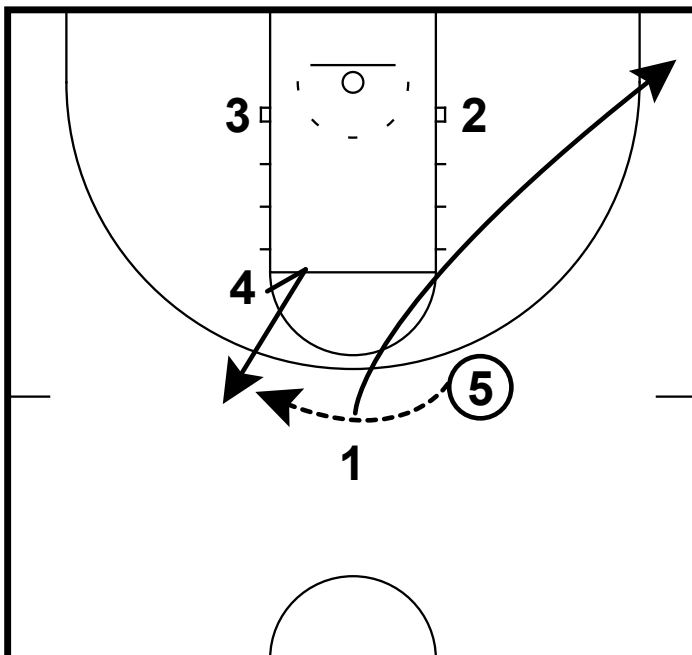


HALF-COURT: BUCKNELL BOX



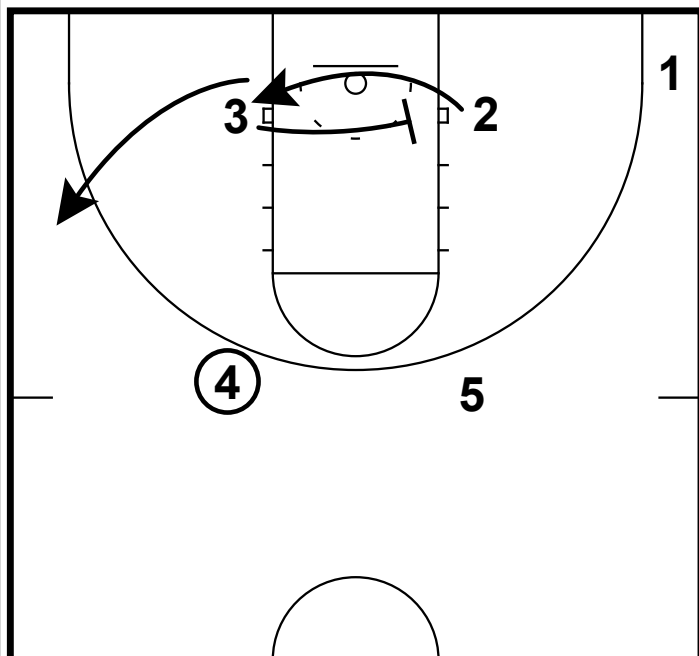
- 1) This is a set from Bucknell University out of a box set.
- 2) In this set you will see multiple screens that will lead either a post entry or open jumper.
- 3) It starts with 5 popping out to the arc to catch a pass from 1.

HALF-COURT: BUCKNELL BOX



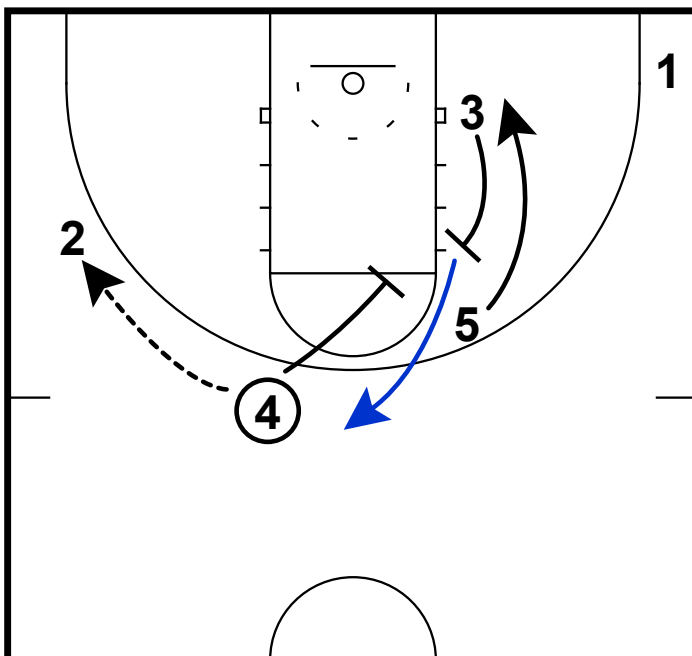
- 1) 1 will make a corner cut after passing to 5.
- 2) 5 will make a reversal pass from 4.
- 3) **Coaching Point:** 4 needs to set up his cut to be able receive the pass on the pass.

HALF-COURT: BUCKNELL BOX



- 1) 3 will set a cross screen on the baseline. This a chance to get 2 a quick on the block.
- 2) If 2 doesn't get the ball on the block, he should clear to the wing.

HALF-COURT: BUCKNELL BOX



- 1) Once 3 has set that cross screen he will set another screen, this time for a backscreen for 5.
- 2) 4 will reverse the ball to 2 and then set a down screen for 3.
- 3) This is a good chance for your shooter to be able to get a jumper, especially if **x3** has had to defend multiple screens.