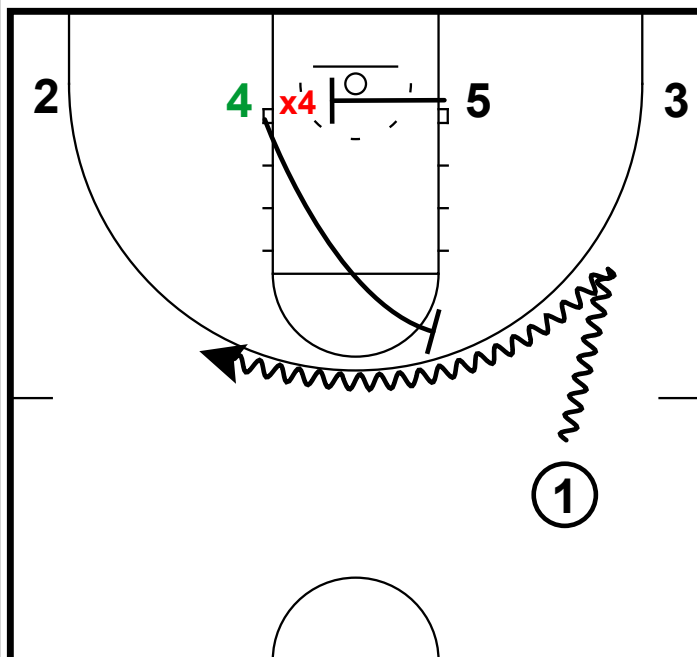
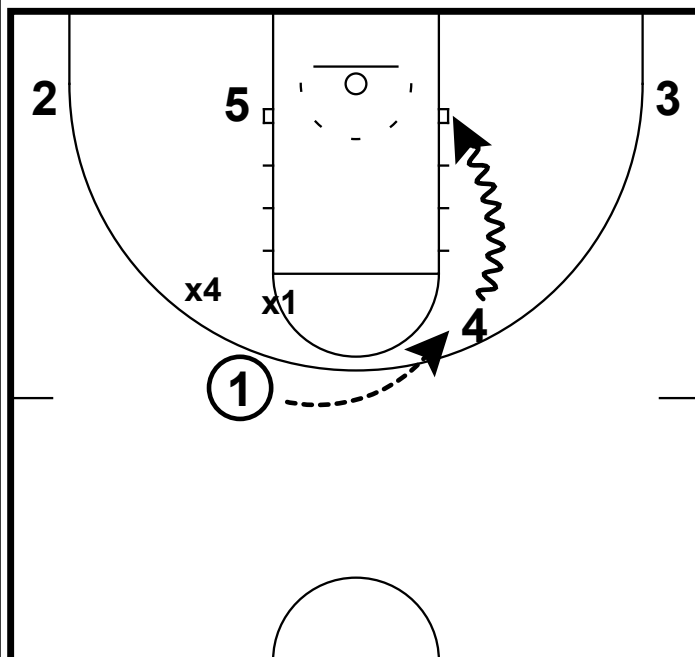


#05 BRIANNA TURNER: BALL SCREEN



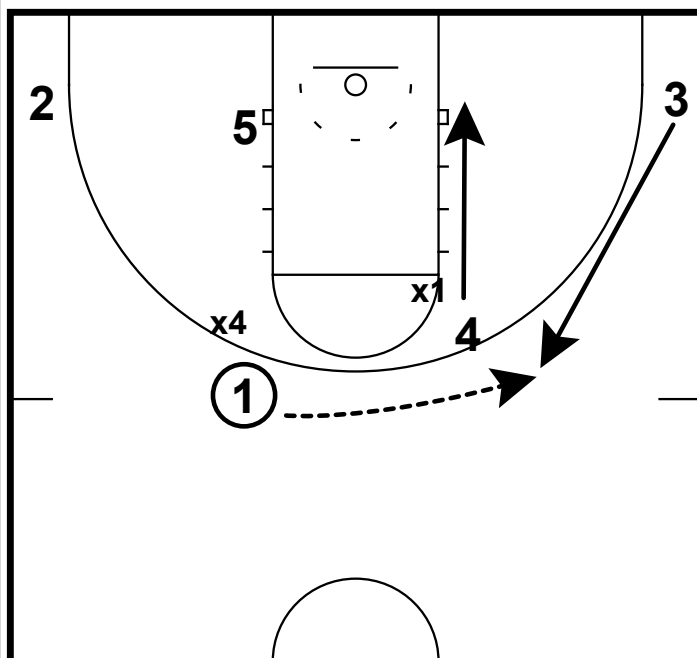
- 1) Brianna Turner is an active 4 player who can score facing the basket in the midrange and can take advantage of mismatches in the halfcourt.
- 2) Here out of a 1-4 low set, the post will come to set a cross screen for Turner. Normally a post to post screen will create a switch, but here Turner will immediately go to set the ball screen for the point guard.

#05 BRIANNA TURNER: BALL SCREEN



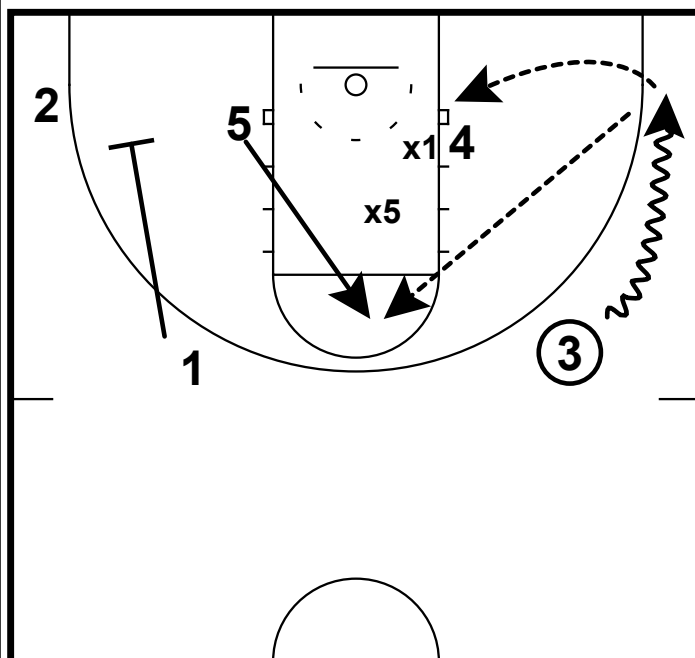
- 1) In the previous confusion of the cross screen, this could create a double team situation on the point guard. Especially since Notre Dame's point guard, Jewell Loyd is a prolific scorer.
- 2) This will free up Turner in perfect situation to score on the back side - either with a jumper or a drive.

#05 BRIANNA TURNER: BALL SCREEN



- 1) In the case of a switch, Turner is skilled enough to be able to score 1/1 vs. a smaller defender.
- 2) Or Turner may be able to slip down into the post to score 1/1 with her back to the basket.

#05 BRIANNA TURNER: BALL SCREEN



- 1) The opposite wing will need to fill up to FT line extended for the reversal pass and then dribble down to get a proper angle to the post.
- 2) Notice that the backside post will flash to create a hi-lo situation. This will prevent x5 from double teaming Turner on the block.