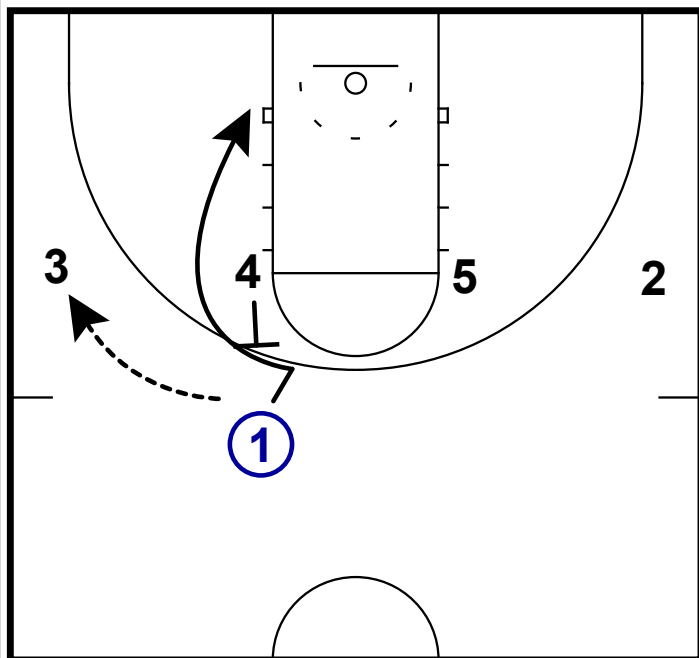
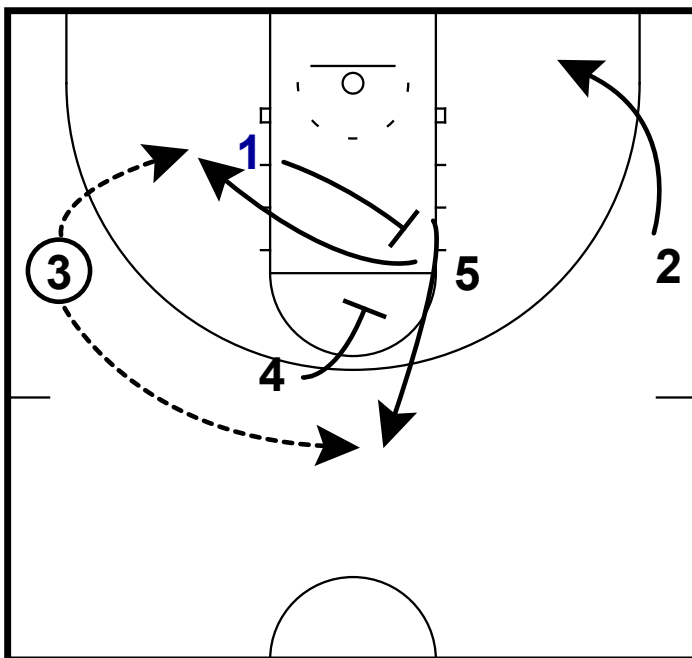


#08 SADIE EDWARDS: 1-4 HIGH SCREEN THE SCREENER



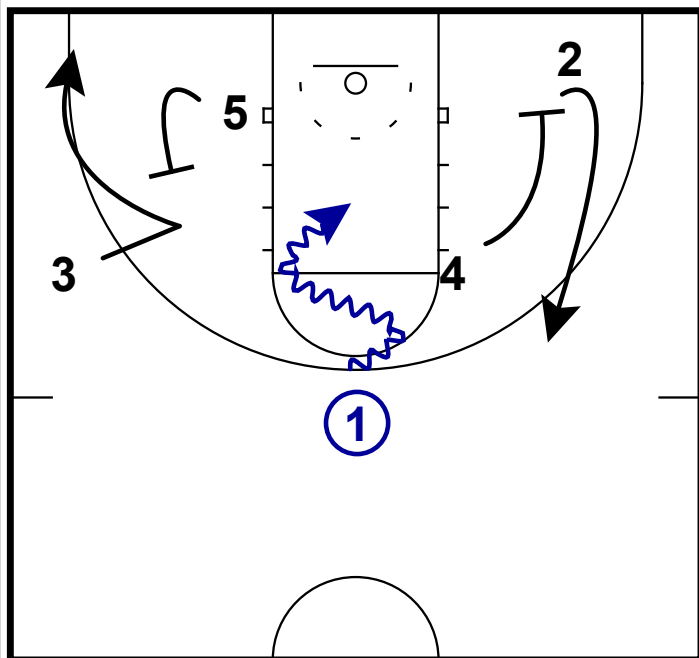
- 1) **Sadie Edwards** is a prolific scoring point guard in the 2014 class. She originally started her playing days as a wing. She has adapted that mentality well as a pg.
- 2) In this 1-4 high set, we can utilize her distributing skills as well as her ability to be a scoring guard.
- 3) Here she will deliver the ball to the wing and then immediately receive a "UCLA" screen from the ballside post.

#08 SADIE EDWARDS: 1-4 HIGH SCREEN THE SCREENER



- 1) In this frame we see several actions that could lead to a scoring opportunity.
- 2) This first look comes from **Edwards** setting a diagonal screen for the opposite post. The wing can look to hit that option. This is useful since defenders will not be quick to help off of a good scorer like Edwards.
- 3) Once 1 (**Edwards**) sets the diagonal screen, the ball side post will set a down screen for 1. **Edwards** is good enough to catch, square and knock down this 3 here.

#08 SADIE EDWARDS: 1-4 HIGH SCREEN THE SCREENER



- 1) With **Edwards**, who is a great play-maker, in the middle of the court - her teammates should space to open up the lane for penetration. Since she is very tough to guard 1/1, setting screens on the wing is key, so the defense will not "zone" up the lane.
- 2) On both sides, it is the post players who setting the screens. 5 setting a "flare" screen and 4 setting a down screen.