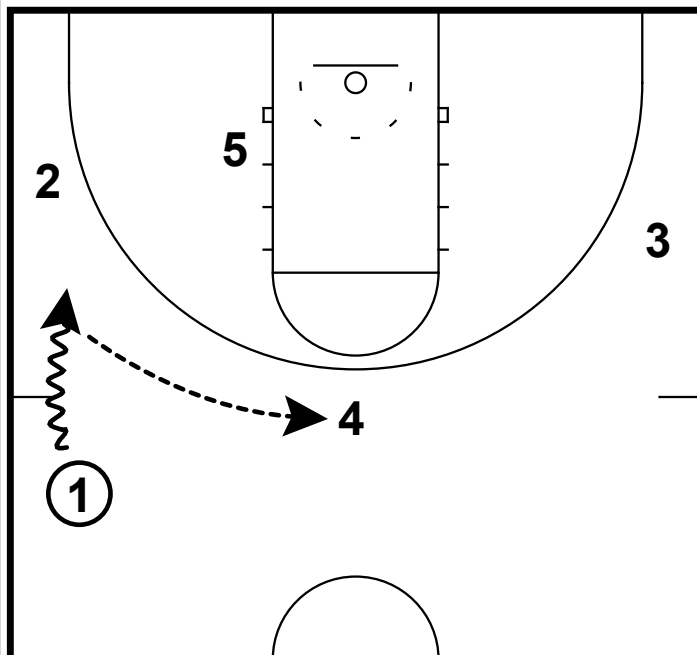
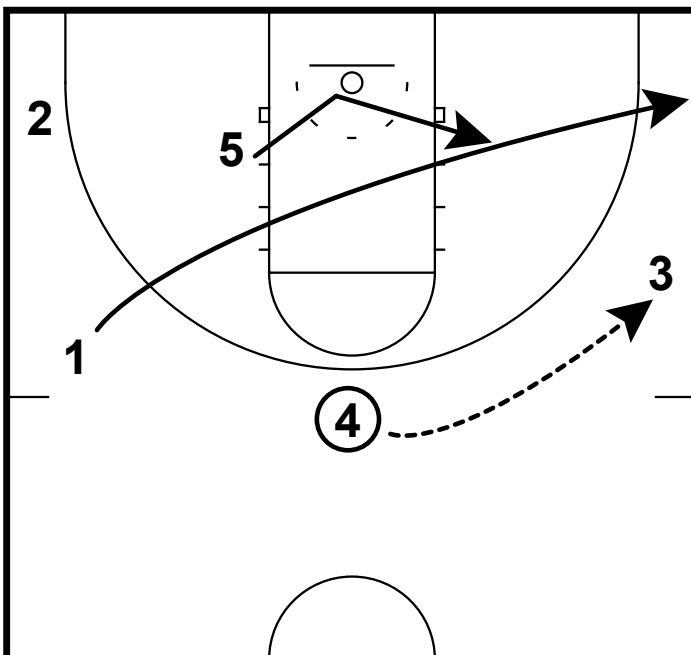


SECONDARY: 3RD SIDE DOUBLE



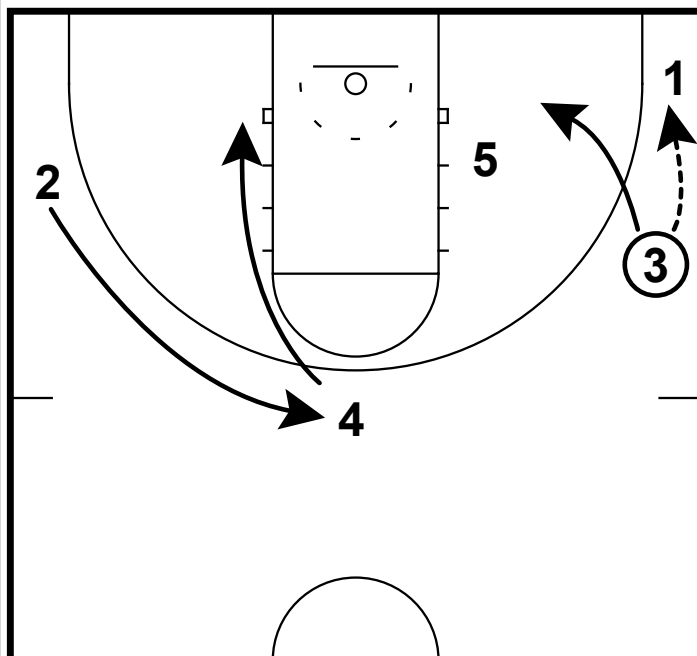
- 1) This is a secondary that emphasizes getting the ball to the 3rd side.
- 2) Most teams can do a good job of reversing the ball to the 2nd side, however they often settle for mediocre shots after the reversal.
- 3) This secondary puts an action in after the reversal to ensure that the ball gets back to the "3rd side."

SECONDARY: 3RD SIDE DOUBLE



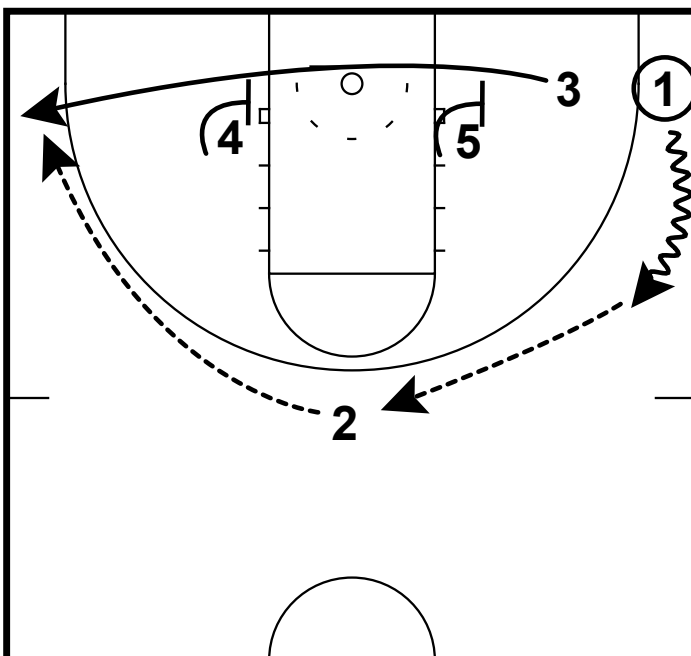
- 1) Two actions occur here to ensure that the proper spacing will occur.
- 2) The point guard will make a clear cut after reversing the ball to the 4 player at the top of the key.
- 3) Then the post player will follow the reversal pass to create a triangle on the weakside.

SECONDARY: 3RD SIDE DOUBLE



- 1) Once the ball is reversed 4 will dive to the low post and 2 will fill up to the top of the key.
- 2) At this point, 3 can throw the ball to 1 in the corner and make an immediate cut to the baseline.
- 3) However, 3 could also simply reverse the ball to 2 at the top of the key and the same action could occur.

SECONDARY: 3RD SIDE DOUBLE



- 1) If the ball is thrown the corner, 1 will need to **shorten the pass** by dribbling toward the top of the key.
- 2) With the ball at the top of the key, now we have 3 set up for a baseline double screen.
- 3) We often find that defenses can guard 1 or 2 actions. They are also good on the 1st & 2nd side of ball reversals, however they are not as good on the 3rd side after multiple actions.