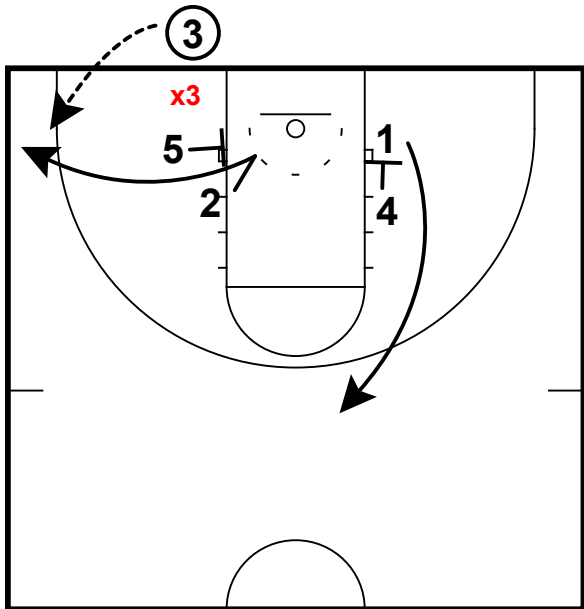
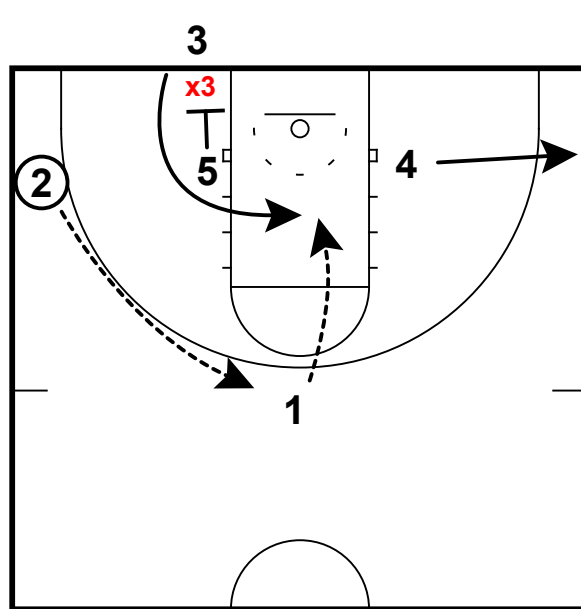


BOB: STACK PIN-IN



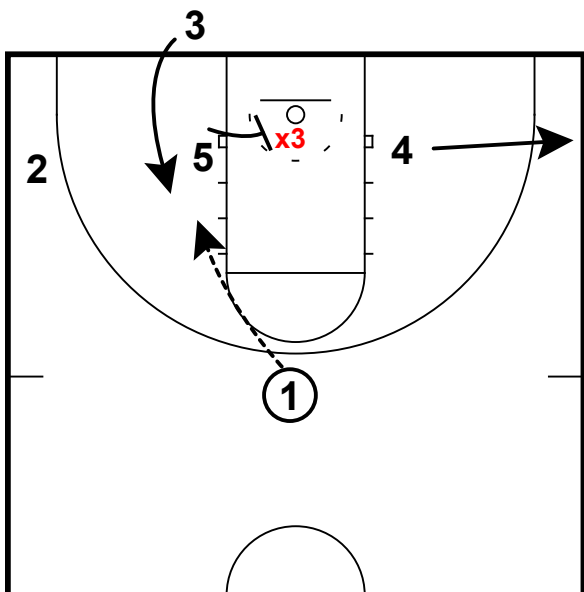
- 1) Stack formation with your best finisher inboundng the ball on the baseline.
- 2) A pin-in screen on the block for the guard and then a down screen on the backside to pop the point guard to the top of the key.

BOB: STACK PIN-IN



- 1) 2 will reverse the ball to the top of the key and 4 will space to the corner.
- 2) 5 will then pin down for 3 who will curl around into the lane for the finish at the rim.
- 3) **Teaching Point:** This works best when the defender is on the ball.

BOB: STACK PIN-IN



- 1) If the defender who is guarding the ball is protecting the basket, the adjustment is to "head-hunt" the defender under the rim and find 3 running right up the lane line.