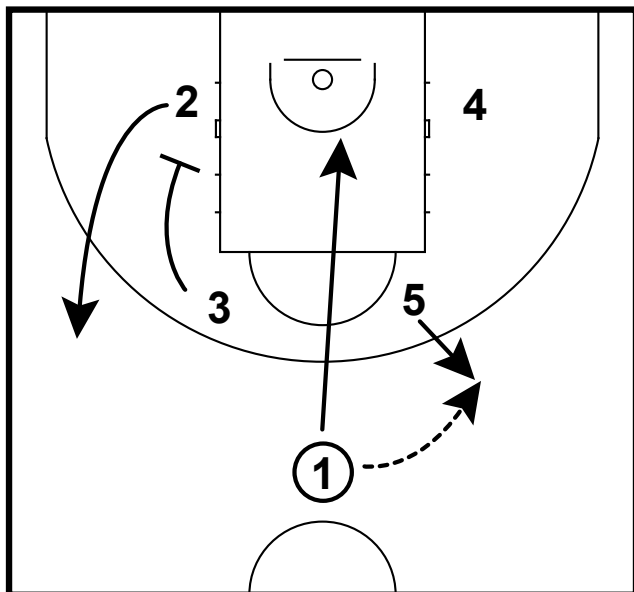
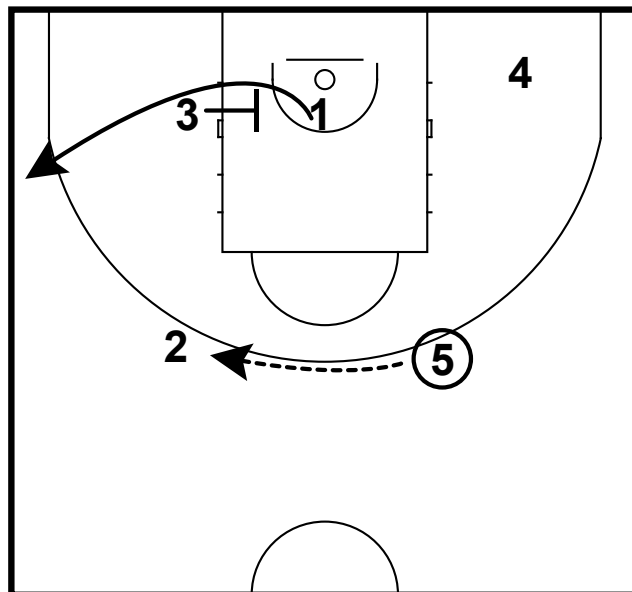


HALF COURT: EUROLEAGUE HIGH POST ENTRY



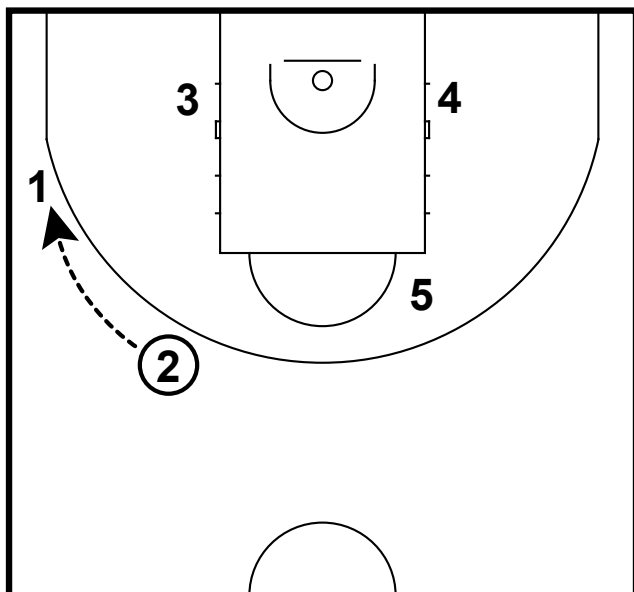
- 1) This set comes in the form of a box set. But both post players will start on the same side.
- 2) On the other side, a down screen will occur.
- 3) The point guard will throw the ball to 5 and then make a basket cut.

HALF COURT: EUROLEAGUE HIGH POST ENTRY



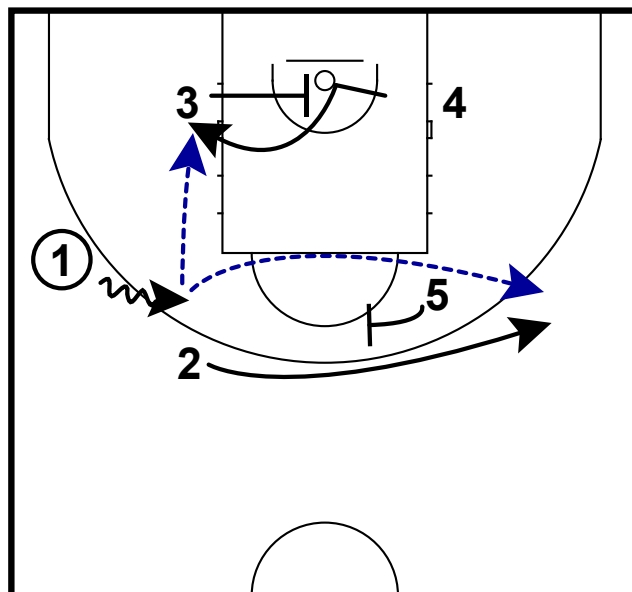
- 1) The post player will throw the ball back to the wing who came off the down screen.
- 2) Underneath the basket, 3 will set a pin-in screen for the PG.
- 3) Notice how the 4 player has stepped off the block to create space.

HALF COURT: EUROLEAGUE HIGH POST ENTRY



- 1) The ball will now be reversed back to the point guard on the wing.
- 2) 4 has now shaped up on the opposite block and 3 has settled in on the ball side block.
- 3) 5 is still on the elbow.

HALF COURT: EUROLEAGUE HIGH POST ENTRY



- 1) With 1 on the wing with the ball, he will drive the ball to the elbow.
- 2) This will trigger 2 to use a flare screen from 5. This is opportunity to get a shot for your best shooter.
- 3) Underneath the bucket, 3 will set his 3rd screen - this time for the opposite 4 player.