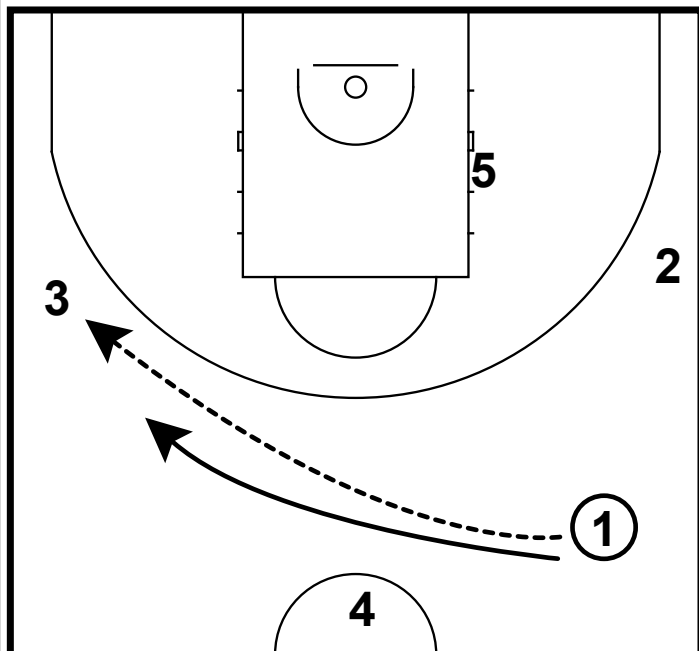
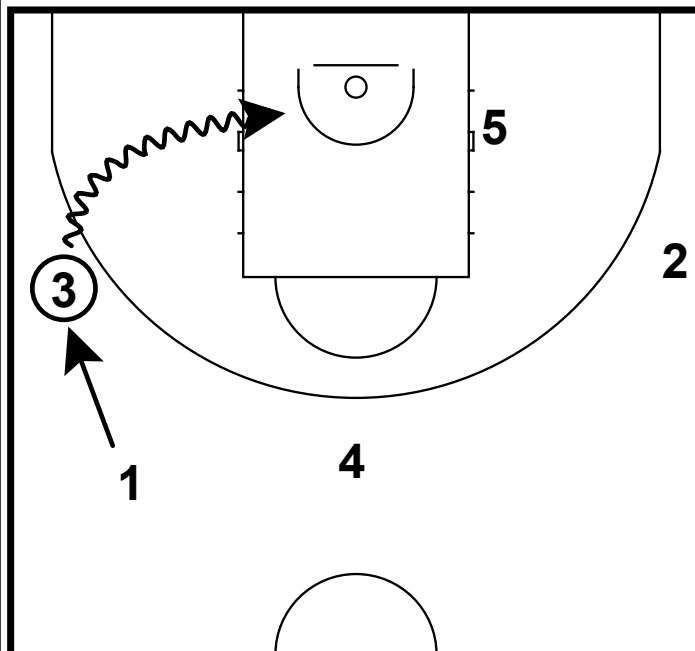


EURO: DRIBBLE DRIVE FLARE



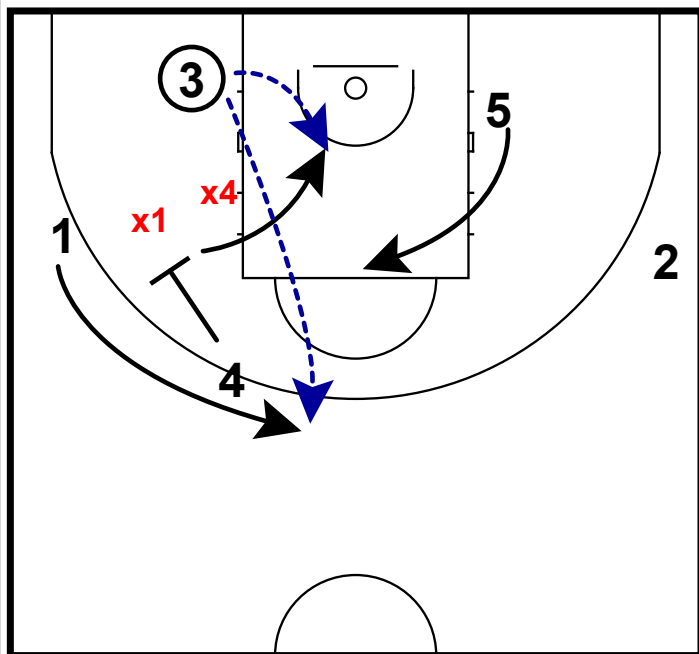
- 1) Here is a break option where the pg crosses the pass to the opposite side of the floor.
- 2) The pg needs to follow his pass and fill in back behind the pass.
- 3) The post player needs to stay away here.

EURO: DRIBBLE DRIVE FLARE



- 1) 3 will look to attack baseline. If **x5** does not help, then 3 will have an open lay-up.
- 2) If **x5** does help over, there could be a chance to dump to 5 on the back side.
- 3) 1 will fill in back behind.

EURO: DRIBBLE DRIVE FLARE



- 1) Here is where you can punish the defense for over-helping.
- 2) With the ball in the short-corner, the trailing 4 player will set a flare screen for 1 who has trailed the play.
- 3) The action after this is for the 4 player to slip to the bucket & the opposite 5 player will fill up to the FT line to take away the help.