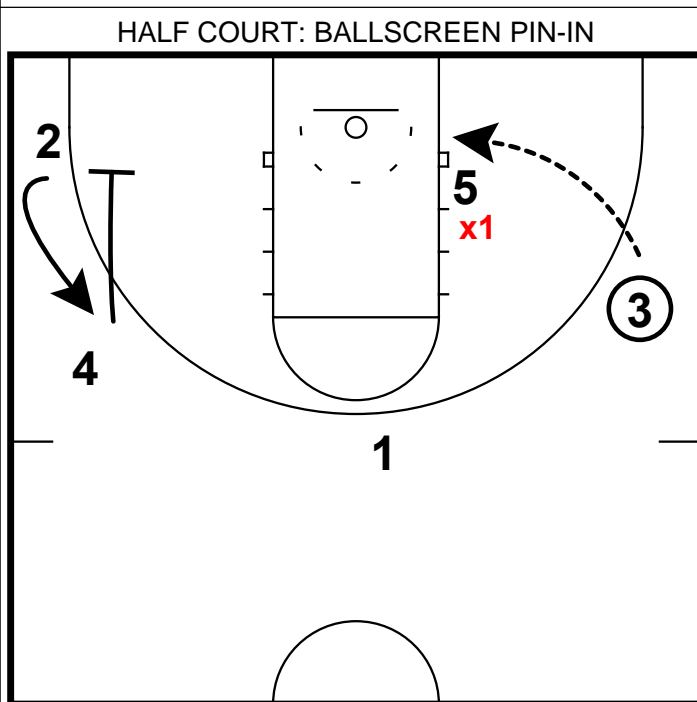
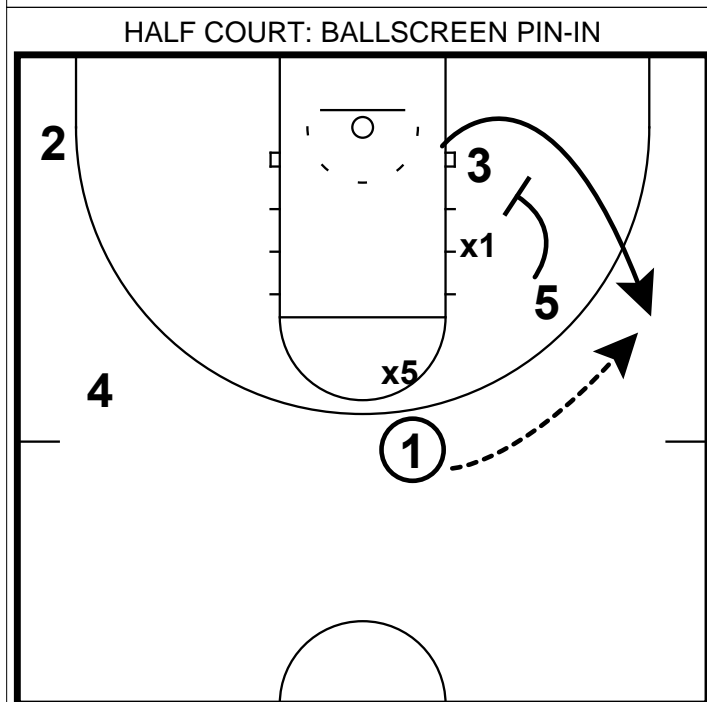


- 1) Late in the game vs. **Notre Dame**, **UConn** needed a bucket to tie the game in the Big East Championship.
- 2) Knowing that **Notre Dame** switched a lot of ball screens, they set a "big on little" ball screen on the wing. They put a shooter in the opposite corner.

- 1) The point guard uses the screen, and doesn't try to turn the corner. She is just trying to stretch the defense and set up the next action.
- 2) 4 and 2 need to be prepared and occupy the defense. Be prepared for a skip pass if their defender helps off.



- 1) With the switch that now has occurred, 5 now sets the down screen for 3.
- 2) Ideally here you would like to be your best scorer. Someone the opposing team cannot afford to switch off of and that will keep **x1** on the post.
- 3) In this game, **Kaleena Lewis** is in the 3 spot.

- 1) With the ball reversed to 3 and 5 posting up on a smaller defender, the easy post feed should be made.
- 2) On the weak side, 4 and 2 should engage in some movement to keep the defense occupied as this action is occurring.