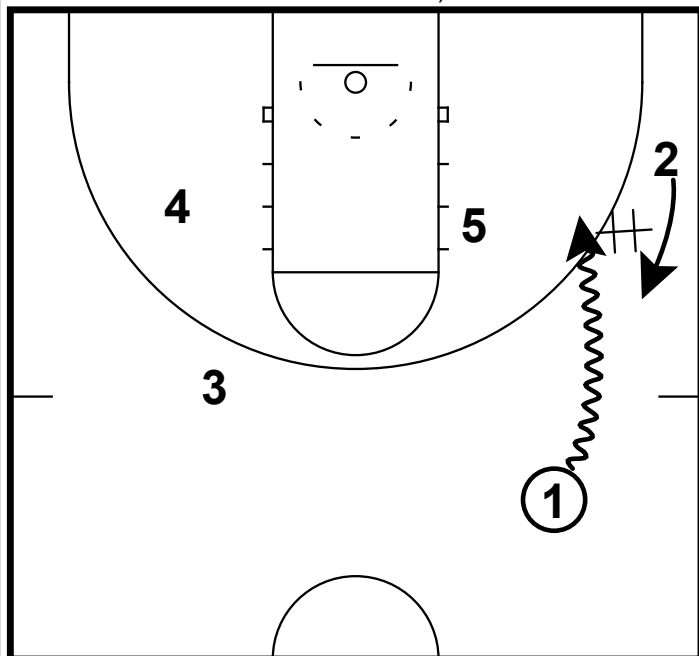
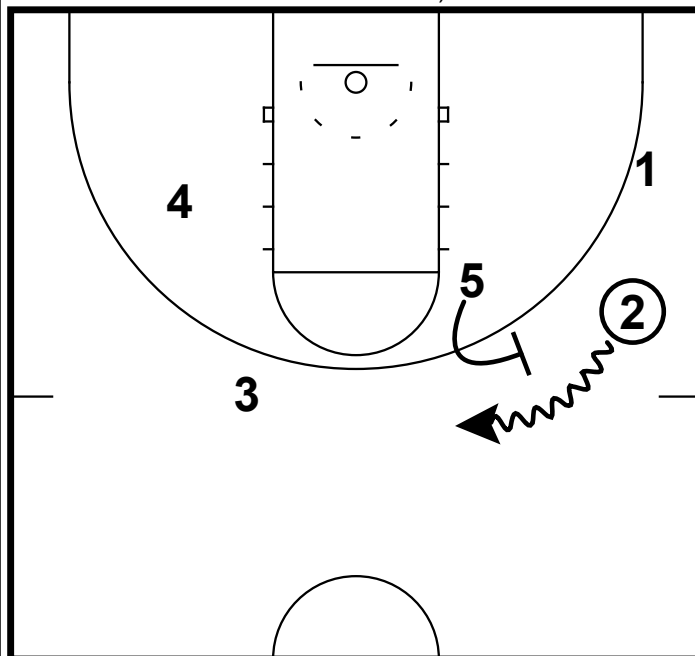


HALF COURT: CREIGHTON FLARE (DOUG MCDERMOTT)



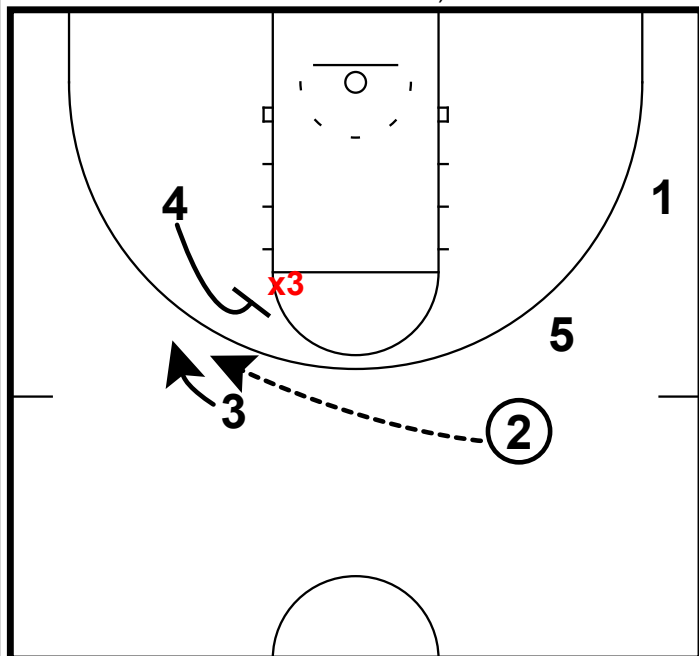
- 1) On a night where **Doug McDermott** was on fired scoring 39pts & at one point had outscored St. John's by himself early in the 2nd half.
- 2) St. John's would eventually cut into that lead & make it a tie game under :10 seconds.
- 3) **Creighton** ran this action to get **McDermott** a shot. It starts with the PG bringing the ball down the right hand side & giving a hand off to the wing.

HALF COURT: CREIGHTON FLARE (DOUG MCDERMOTT)



- 1) After the handoff the wing immediately gets a ball screen from the ball side post.
- 2) This action all happens very quickly. Timing is everything here.

HALF COURT: CREIGHTON FLARE (DOUG MCDERMOTT)



- 1) As soon as the wing comes off of the ball screen, the backside post slides in to set a flare screen for McDermott.
- 2) Normally you would have the screener set this screen with his back to the corner. However, the angle that this screen was set a bit differently.
- 3) **McDermott** nails the shot & ensures the victory.