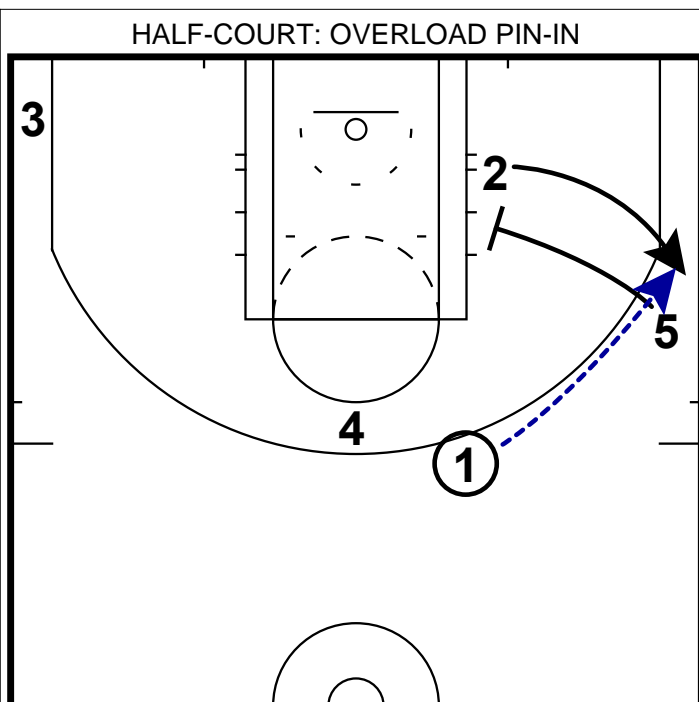
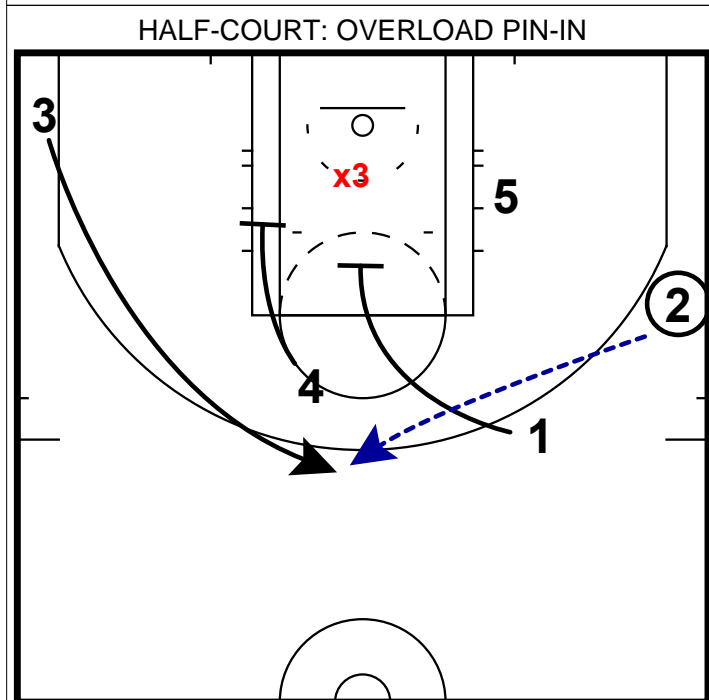


- 1) This is a set that the Texas Legends ran in a D-League game this week.
- 2) Interestingly, they ran this with the post player on the wing.
- 3) In this frame we see the shooter set a downscreen for the 4 who will set a ball screen.



- 1) After the ball screen the post player will pin in the shooter on the block.
- 2) Having a player who can turn & shoot here is a key.



- 1) In this frame what we see is what could happen if the guard tries to feed the post.
- 2) If **x3** helps over to take away the post feed, setting a double stagger here would be a good opportunity to hit a top of the key jumper.