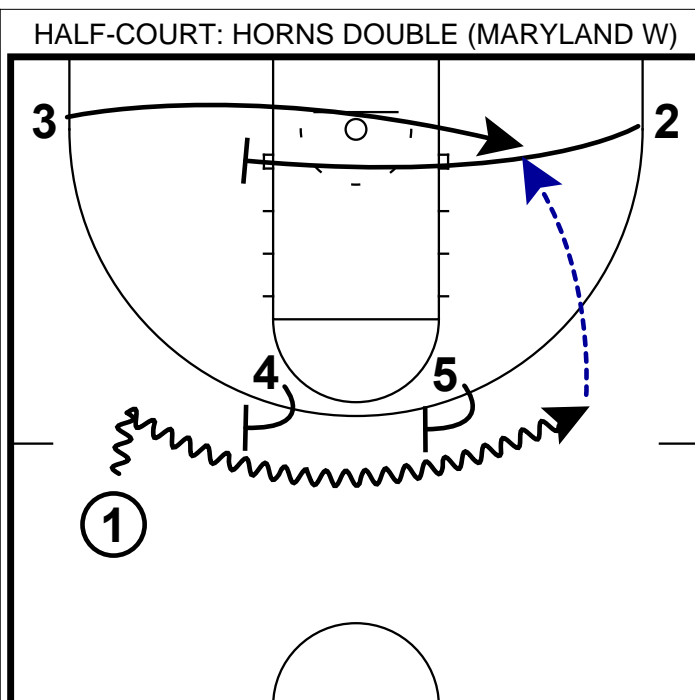
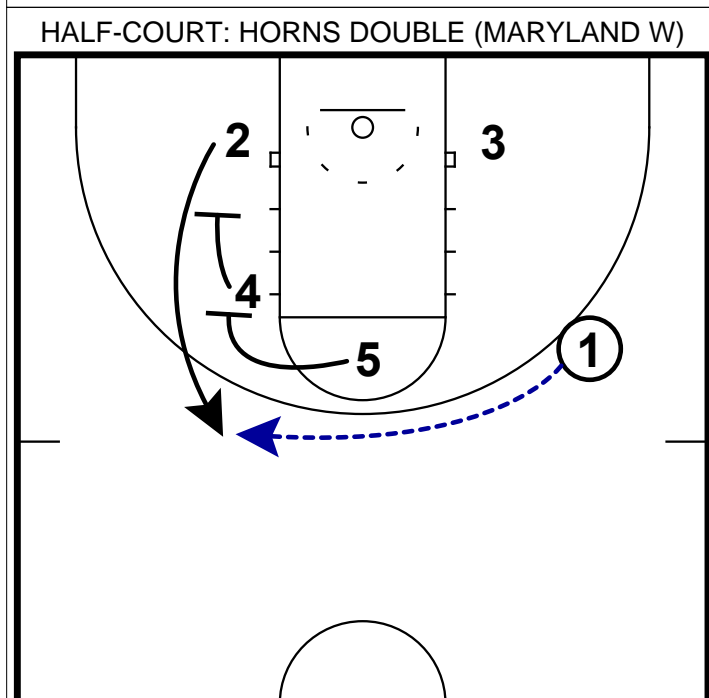


- 1) This is a set that the Maryland women's team ran out of their horns set vs. North Carolina in an early January match-up.
- 2) In this set, the Maryland point guard brought the ball up the left hand side of the floor rather than centering the ball.



- 1) Here the point guard runs off of 2 ball screens from each post player.
- 2) Along the baseline, the opposite guard will run and set a baseline screen.
- 3) This an option especially if the defense is asleep - you could end up an easy lay-up along the baseline.



- 1) Here is the option that Maryland did get in their game. The wing received a double stagger screen for an open jumper.
- 2) In fact in this game, the guard shot faked and hit a one dribble pull-up because the defense rushed out after her.