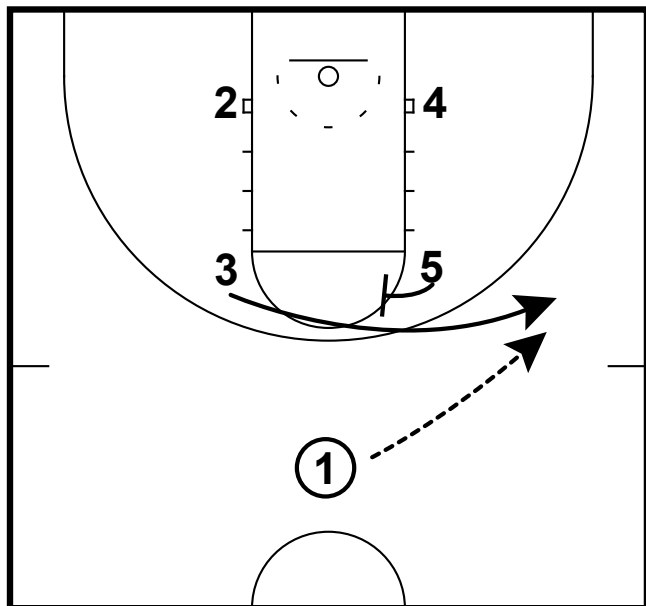
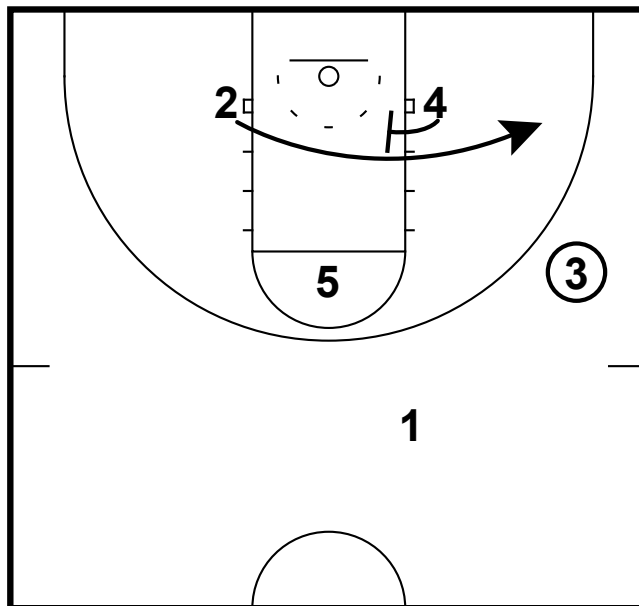


HALF-COURT: OVERLOAD BACKSCREEN VANDY (W)



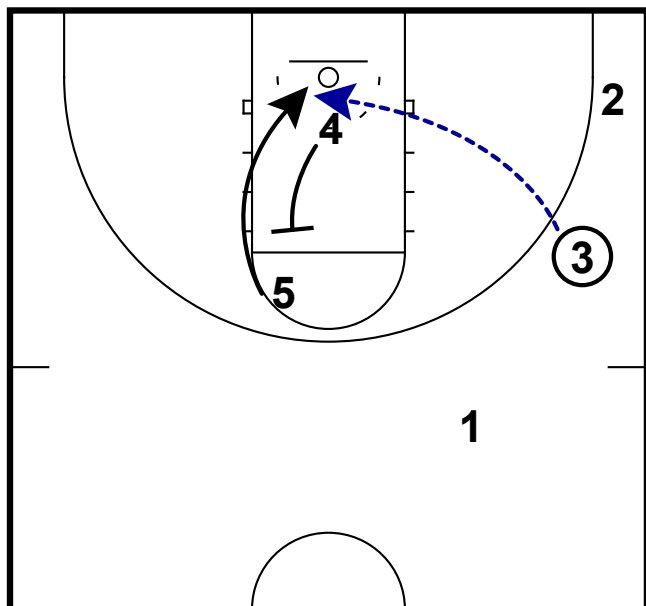
- 1) This is the first play that Vandy ran out of the half vs. South Carolina on the road in a conference game.
- 2) They line up in a box set and ran a wing off of quick screen.

HALF-COURT: OVERLOAD BACKSCREEN VANDY (W)



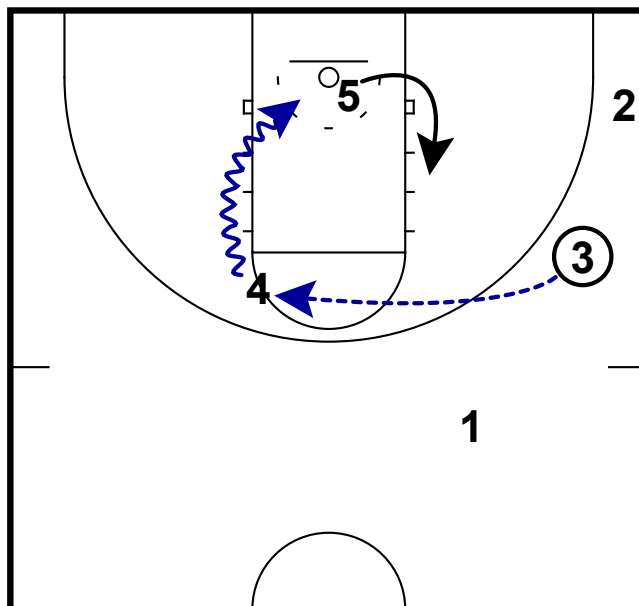
- 1) With the ball on the wing here, along the baseline the other wing will come off of baseline screen to the corner.

HALF-COURT: OVERLOAD BACKSCREEN VANDY (W)



- 1) This creates an overload situation where there are 4 players on one side of the floor.
- 2) Now setting a back screen with the 4 player for the center creates a possible lob situation.

HALF-COURT: OVERLOAD BACKSCREEN VANDY (W)



- 1) In this game, Vandy did not get the lob play but they did find the 4 player at the elbow.
- 2) This year since Vandy has such a small lineup - it was Christina Foggie who catches the ball and rips it to the bucket.
- 3) Heather Bowe the post player on the block did a good job sealing the defender away to prevent the help defense from coming over.