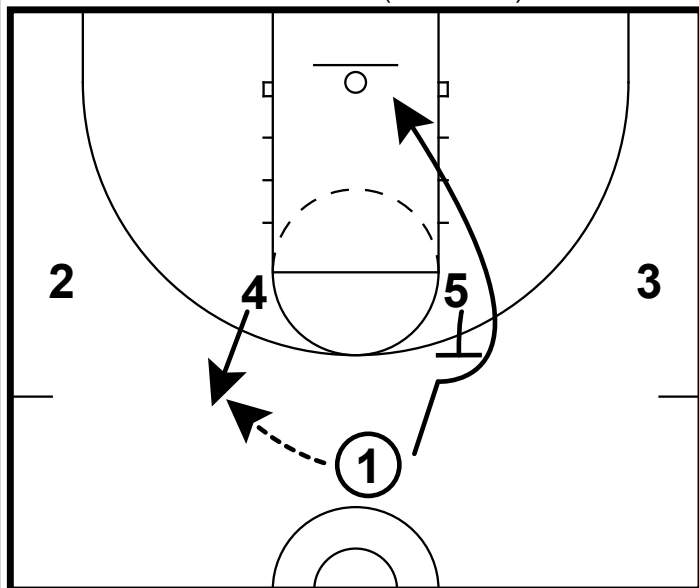
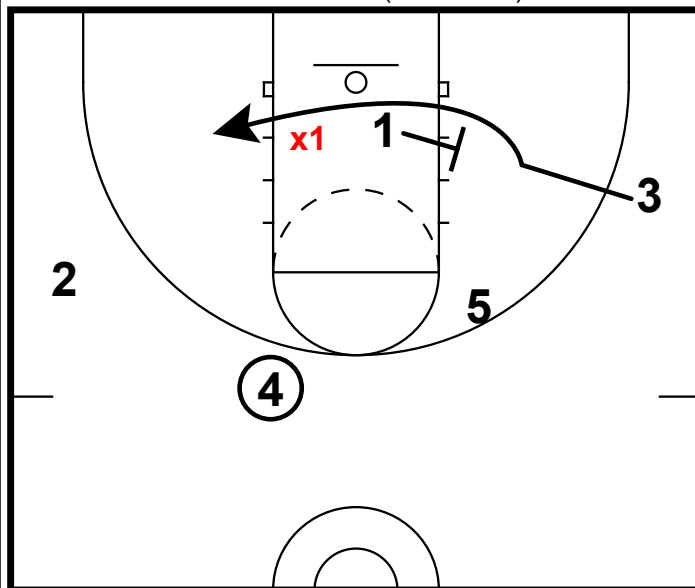


POSTS: UCLA (PIERCEY)



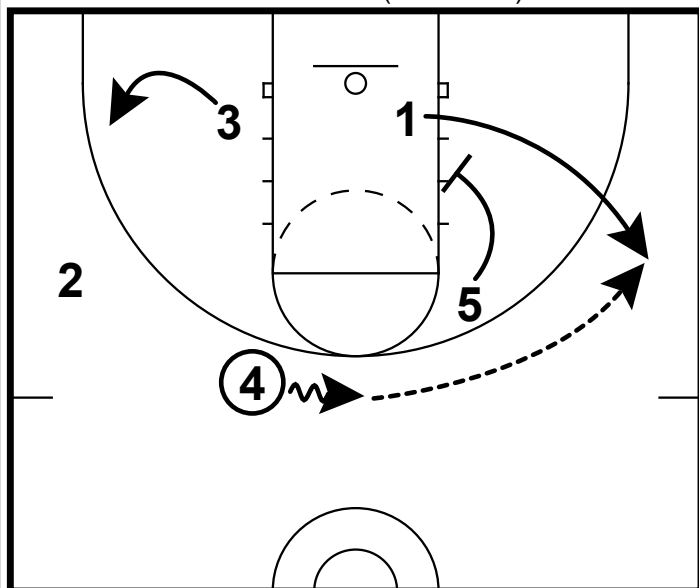
- 1) This is a post entry set that comes out of a 1-4 high set and a UCLA cut.
- 2) In order for this set to work well, having a 4 player who can handle the ball while facing the basket. Also your point guard must be a player that is a good passer.
- 3) I picked up this set from **Jason Piercey** whom I worked with at FCS in Lebanon, Tenn.

POSTS: UCLA (PIERCEY)



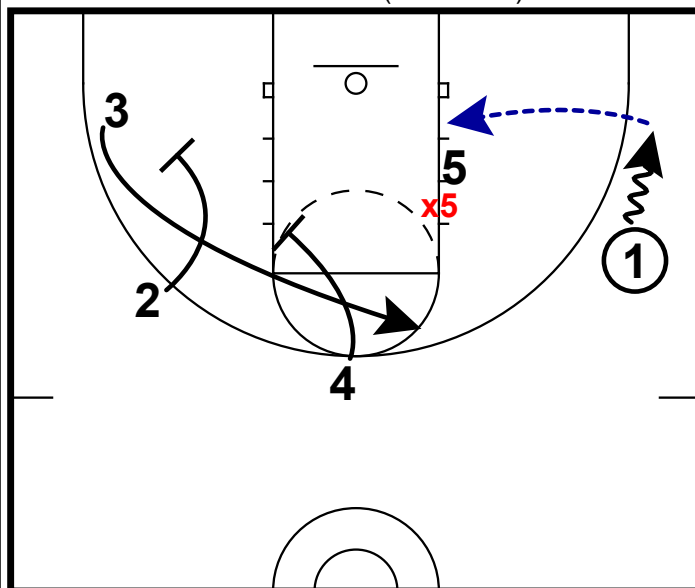
- 1) After the UCLA cut has occurred for the point guard, he/she will set a baseline screen for the opposite wing.
- 2) This should be your first option. If the defense gets too locked into 3 he could pop open for a wide open lay-up here.
- 3) However, as you see in this frame **x1** should help off or even switch taking this option away.

POSTS: UCLA (PIERCEY)



- 1) Here is where your 4 player will need some ball skill to be able to make this pass.
- 2) 5 will come and set a down screen for 1 after setting the baseline screen. A switching defense will put themselves in trouble here, because this a "big on little" screen.
- 3) Away from the ball, 3 needs to space to the corner to set up the next option.

POSTS: UCLA (PIERCEY)



- 1) If the defense does not switch the down screen, more than likely **x5** will be stuck on the top side of the post.
- 2) Depending on where 1 catches the ball, he/she may need to quickly towards the baseline to feed the post.
- 3) Away from the ball, a double screen should be set for 3 to clear out the helpside.