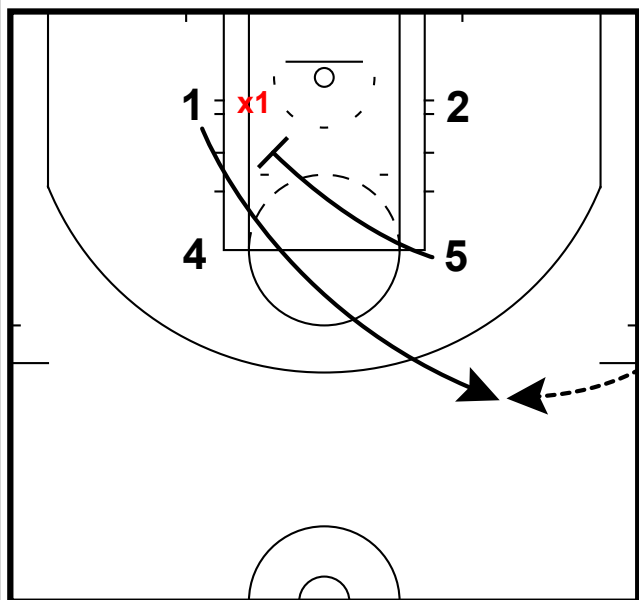
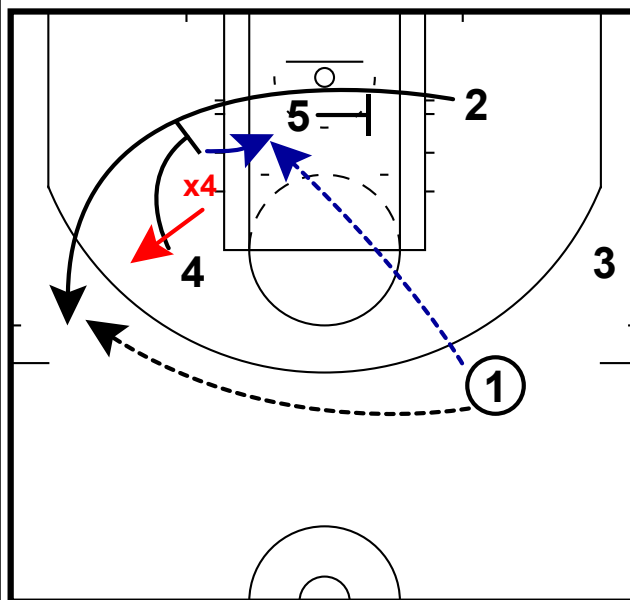


SOB: CELTIC DIAGONAL DOUBLE



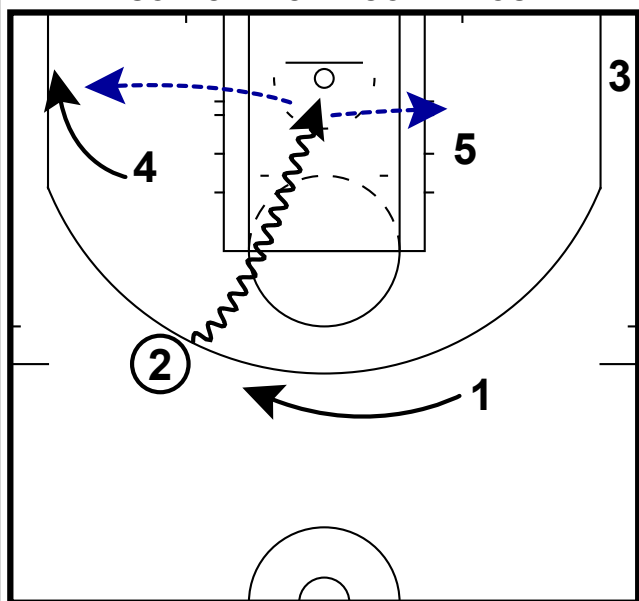
- 1) Here is a SOB that Brad Stevens drew up for the Celtics ran near the end of the game vs. the Portland Trail Blazers.
- 2) This set starts much like many other SOB with the guards on the baseline and the post players at the elbows.
- 3) This one is different because 5 sets a diagonal screen rather a down screen for 1.

SOB: CELTIC DIAGONAL DOUBLE



- 1) Here with both post players along the baseline, they were able to set a double stagger screen for the guard along the baseline.
- 2) This could be a good opportunity for a jumper if solid screens or set.
- 3) However, an option that could be there is if x4 extends the screen - 4 could be open on a slip.

SOB: CELTIC DIAGONAL DOUBLE



- 1) In fact what happened in this game is that Jamal Crawford took the ball quickly to the lane.
- 2) This can be effective if you have a 4 player that make a 2nd cut to the arc and hit a jumper.
- 3) Or perhaps if x5 slides over, this will open up a look for 5 on the backside.