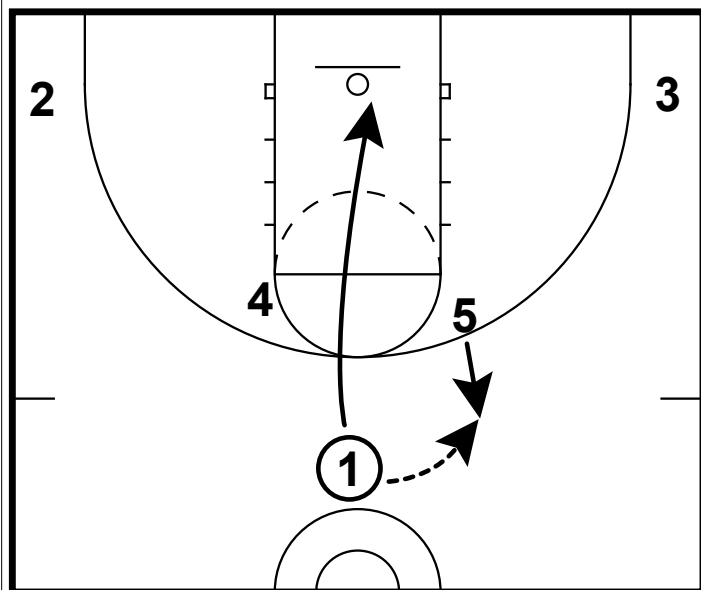
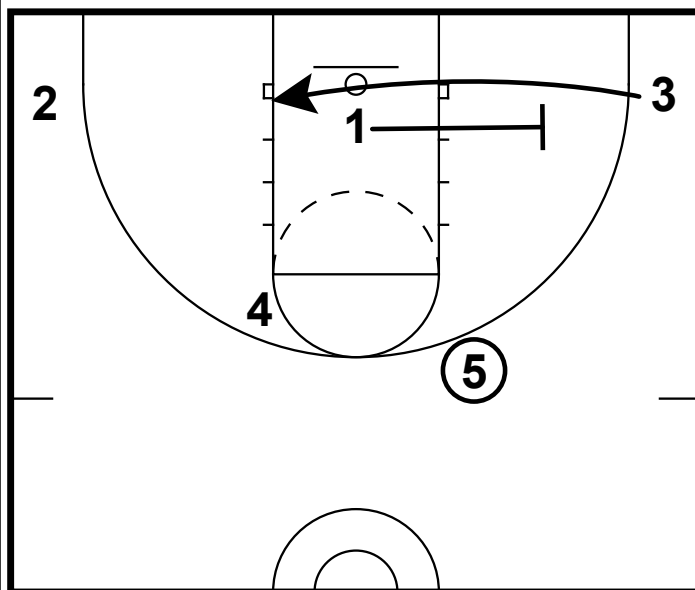


TYLER DORSEY: HORNS/FLEX/HANDOFF



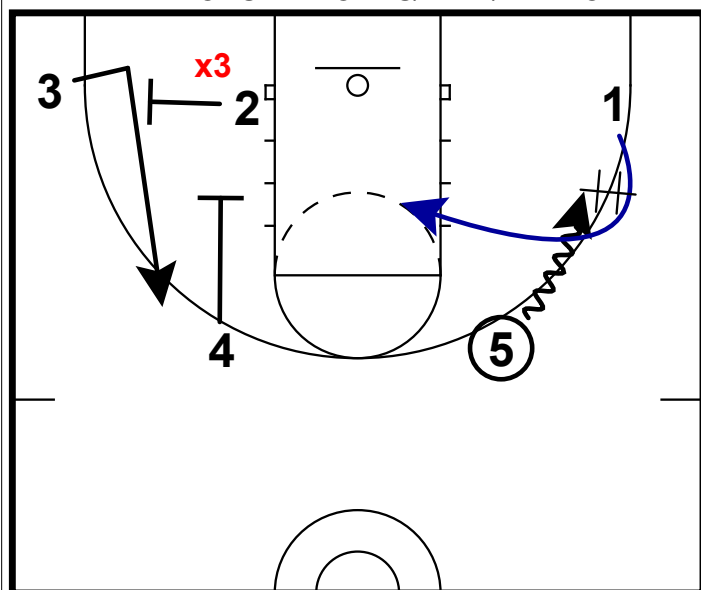
- 1) **Tyler Dorsey** is scoring lead guard in the mold of Austin Rivers. He is a kid that can get his shot off at virtually any moment.
- 2) In this set, as the pg he will bring the ball down and deliver the ball to a post at the arc - out of the horns set.
- 3) He will immediately make a basket cut, which puts extraordinary pressure on the defense. He is a threat to score off of this cut because ball savvy that he possesses.

TYLER DORSEY: HORNS/FLEX/HANDOFF



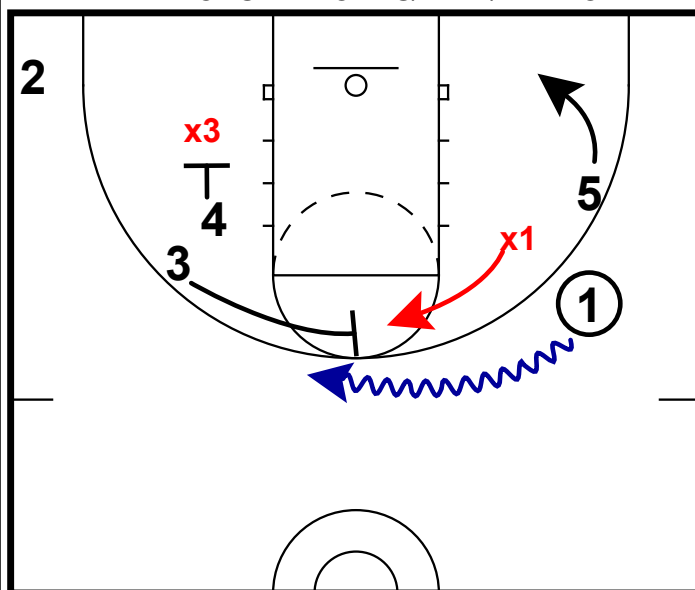
- 1) Something to consider when it comes to utilizing a good scorer is to set screens with him - in this set, Dorsey will set a cross screen on the baseline for a perimeter player.
- 2) This creates pressure on the defense because it is hard to help off of **Dorsey** and switching may create mismatch.
- 3) Having a versatile post who can pass is preferable here. Another option is to invert your posts and guards in this set.

TYLER DORSEY: HORNS/FLEX/HANDOFF



- 1) Once **Dorsey** sets the baseline, we have created a 2 man game look on this side of the floor.
- 2) Having the player drive the ball directly at **Dorsey** puts the defense in a tough situation. **Dorsey** is quick & smart enough to back cut an over play from the defense.
- 3) Getting a dribble hand-off here while setting screens away from the ball opens the middle of the floor up.

TYLER DORSEY: HORNS/FLEX/HANDOFF



- 1) If by chance x1 has fought through the dribble handoff - there is another opportunity to get **Dorsey** a shot.
- 2) Coming off his weak hand, he will receive a screen from 3 who had just received a down screen from 4.
- 3) This prevents the a great opportunity for **Dorsey** to shoot the ball from behind the arc without a defender jumping out to hedge the screen.