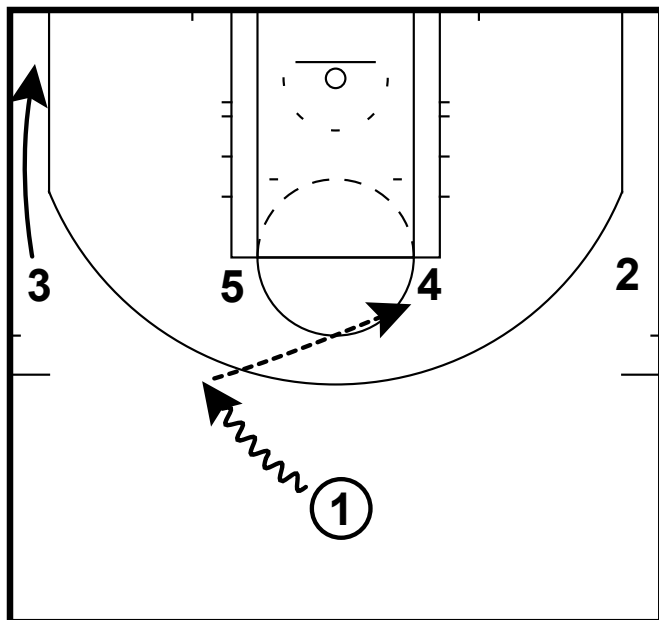
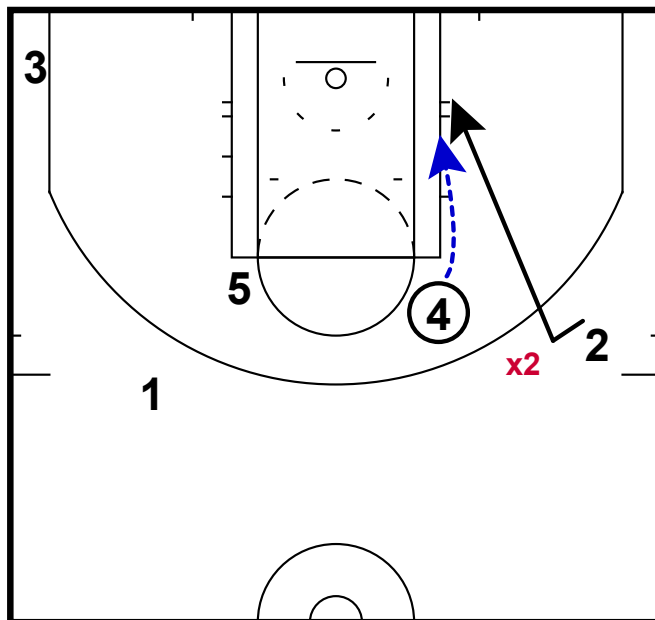


HALF-COURT: PHX 2 MAN BACKDOOR



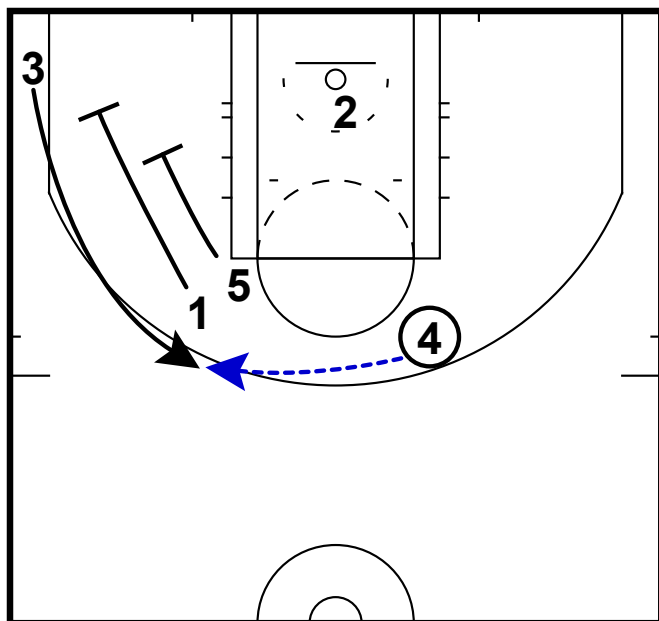
- 1) Phoenix is a hot team in the NBA this year. They find a way to score a lot of points & they have several play-makers.
- 2) This was a 2 man game set that they ran out of 1-4 high set, which provides multiple options.

HALF-COURT: PHX 2 MAN BACKDOOR



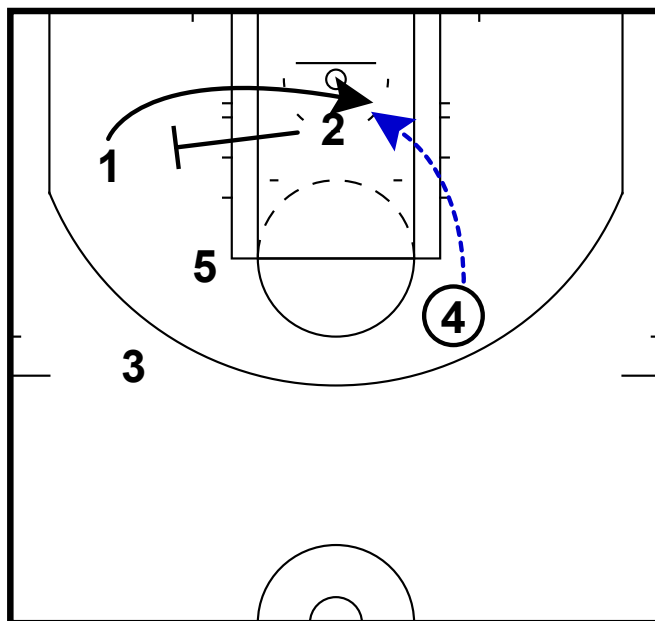
- 1) With the ball dribbled towards the left lane line & entered to the high post at the elbow.
- 2) 2 takes a step towards the 4 man as if to come off of a handoff. If x2 jumps to take a way the handoff, a backdoor cut will be open. Especially with the help cleared out.

HALF-COURT: PHX 2 MAN BACKDOOR



- 1) If the backdoor cut is not open, this sets up an easy double screen for your best shooter who slid to the corner.
- 2) Getting your point guard inside prevents an easy guard to guard switch.

HALF-COURT: PHX 2 MAN BACKDOOR



- 1) The third action/option here is good when the defense has prepared for the first two.
- 2) A cross inside the lane for the point guard will be effective, especially when the defense has stretched to take away the 3pt shot.