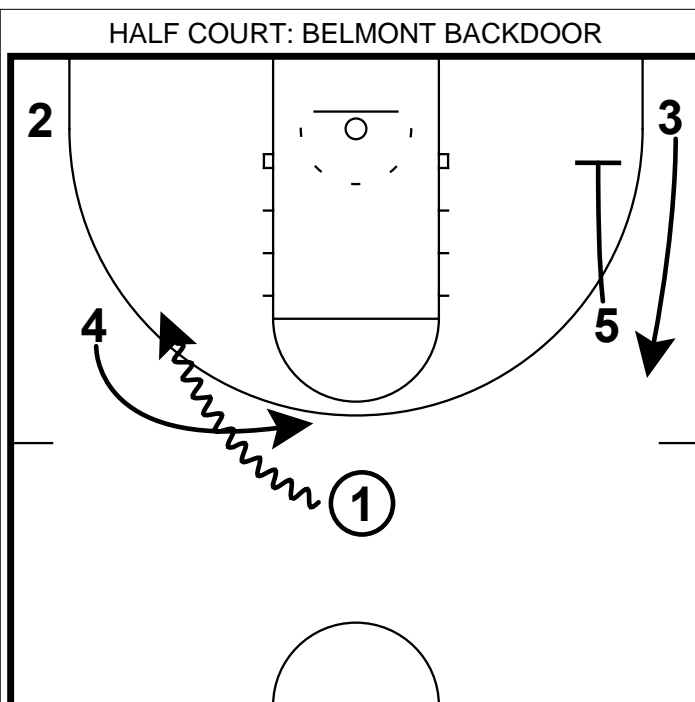
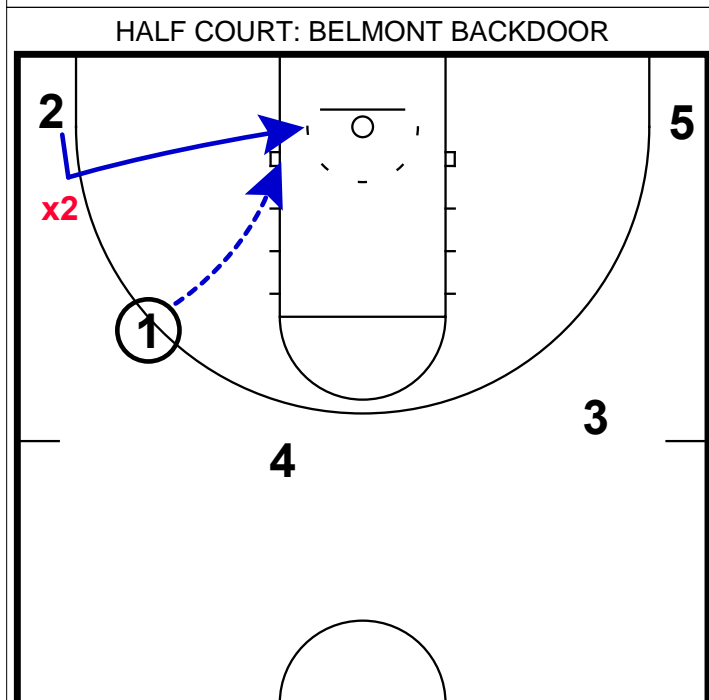


- 1) This is a backdoor set that I picked up from **Rick Byrd's Belmont Bruins** in an early season match-up vs. Eastern Kentucky.
- 2) Belmont went open post & had the PG attack hard at one wing.
- 3) Belmont is known for putting 4-5 shooters on the floor, so going "5-wide" here is not unusual for them.



- 1) Here the point guard dribbles hard at the wing & the 4 man here comes on top of the pg as if to get a hand-off.
 - 2) Away from the ball, there is down screen action to occupy the helpside.
- Coaching Note:** Running a hand-off here & then throwing back to your best shooter coming off of a down screen would be nice alternate set.



- 1) Now with the fake hand-off having occurred - 2 takes a step towards 1 just to get **x2** to anticipate a hand-off.
- 2) Once **x2** moves towards the ball, 2 makes a back door cut for the easy lay-up.