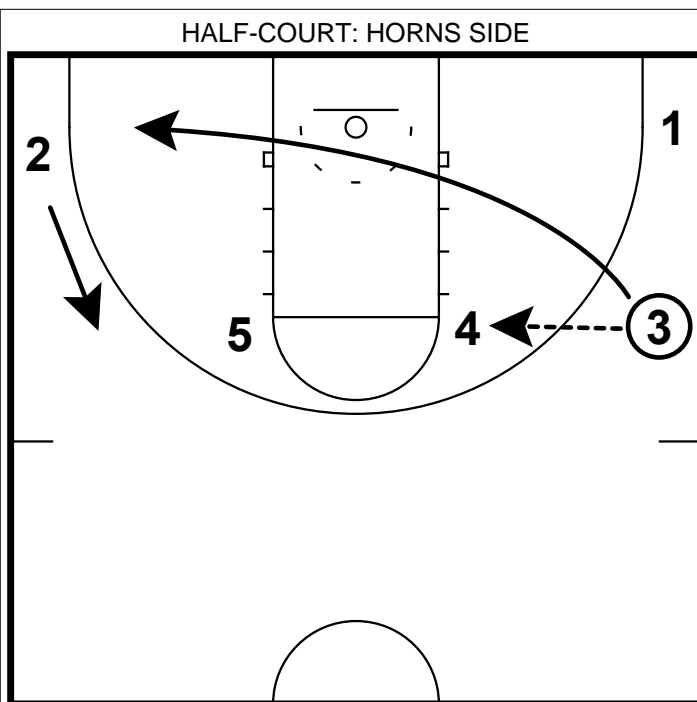
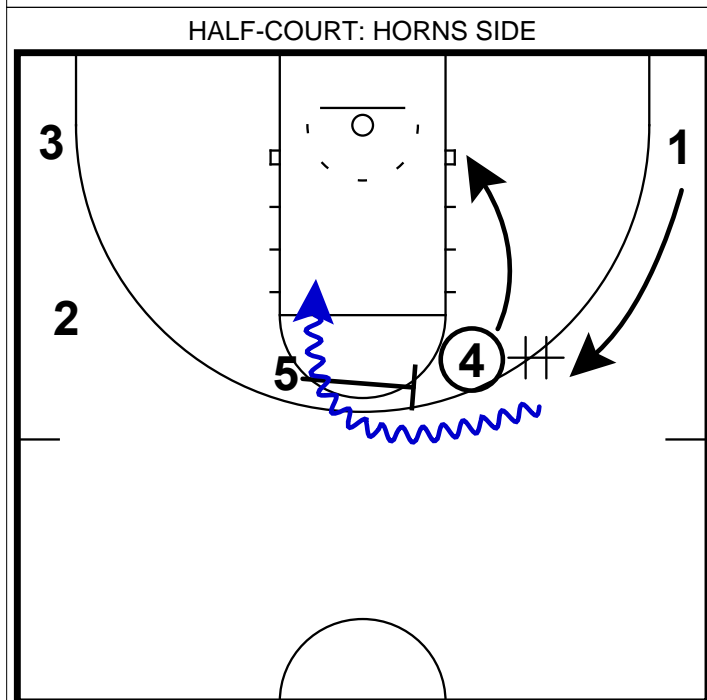


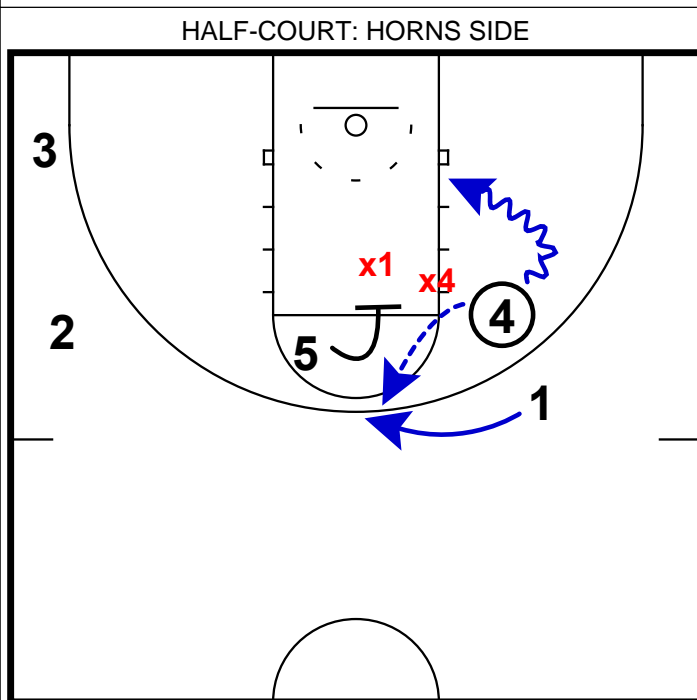
- 1) This "Horns" set starts with a pass to the wing & immediate corner cut by the PG.
- 2) The post can easily set a back screen here as well.



- 1) The idea here is to get the ball back to your point guard in the corner.
- 2) One way to do this is to enter the ball back to the 4 player at the elbow. Now 3 will make an immediate through cut to the opposite corner.
- 3) **Coaching Point:** Always be ready for the defensive adjustment. One adjustment to be made is to get a backdoor cut immediately back to 3 on the back cut.



- 1) In this frame, the point guard will execute a "give and handoff" situation by throwing to the 4 and then receiving an immediate handoff.
- 2) As soon as the handoff occurs, 5 will come with an immediate ball screen to confuse the defense in the case of a switch. Notice that 4 will make an immediate roll to the bucket.
- 3) **Coaching Point:** In the case of a trap in frame 2, 3 can certainly enter the ball to 4 and then run the handoff to 1 as planned.



- 1) In this frame we demonstrate what could happen assuming the defense wanted to play underneath all of the action.
- 2) 5 would look to screen the defense into the lane and this would open 1 up for an open 3pt shot. Another option off of this action is if x4 cheats too much to the middle of the floor, 4 will have an easy fake hand-off and finish.
- 3) Personnel is everything right here. Having the IQ on the court to make this adjustment on the fly is critical. Also having a pg who can knock down the open 3 is tantamount.