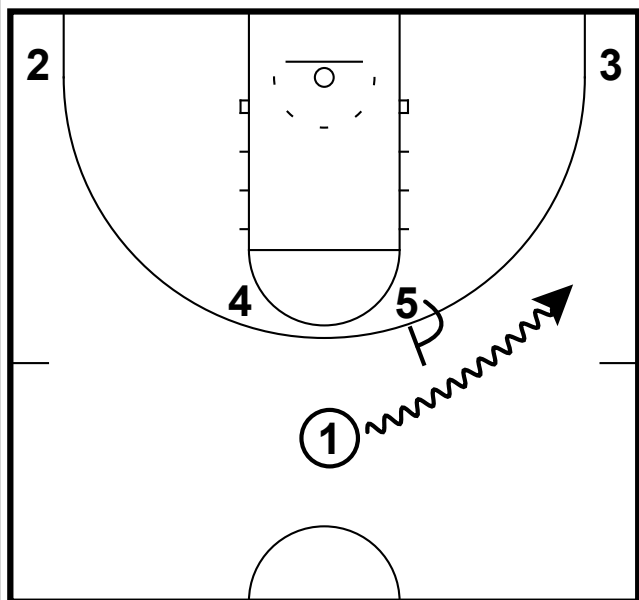
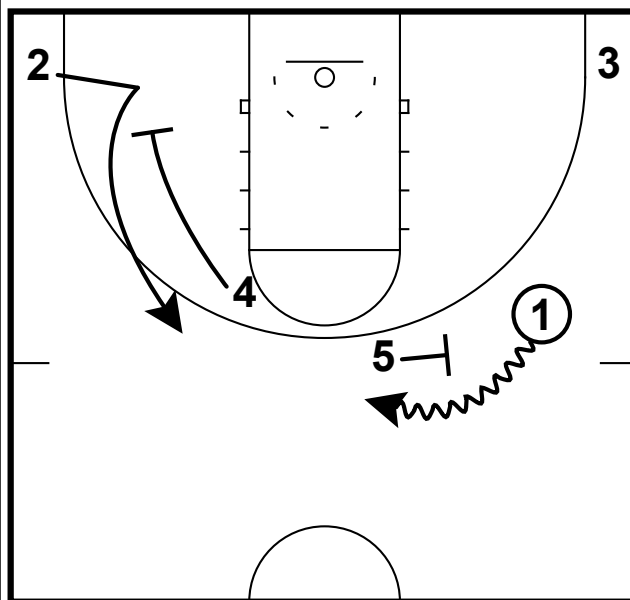


HALF-COURT: IZZO HORNS 2 MAN GAME



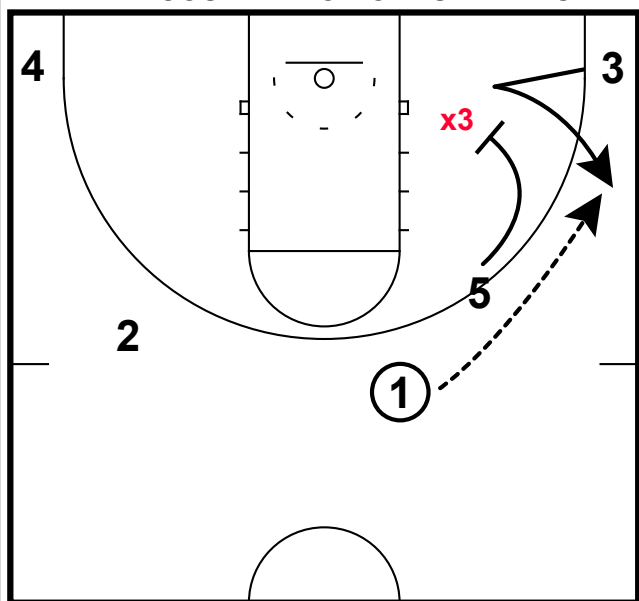
- 1) Michigan State used the Horns set as a way to get into a motion type of offense, which really means that they got their ball scorers in scoring positions.
- 2) The offense is initiated with the point guard using a ball screen from the post player.

HALF-COURT: IZZO HORNS 2 MAN GAME



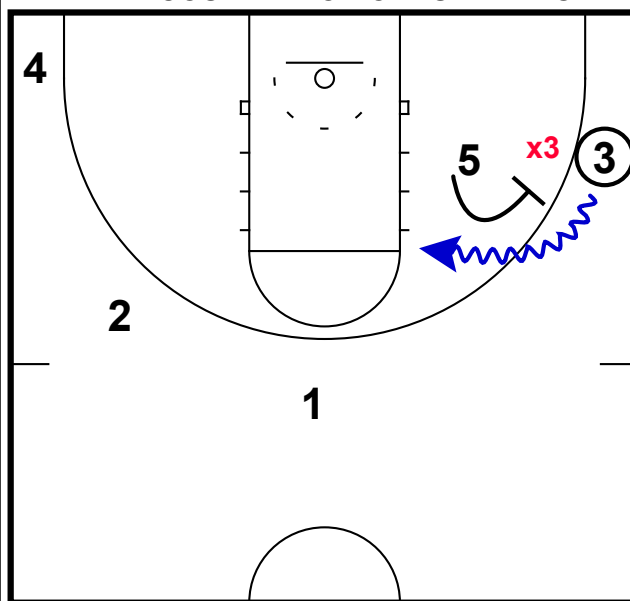
- 1) The point guard immediately turns back and gets a re-screen from the same post player.
- 2) Meanwhile, away from the ball the opposite post player down screens for the opposite wing.

HALF-COURT: IZZO HORNS 2 MAN GAME



- 1) As soon as the 5 man sets that 2nd ball screen, he turned & set a down screen for the ball side wing.
- 2) In this case, the defense **x3** had jumped to the ball so the SG in this spot makes a fade cut to the arc.
- 3) Of course if the defense had played it differently it would have required a different cut.

HALF-COURT: IZZO HORNS 2 MAN GAME



- 1) In this frame we see that the guard for the Spartans immediately went into a 2 man game, which turned into a pull-up jumper.
- 2) Interestingly, the post player had set 4 screens in this half-court set which led to a jumper.