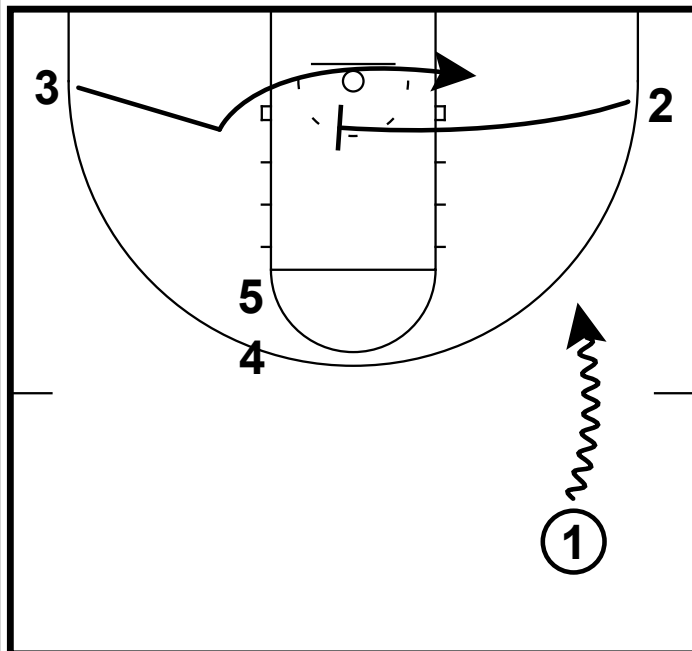
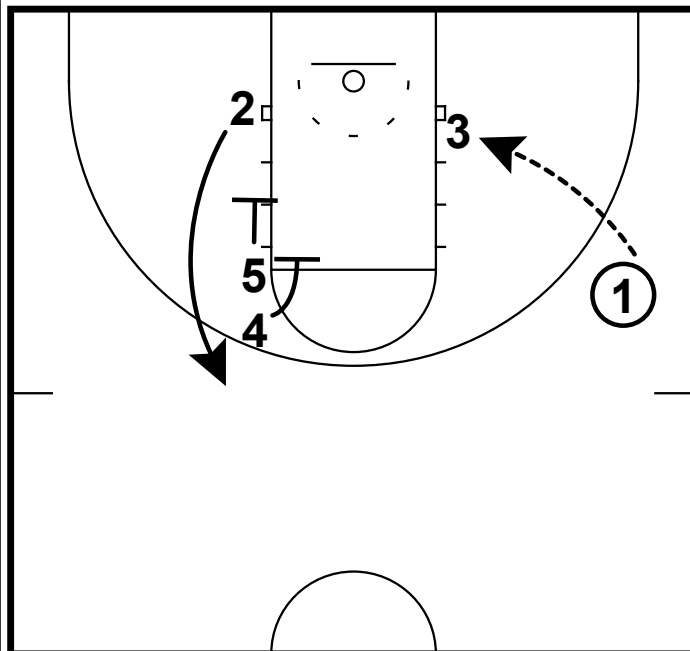


HALF COURT: KY PREMIER SCREEN THE SCREENER



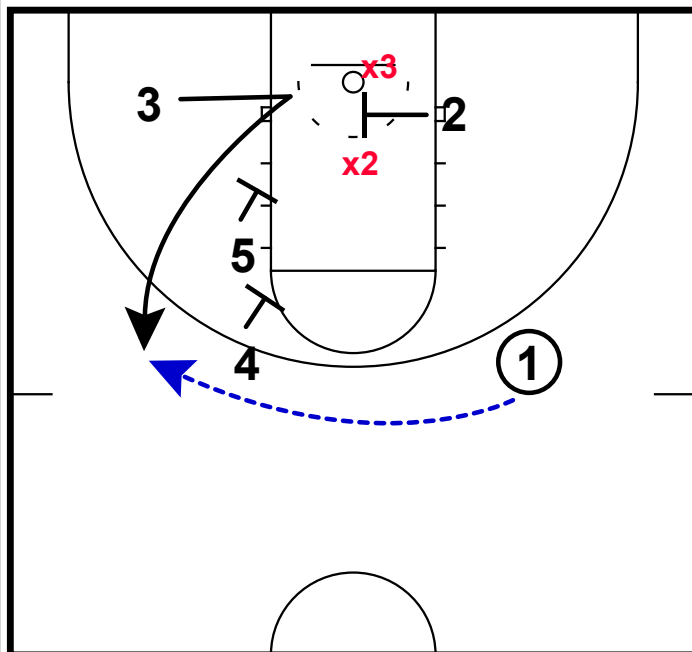
- 1) This set utilizes the basic principle of screen the screener. However, the posts are off-set at the opposite elbow.
- 2) The action starts with the two wings exchanging in a screening action as the pg brings the ball across the timeline.

HALF COURT: KY PREMIER SCREEN THE SCREENER



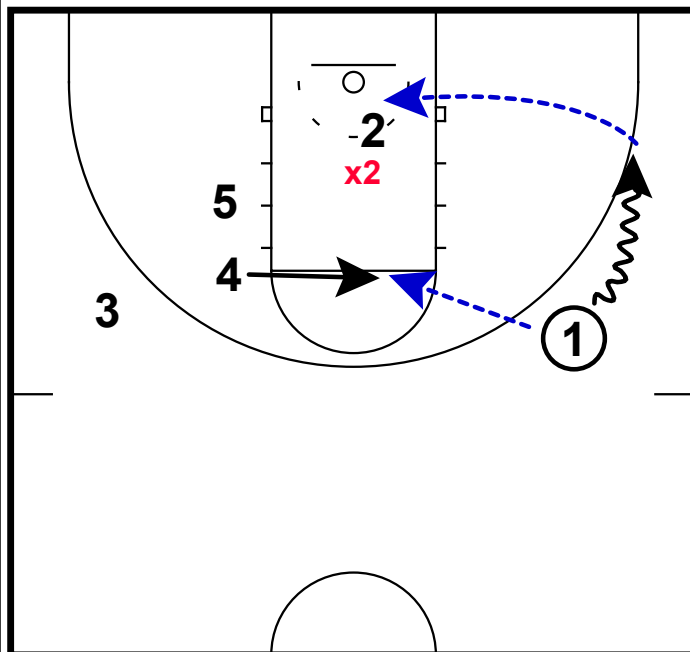
- 1) If you have a big wing that can score with his/her back to the basket, this is a perfect chance for the pg to feed 3 on the block.
- 2) While 2 now comes off of a double down screen from the opposite posts.

HALF COURT: KY PREMIER SCREEN THE SCREENER



- 1) This frame shows the read that should occur if the defense begins to jump the cross screen.
- 2) A versatile wing here will be able to fade the cut out to the arc for a jumper.

HALF COURT: KY PREMIER SCREEN THE SCREENER



- 1) Another look that you will be able to get is to dribble down & feed 2 on the block - this option will be there when the defense begins to anticipate the original action of 2 coming off the double screen.
- 2) Also a slip from 4 at the FT line will be available, especially if **x4** either switches the down screen or sags in on 2.