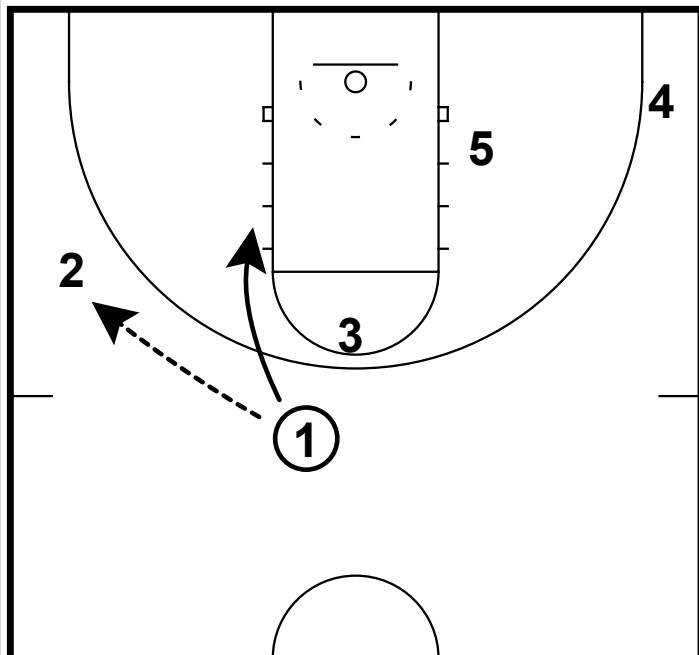
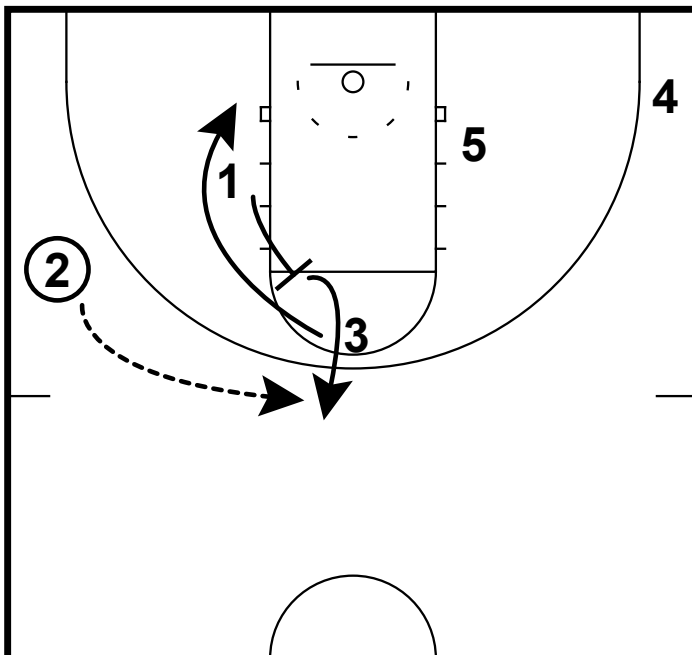


OHIO STATE PIN-IN FOR SHOOTER



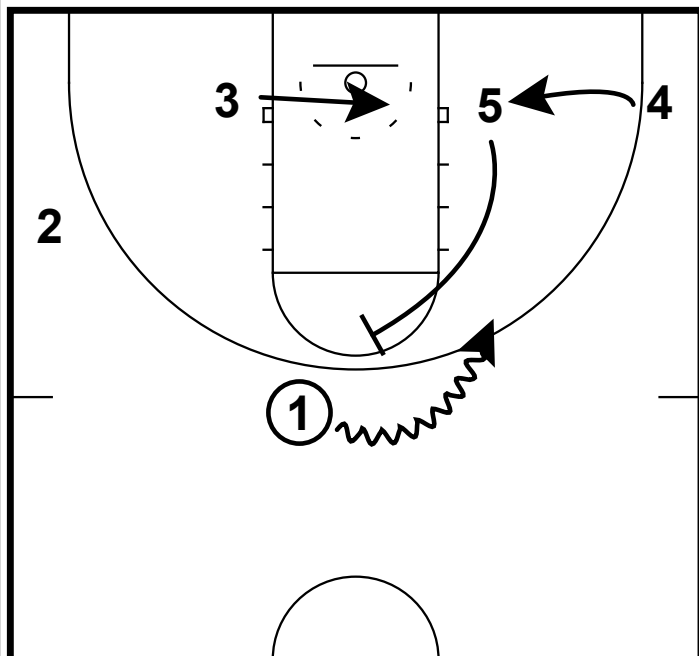
- 1) Entry to the pass to the wing from the point guard.
- 2) Put your best shooter near the top of the key and both post players away. (You can stack your post players on the opposite block if need be.)

OHIO STATE PIN-IN FOR SHOOTER



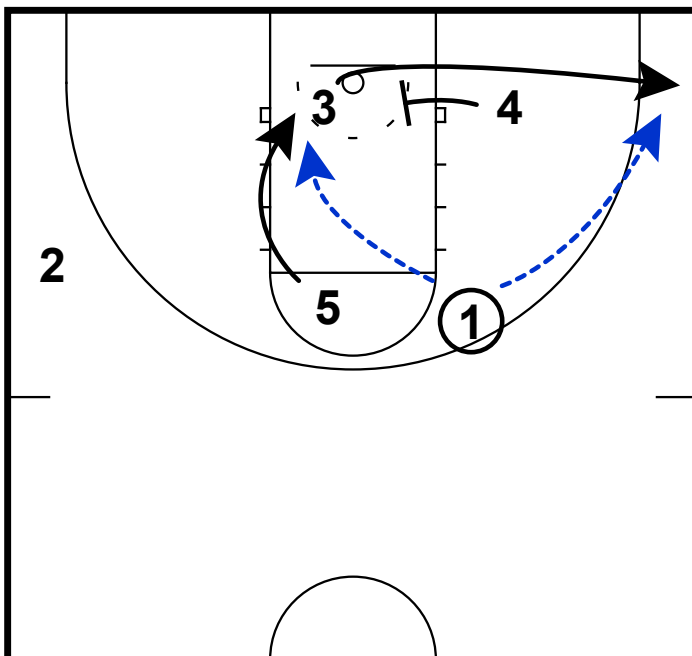
- 1) The point guard will pass and cut to the lane line area and the set a back screen for your best shooter.
- 2) Once 1 sets the back screen he/she should 2nd cut to the top of the key area.

OHIO STATE PIN-IN FOR SHOOTER



- 1) With 1 with the ball at the top of the key, 5 comes and sets a ball screen at the top of the key.
- 2) 4 will move into position to set a pin in screen along the baseline.

OHIO STATE PIN-IN FOR SHOOTER



- 1) 4 sets the pin in screen on the baseline for your best shooter.
- 2) 1 can look for the shooter on the baseline or look for 5 slipping to the bucket on the weakside.
- 3) **Teaching Point:** The ball screen at the top of the key should be hard to trap because of the back screen set earlier in the set. If 5's defender tries to hedge hard it will create an easy slip for 5 on the weakside.