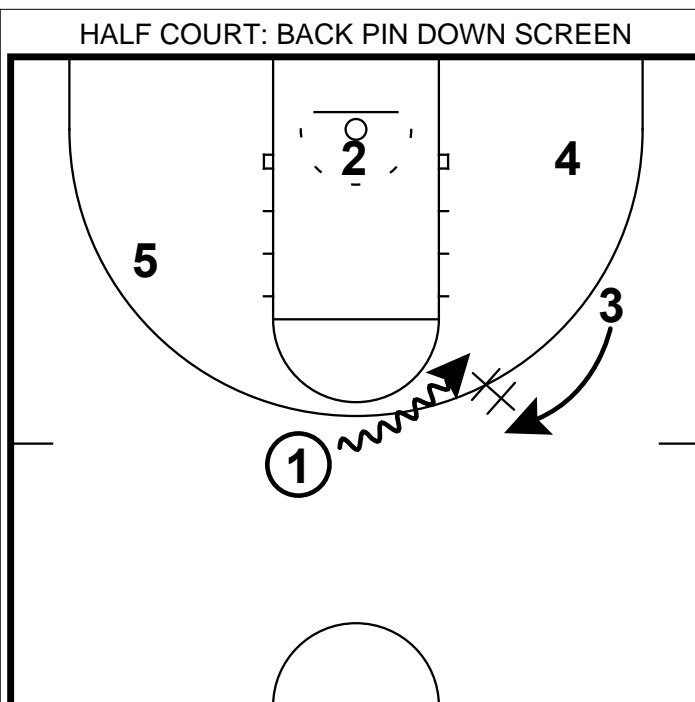
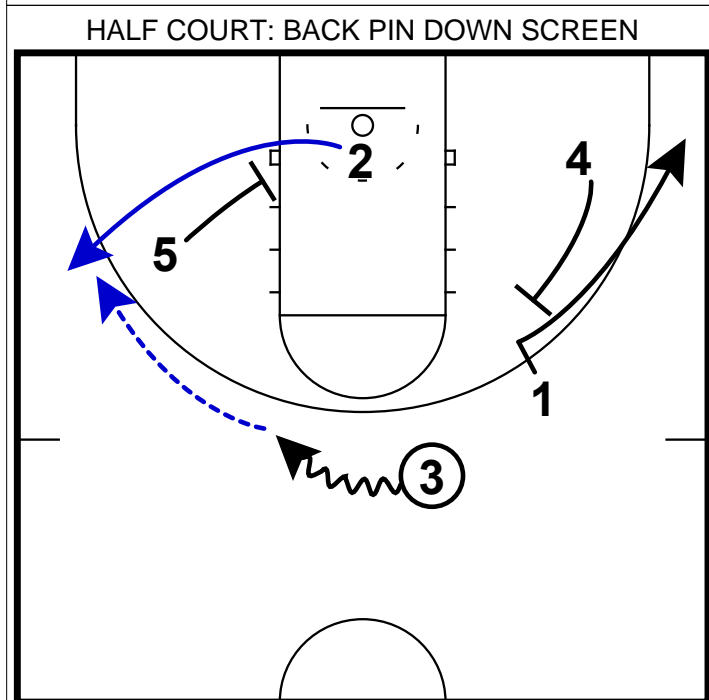


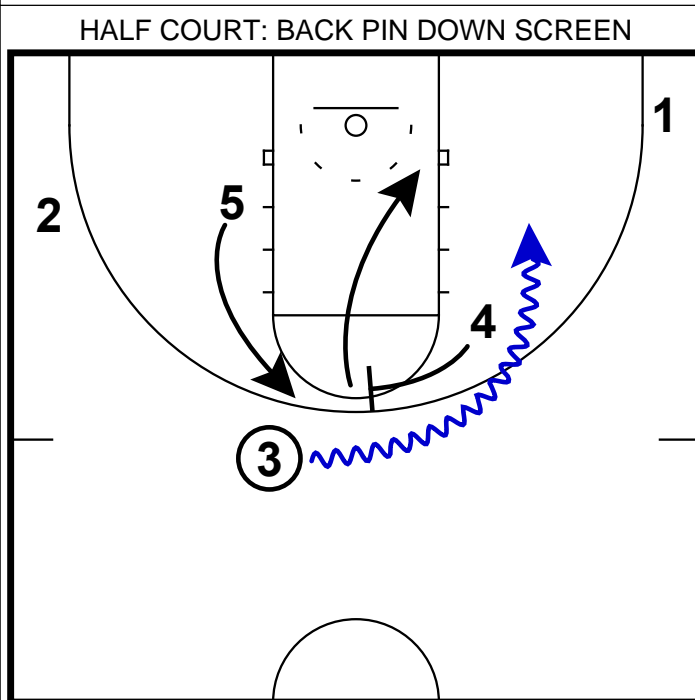
- 1) The 4 around 1 offense can be effective for spacing, however what should be taught more often is the screen & rescreen.
- 2) Here in this set we see a back screen being set by the ball side post & a down screen opposite.
- 3) Coaching Point: Put your best shooter at the "2" spot, your best driver at the 3.



- 1) After 3 comes off the down screen, the PG will drive hard at the opposite elbow to set up a dribble hand-off.
- 2) Also 2 will need to put his/her head under the basket to set up the next cut. This forces the defense to stay honest.



- 1) Now with your best driver in the middle of the floor, the defense has to be aware of the drive & protect the lane.
- 2) This is a perfect opportunity to "Pin-In" your shooter with the ball coming back towards him/her.
- 3) Notice what is happening away from the ball side action. The PG has come off of a flare screen & has spaced to the corner.



- 1) The alternate action to get off of this in case your shooter can't get a shot off the pin-in is for 4 to immediately chase down the PG w/ a ball screen.
- 2) 3 will need to cross over, spin, etc. to change direction. Now he/she can turn the corner for a drive, kick out or look at the roll action from 4.