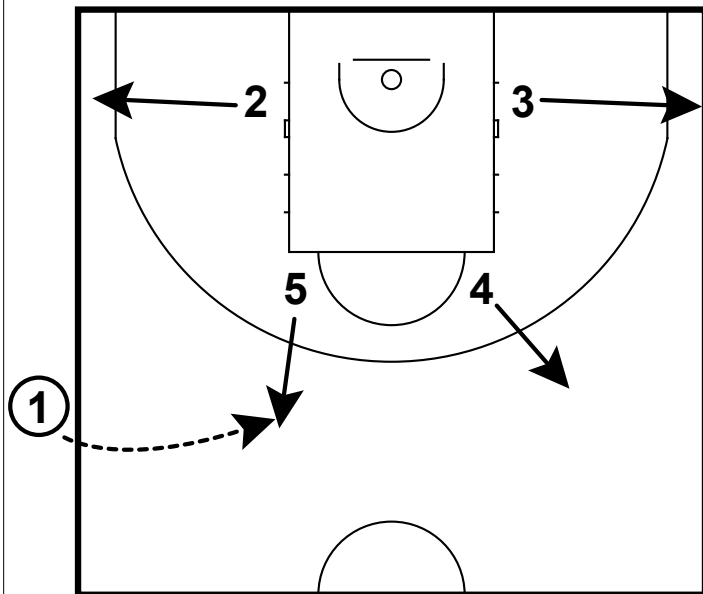
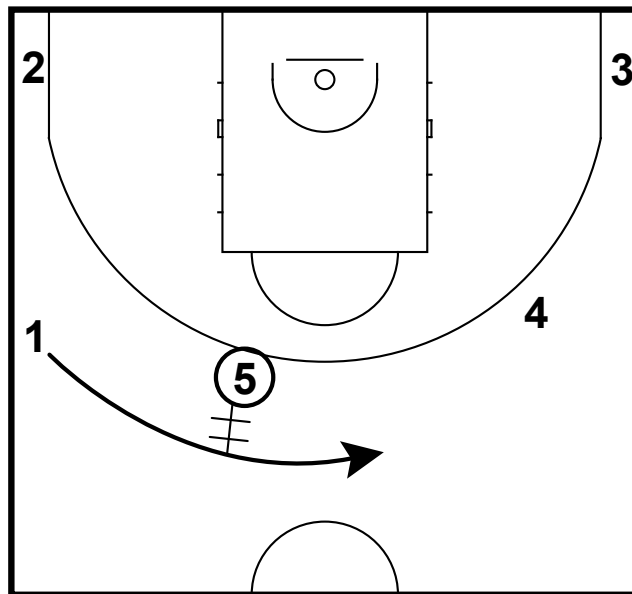


SOB: EUROLEAGUE HAND-OFF BALLSCREEN



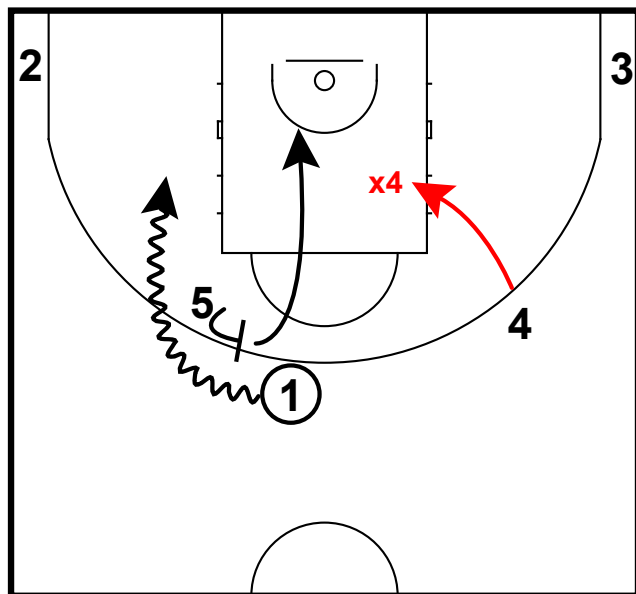
- 1) Here is a Euro-league side-line out of bounds out of box set.
- 2) This is good when the defense is expecting a screen & instead the post player cuts out & to catch a pass. Also the other players will break to the arc which will open up the lane.

SOB: EUROLEAGUE HAND-OFF BALLSCREEN



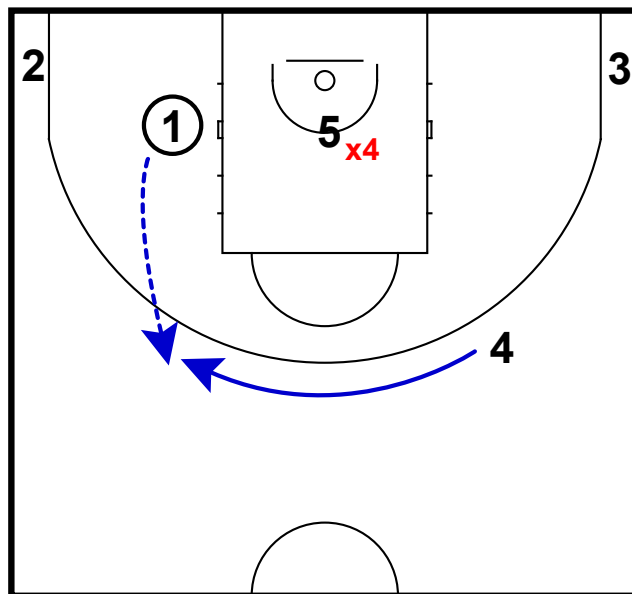
- 1) Once the ball is inbounded, the point guard will immediately follow the pass for a hand-off.

SOB: EUROLEAGUE HAND-OFF BALLSCREEN



- 1) Here instead of trying to turn the corner, the point guard turns right back around & receives a ball screen from the post.
- 2) Here the pg tried to turn the corner & 5 rolled hard to the rim.

SOB: EUROLEAGUE HAND-OFF BALLSCREEN



- 1) However with x4 helping on the roll, the pg was able to throw back to 4 on the perimeter.
- 2) This is a classic "European" cut where the perimeter shooter fills in behind the driver for a shot.