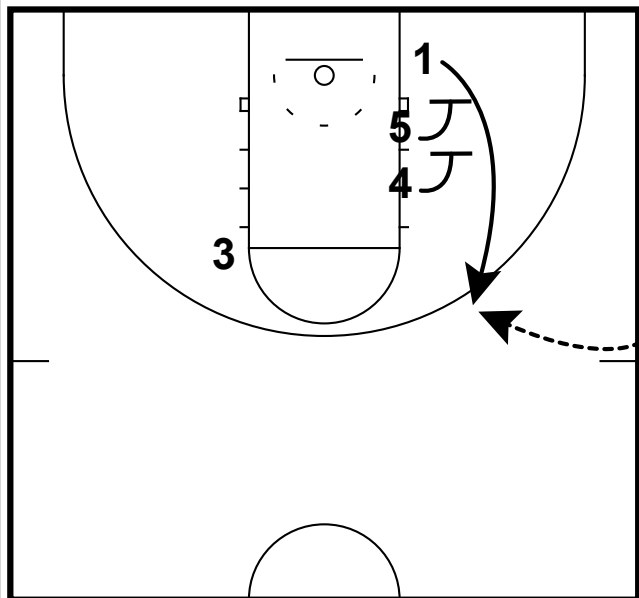
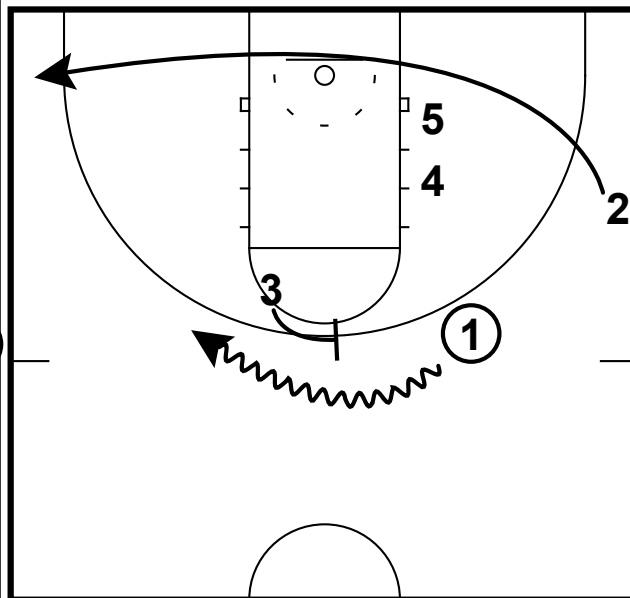


SOB: MICHIGAN STATE DOUBLE FLARE



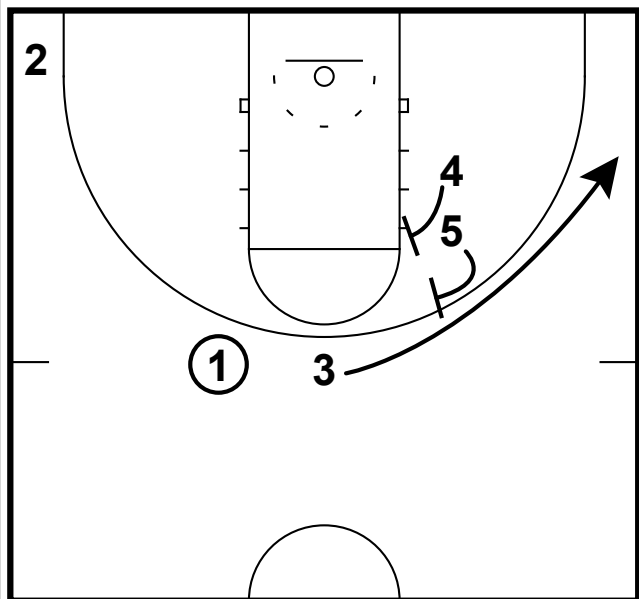
- 1) The Spartans were down 3 with about :10 left in the game. Tom Izzo calls timeout to set up this SOB.
- 2) The PG comes off 2 screens to catch at the top of the key.

SOB: MICHIGAN STATE DOUBLE FLARE



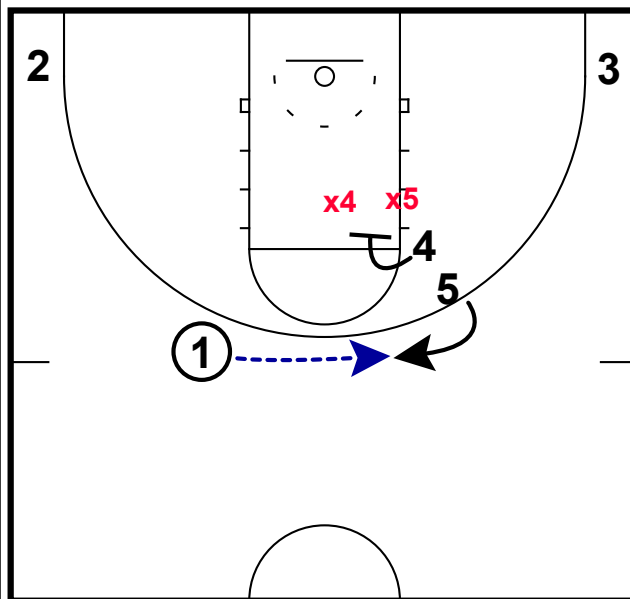
- 1) The pg immediately receives a ball screen from the best shooter on the floor.
- 2) While the inbounder clears to the other corner.

SOB: MICHIGAN STATE DOUBLE FLARE



- 1) Wisconsin who anticipated the shooter to get the shot, locked up on him at the top of the key to prevent the pick-n-pop.
- 2) However, the Spartans then run him off of a double flare screen.

SOB: MICHIGAN STATE DOUBLE FLARE



- 1) The Badgers played the shooter perfectly as to not allow him to get a shot off the flare.
- 2) However, Izzo had now drawn up an option for his post player who can hit the 3 to knock this down this top of the key 3 to tie the game with under :05 left.