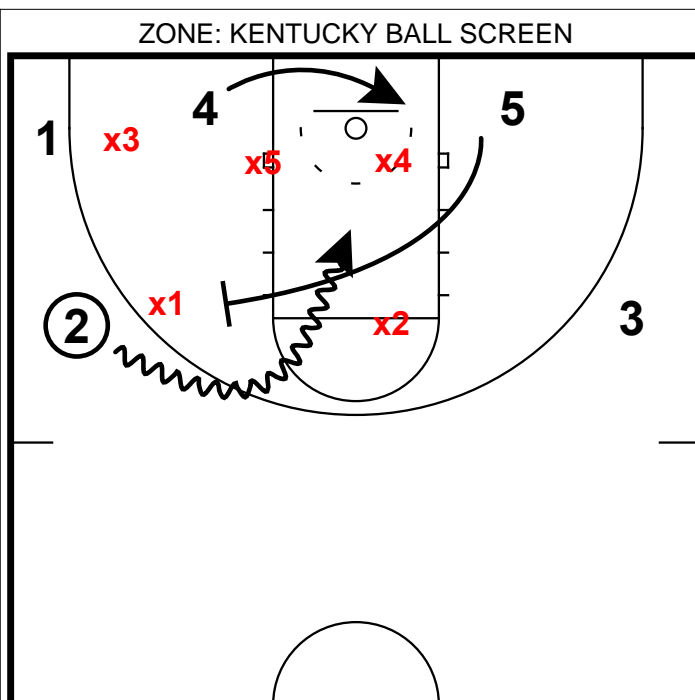
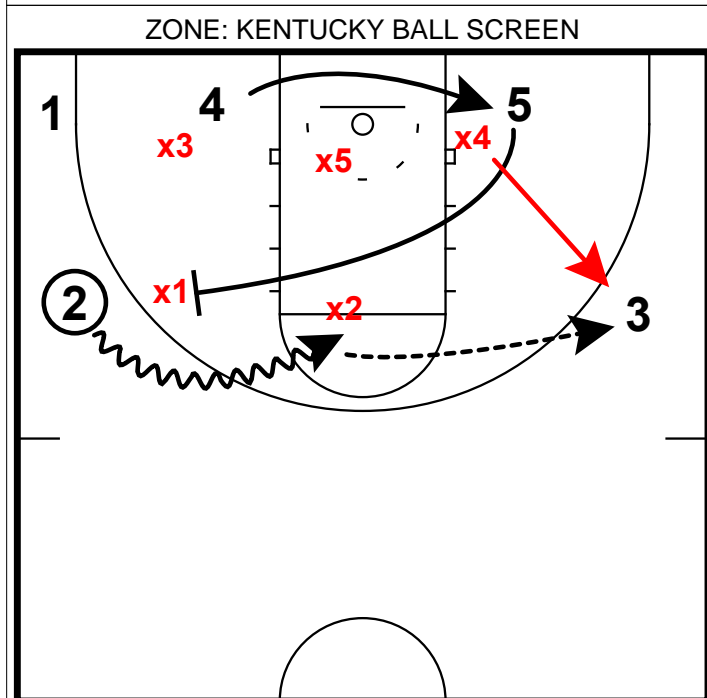


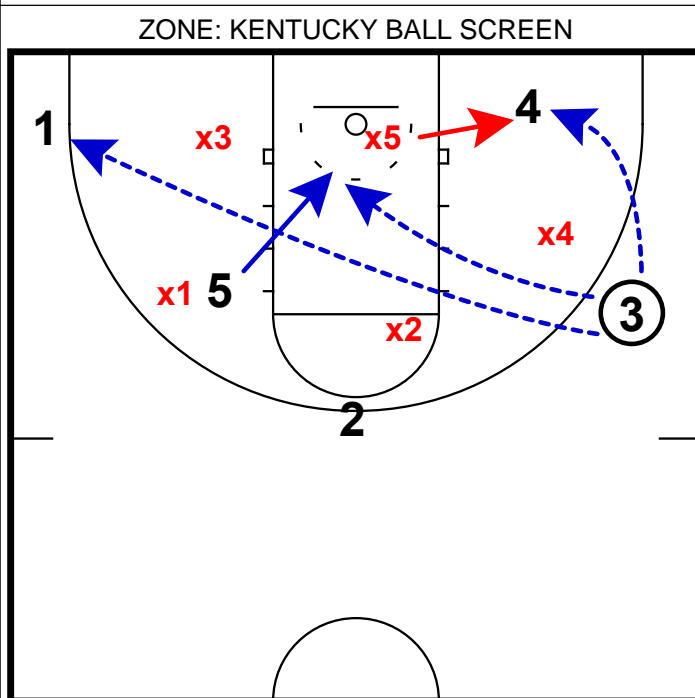
- 1) Here is a 3 out 2 in ball screen quick hitter vs. a 2-3.
- 2) The PG should pass to the wing and make an immediate corner cut.



- 1) With the ball on the wing, the opposite post player should come and set an inside screen on the defender guarding the ball.
- 2) The wing needs to look to split the defender and look to be able to finish in the paint. The other post player looks to find the open spot block to block for the dump off.
- 3) **Coaching Point:** Your best driver should have the ball on the wing. Your best shooter should be opposite of the ball for the kick out on the drive.



- 1) Eventually the defense will make the adjustment and slide x2 in the middle of the lane.
- 2) When this happens, 2 needs to make the read to reverse the ball to 3. If he has space, he should knock down this shot.



- 1) If x4 closes out quickly on 3 to the point where he/she cannot get the shot off - he has 2 options now for attacking passes.
- 2) 4 needs to have followed the ball to the short corner and that becomes a nice open jumper.
- 3) Or 5 slipping off of the ballscreen in the middle of the lane becomes open if x5 slides too hard to cover 4 in the corner.