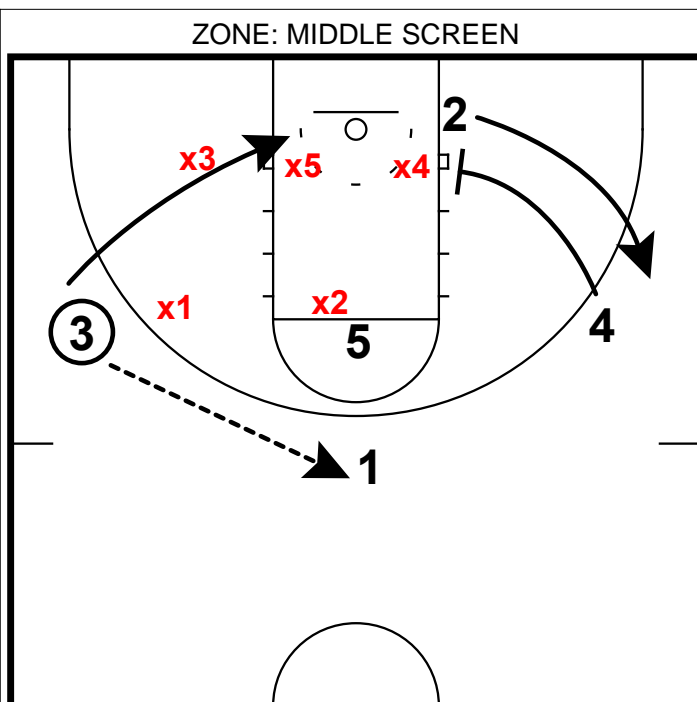
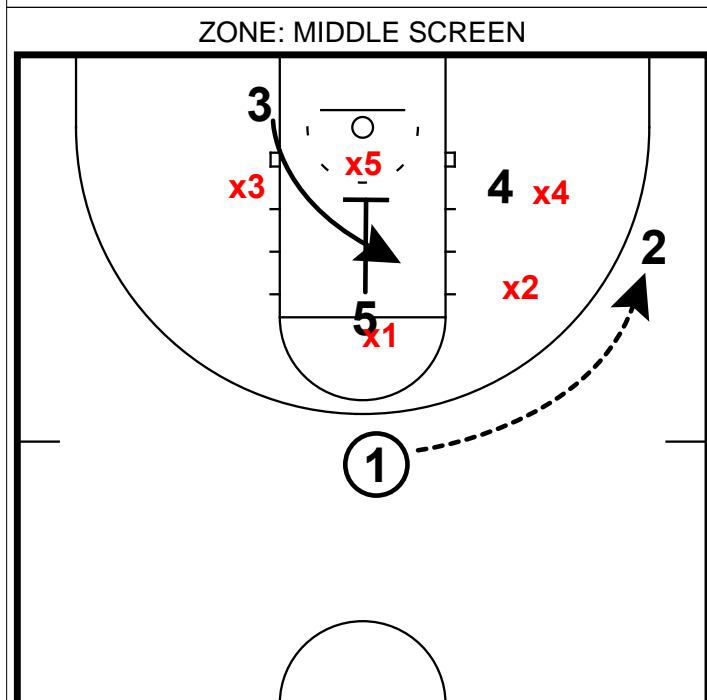


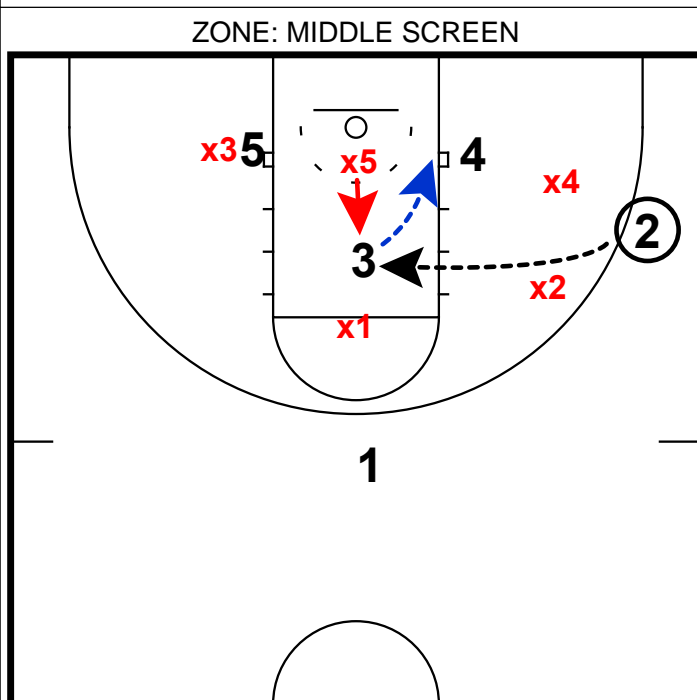
- 1) In this 3 out 2 in set, you would put your best post player at the free throw line & your best shooter along the baseline.
- 2) The ball will be thrown the wing, however the shooter will away from the ball on this action.



- 1) When the ball is reversed back to the top of the key, the shooter will come off a pin-in screen from 4.
- 2) Now 3 will replace 2 along the baseline.



- 1) Now the post player will screen the middle man of the zone on the reversal pass to the wing.
- 2) This should open up a gap in the lane.



- 1) 3 may have a shot here in the lane.
- 2) However, 5 & 4 may have the ability to seal on the block for an easy layup if 5 cheats up.