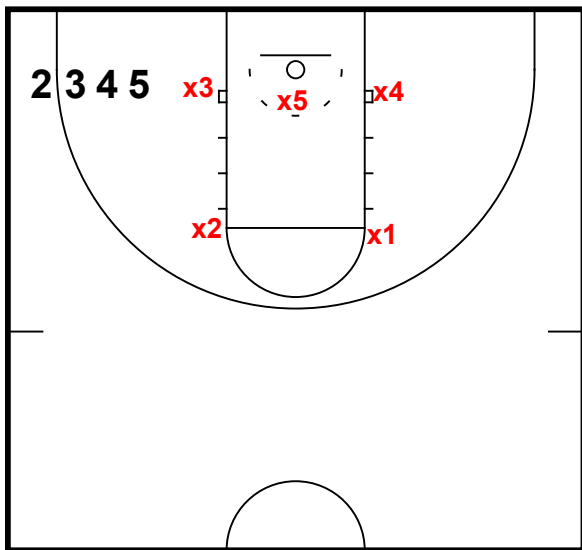


BOB: BASELINE AWAY

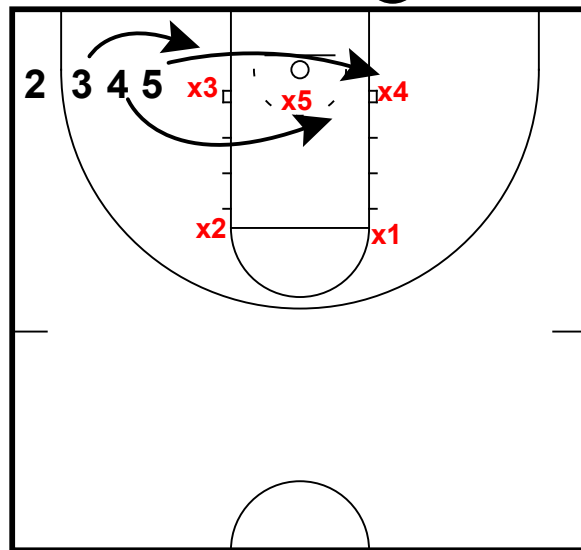
①



- 1) Line up all 4 of you players in the opposite corner.
- 2) Make sure your best shooter is at the back of the line.

BOB: BASELINE AWAY

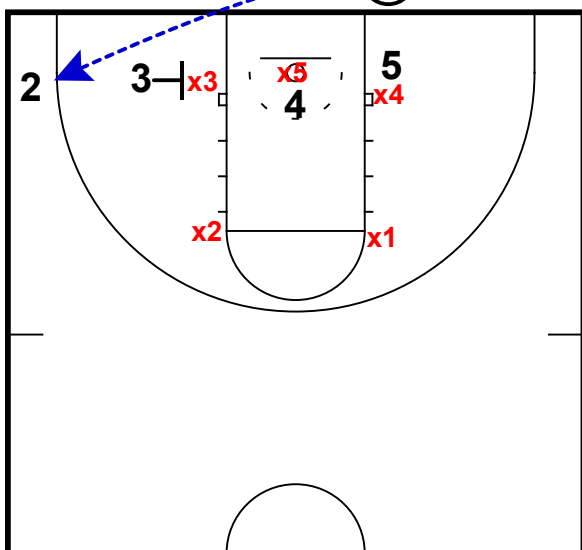
①



- 1) When the ball is inbounded, 5,4,3 all simultaneously move toward the middle of the lane.
- 2) They are looking to occupy the bottom half of the zone.

BOB: BASELINE AWAY

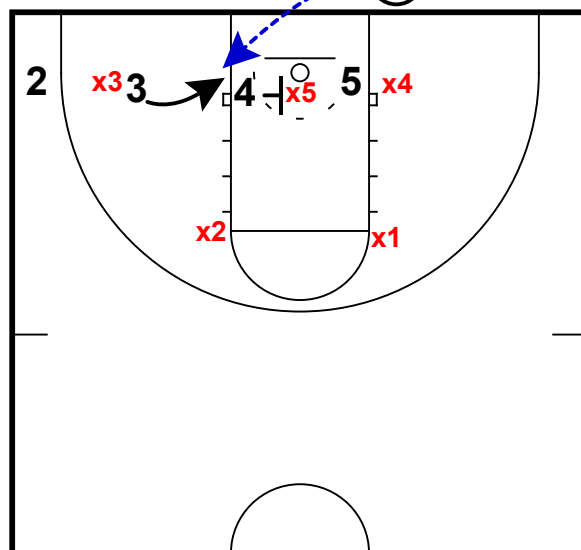
①



- 1) With all the attention given to the cutter in the lane, 2 will be wide open in the corner for a 3.
- 2) **Coaching Point:** This play will probably only work for a 3 once per game. Then you may want to adjust what you are looking for in a late game situation. Perhaps look for a slip, lob or screen.

BOB: BASELINE AWAY

①



- 1) Another look that you could get is the slip for 3 on the block if x3 slips to the corner.
- 2) At this point, 4 would need to screen the middle man.