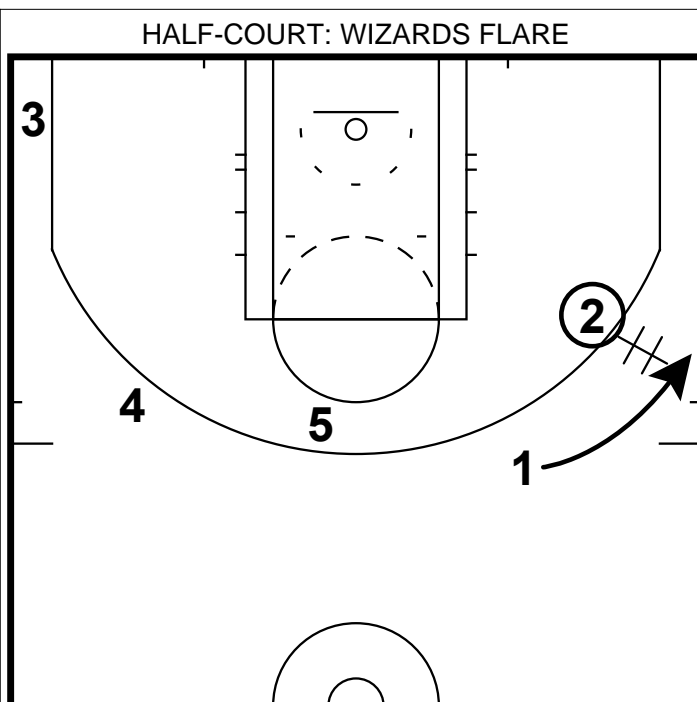
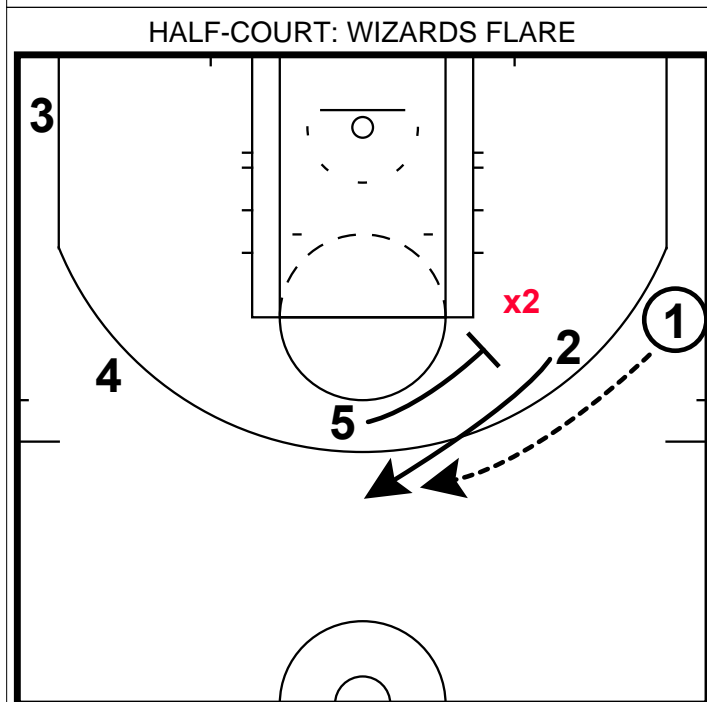


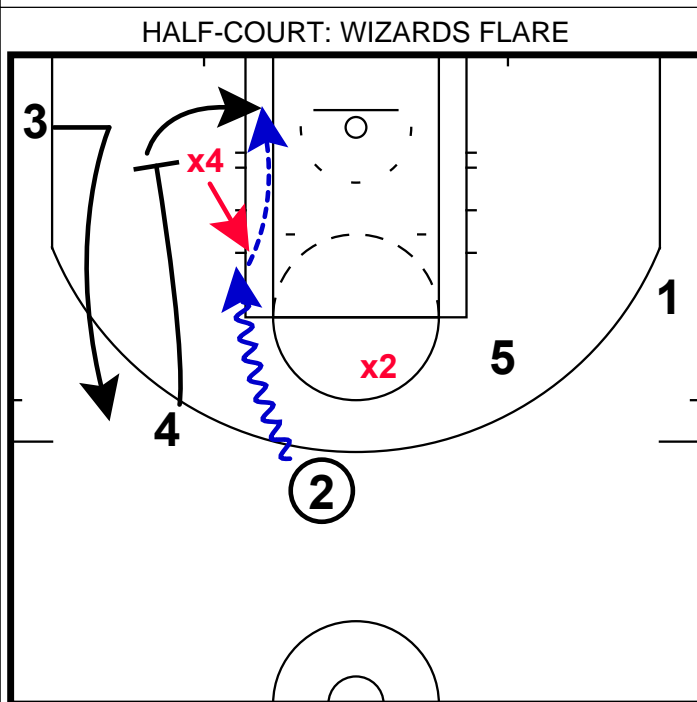
- 1) The Wizards have had a solid year this far in 2013-2014 being over .500 after the All-Star game.
- 2) Here is a set that they used w/ an empty post set.
- 3) John Wall dribbles towards the wing w/ both posts opposite of him.



- 1) The wing immediately gives the ball back to Wall with a hand-off.



- 1) In this game **x2** gets out of position & is screened effectively by 5 on a flare screen.
- 2) This creates an opening, which could have been a jumper.



- 1) Instead of shooting the jumper here, the guard drove the ball.
- 2) Because of the action on the weakside with the 4 man setting the down screen - this created a seam in the lane.
- 3) Here **x4** helped up the lane & created an easy dump off for a dunk.