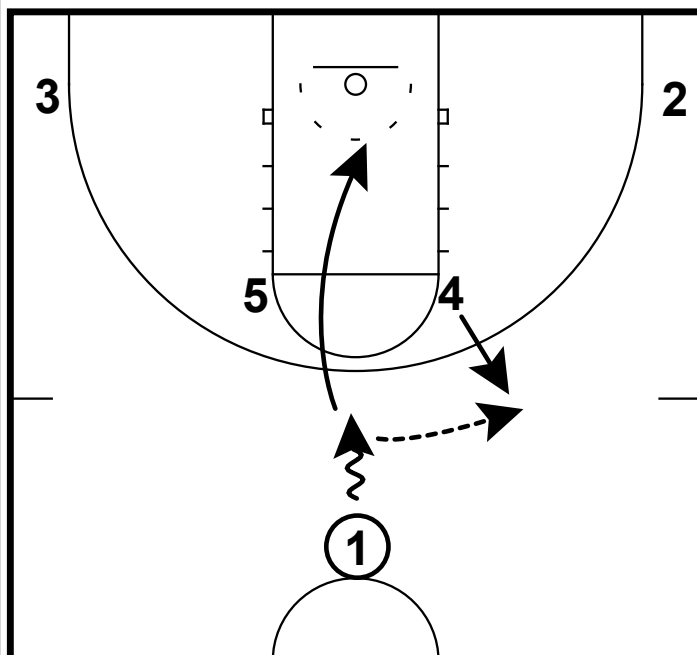
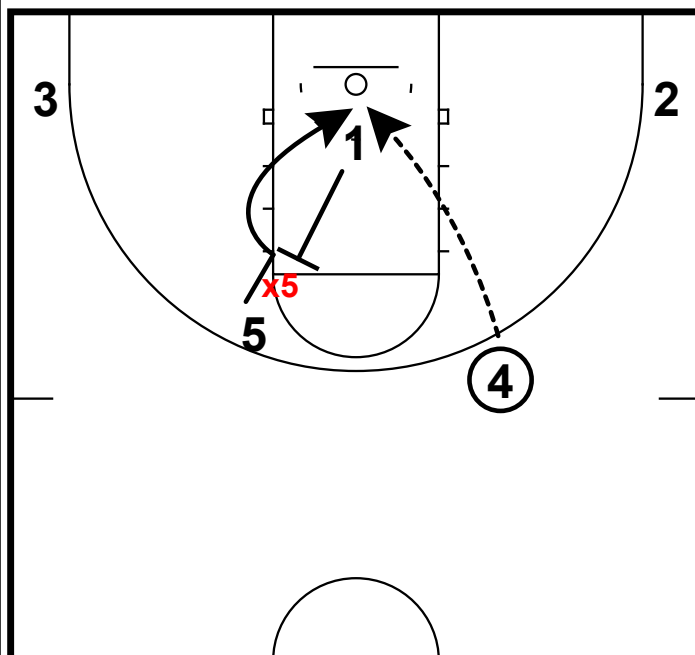


HALF COURT: HORNS BACK / FLARE SCREEN



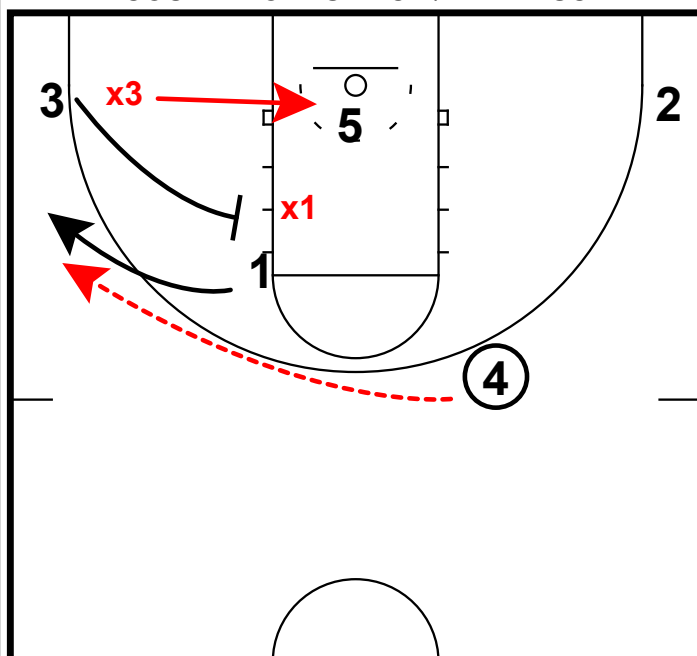
- 1) Patberg is a 2015 prospect who has already committed to the University of Notre Dame. She is a point guard who distribute & pass it.
- 2) In this "Horns" set, Patberg will play the point and make a post entry to 4 just outside the arc. After the pass, she will make an immediate basket cut to the rim.

HALF COURT: HORNS BACK / FLARE SCREEN



- 1) After the basket cut, Patberg will set a back screen for the opposite post player.
- 2) This is a tough action to guard as Patberg's defender will more than likely be locked into her to prevent her from getting a shot off.

HALF COURT: HORNS BACK / FLARE SCREEN



- 1) If the defense manages to prevent the back screen from occurring, this sets up a perfect opportunity for a flare screen from the other side.
- 2) 3 will come a set a flare screen for Middleton at the elbow and 4 can deliver the pass on target to Patberg for an open 3.