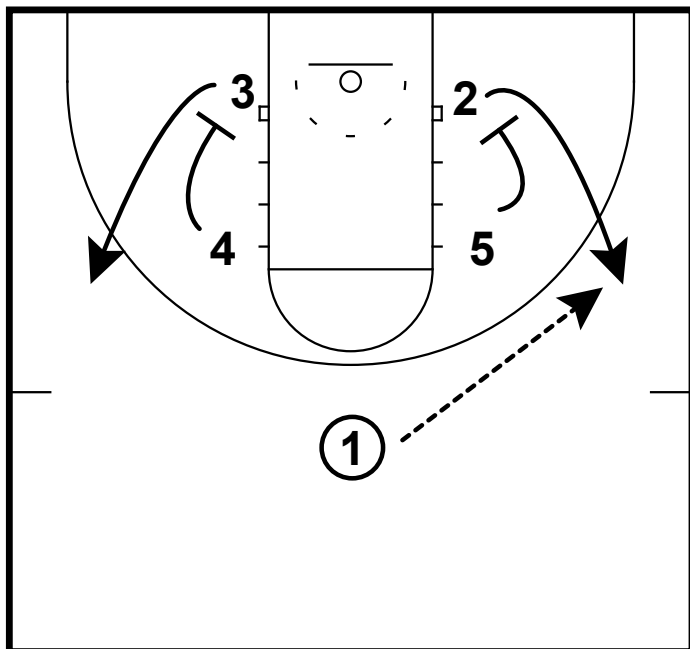
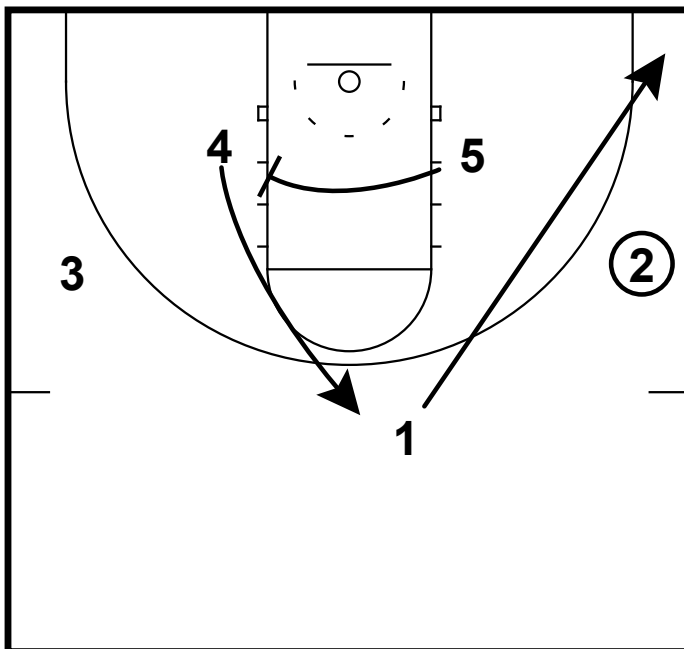


HALF-COURT: KANSAS BOX HI LOW



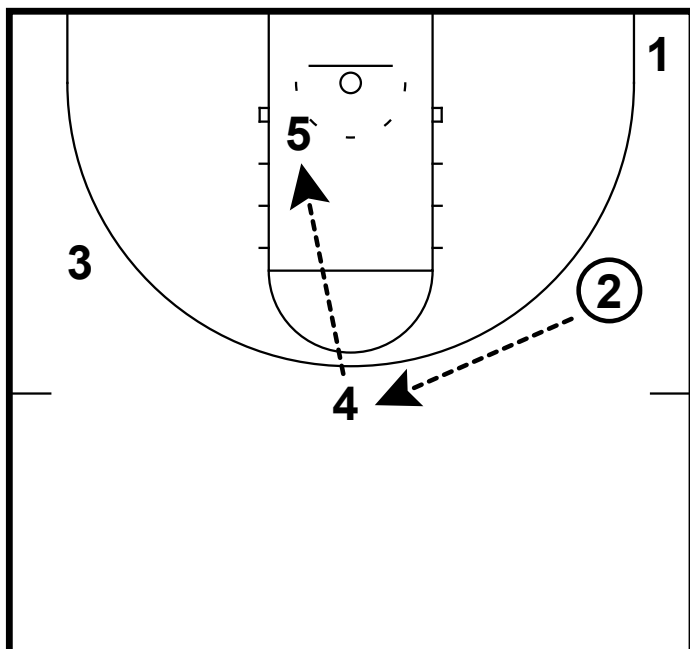
This box set from Kansas is designed to get the 5 man the basketball. They start in a box set. 4 and 5 go screen for the 3 and 2. 1 hits 2 and cuts to the ballside corner.

HALF-COURT: KANSAS BOX HI LOW



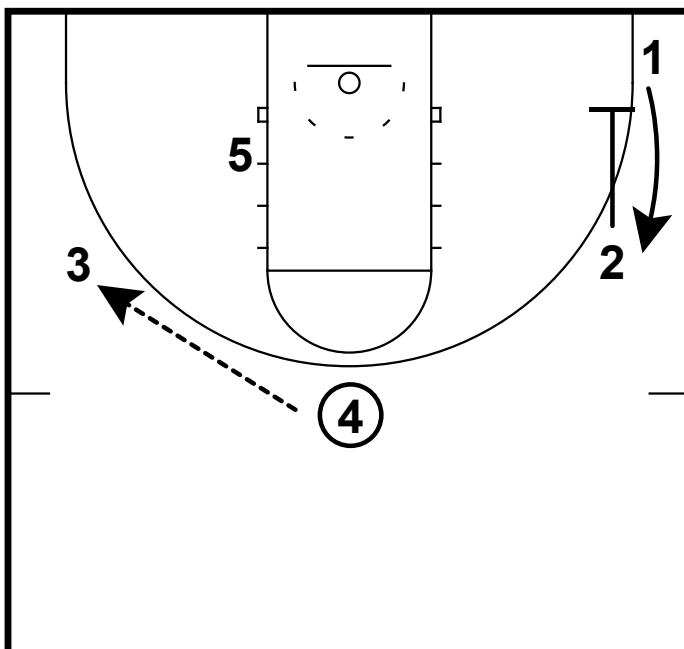
When the 2 gets the ball. The 5 goes and screens for the 4. Notice the angle in which 5 sets the screen. This gives the 4 a better angle to cut to the top and also gives the 5 space to slip the screen if that is open.

HALF-COURT: KANSAS BOX HI LOW



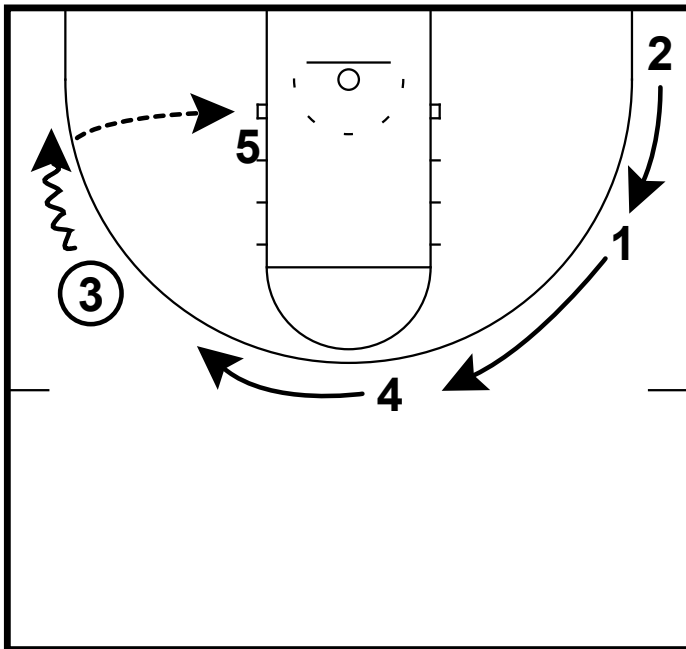
The 2 will reverse the ball up top to the 4. 5 seals his man and looks for hi low from the 4.

HALF-COURT: KANSAS BOX HI LOW



If the 5 is not open. The 4 will then reverse it to the 3 on the left wing. 2 can go screen for 1 to keep the defense moving. If 5 is posting up hard that could open up a curl for the 1 or the 2 could also slip the screen.

### HALF-COURT: KANSAS BOX HI LOW



We have cleared the help by rotating everyone around the perimeter. 3 will dribble down to get a better angle to feed the post.