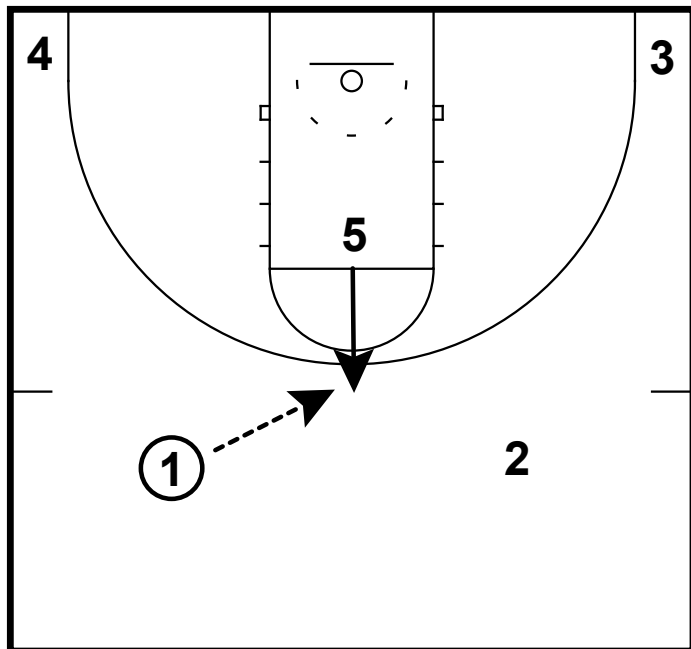
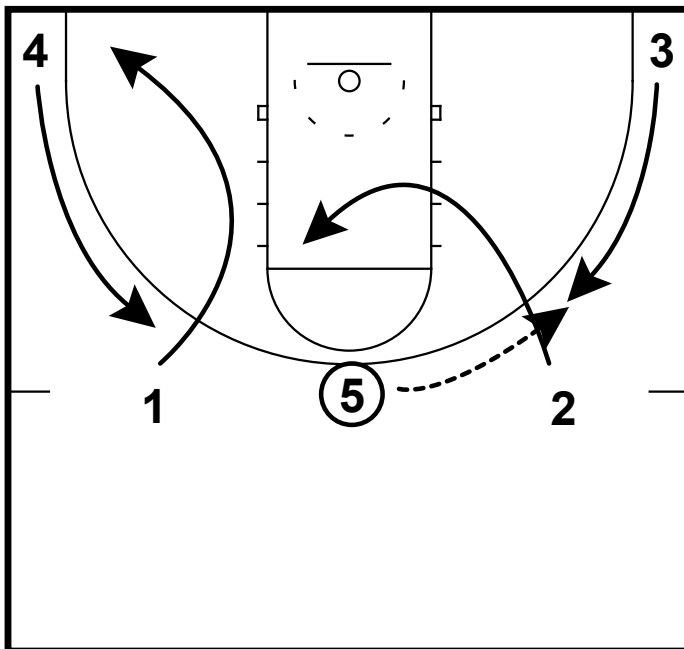


HALF-COURT: MICHIGAN SCREEN THE SCREENER



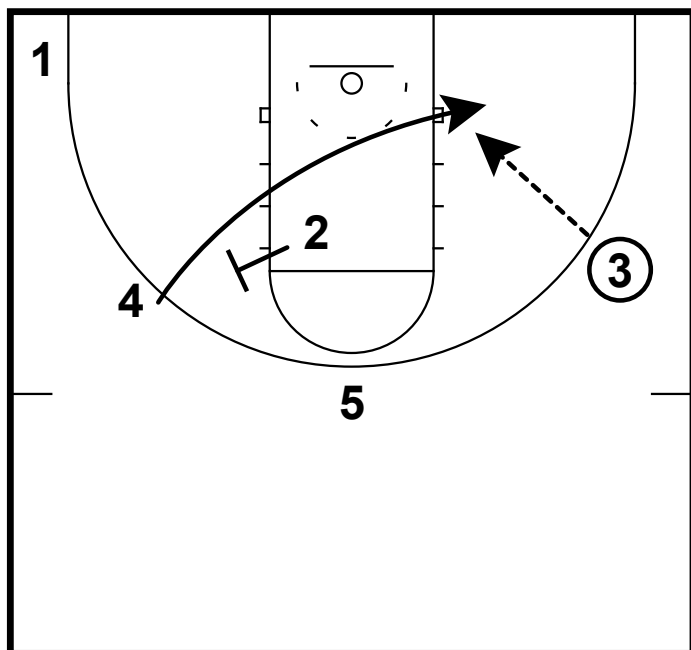
This Michigan 4 around 1 set is very effective when run correctly. 5 starts at the foul line and pops high. 1 passes to the 5.

HALF-COURT: MICHIGAN SCREEN THE SCREENER



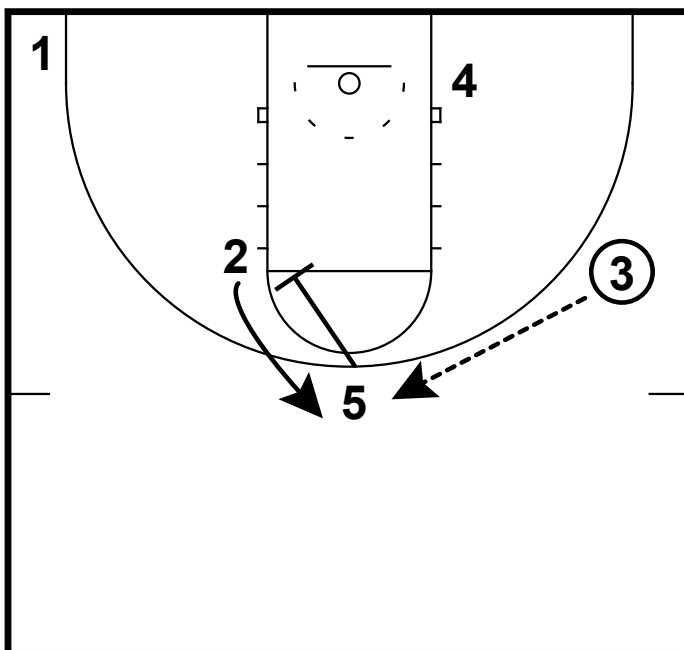
After 1 passes he will look to basket and then fill the corner. 4 will cut up to the wing. 2 will look to basket cut and then move to left elbow area. 3 will cut up to the wing. 5 now reverses the ball to the 3.

HALF-COURT: MICHIGAN SCREEN THE SCREENER



2 will now set a slide screen for the 4. 4 cuts low off the screen looking to get an easy basket off 3's pass.

HALF-COURT: MICHIGAN SCREEN THE SCREENER



If the 4 is not open. The 5 man will now set a screen for 2. 2 is looking to catch and shoot off of the screen.